

## ARG62754 anti-CD18 / LFA1 beta antibody [IVA35]

Package: 100 µg  
Store at: -20°C

### Summary

Product Description	Mouse Monoclonal antibody [IVA35] recognizes CD18 / LFA1 beta
Tested Reactivity	Bov
Tested Application	FACS, ICC/IF, IP
Specificity	The clone IVA35 reacts with CD18 antigen (bovine), a 90-95 kDa type I transmembrane protein (integrin) expressed on all leukocytes.
Host	Mouse
Clonality	Monoclonal
Clone	IVA35
Isotype	IgG1
Target Name	CD18 / LFA1 beta
Immunogen	Bovine leukocytes.
Conjugation	Un-conjugated
Alternate Names	MF17; LAD; CD antigen CD18; MFI7; MAC-1; Cell surface adhesion glycoproteins LFA-1/CR3/p150,95 subunit beta; LCAMB; Integrin beta-2; Complement receptor C3 subunit beta; LFA-1; CD18

### Application Instructions

Application table	Application	Dilution
	FACS	1 - 4 µg/ml
	ICC/IF	Assay-dependent
	IP	Assay-dependent
Application Note	* The dilutions indicate recommended starting dilutions and the optimal dilutions or concentrations should be determined by the scientist.	

### Properties

Form	Liquid
Purification	Purified from ascites by protein-A affinity chromatography.
Purity	> 95% (by SDS-PAGE)
Buffer	PBS (pH 7.4) and 15 mM Sodium azide
Preservative	15 mM Sodium azide
Concentration	1 mg/ml
Storage instruction	For continuous use, store undiluted antibody at 2-8°C for up to a week. For long-term storage, aliquot and store at -20°C or below. Storage in frost free freezers is not recommended. Avoid repeated freeze/thaw cycles. Suggest spin the vial prior to opening. The antibody solution should be gently mixed

before use.

Note

For laboratory research only, not for drug, diagnostic or other use.

## Bioinformation

---

Database links

[GeneID: 281877 Bovine](#)

[Swiss-port # P32592 Bovine](#)

Gene Symbol

ITGB2

Gene Full Name

integrin, beta 2 (complement component 3 receptor 3 and 4 subunit)

Background

This gene encodes an integrin beta chain, which combines with multiple different alpha chains to form different integrin heterodimers. Integrins are integral cell-surface proteins that participate in cell adhesion as well as cell-surface mediated signalling. The encoded protein plays an important role in immune response and defects in this gene cause leukocyte adhesion deficiency. Alternative splicing results in multiple transcript variants. [provided by RefSeq, Dec 2014]

Function

Triggers neutrophil transmigration during lung injury through PTK2B/PYK2-mediated activation (By similarity). Integrin alpha-L/beta-2 is a receptor for ICAM1, ICAM2, ICAM3 and ICAM4. Integrins alpha-M/beta-2 and alpha-X/beta-2 are receptors for the iC3b fragment of the third complement component and for fibrinogen. Integrin alpha-X/beta-2 recognizes the sequence G-P-R in fibrinogen alpha-chain. Integrin alpha-M/beta-2 recognizes P1 and P2 peptides of fibrinogen gamma chain. Integrin alpha-M/beta-2 is also a receptor for factor X. Integrin alpha-D/beta-2 is a receptor for ICAM3 and VCAM1. [UniProt]

Research Area

Developmental Biology antibody; Immune System antibody; Signaling Transduction antibody

Calculated Mw

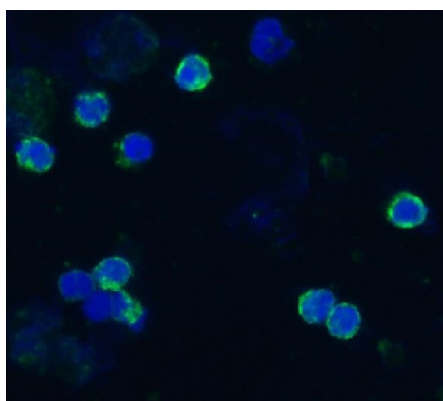
85 kDa

PTM

Both Ser-745 and Ser-756 become phosphorylated when T-cells are exposed to phorbol esters (PubMed:11700305). Phosphorylation on Thr-758 (but not on Ser-756) allows interaction with 14-3-3 proteins (PubMed:11700305, PubMed:16301335).

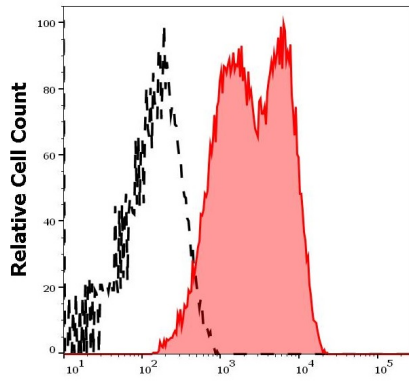
## Images

---



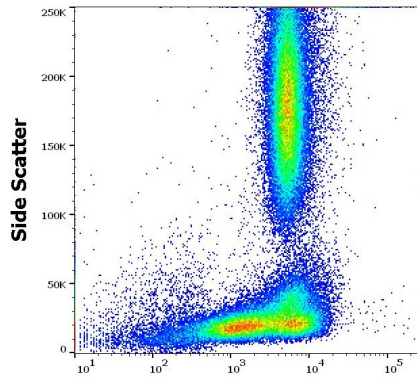
ARG62754 anti-CD18 / LFA1 beta antibody [IVA35] ICC/IF image

Immunofluorescence: Acetone / methanol-fixed Bovine peripheral blood (lymphocyte-enriched suspension) stained with ARG62754 anti-CD18 / LFA1 beta antibody [IVA35] (green), DAPI (blue) for nuclear staining.



ARG62754 anti-CD18 / LFA1 beta antibody [IVA35] FACS image

Flow Cytometry: Separation of stained bovine lymphocytes (red-filled) from unstained bovine lymphocytes (black-dashed). Cells were stained with ARG62754 anti-CD18 / LFA1 beta antibody [IVA35] at 10  $\mu$ g/ml dilution, followed by APC-conjugated Goat anti-Mouse antibody.



ARG62754 anti-CD18 / LFA1 beta antibody [IVA35] FACS image

Flow Cytometry: Bovine peripheral whole blood stained with ARG62754 anti-CD18 / LFA1 beta antibody [IVA35] at 10  $\mu$ g/ml dilution, followed by APC-conjugated Goat anti-Mouse antibody.