

ARG62755 anti-CD18 / LFA1 beta antibody [M18 / 2] (FITC)

Package: 100 µg
Store at: 4°C

Summary

Product Description	FITC-conjugated Rat Monoclonal antibody [M18/2] recognizes CD18 / LFA1 beta
Tested Reactivity	Ms
Species Does Not React With	Dog
Tested Application	FACS
Specificity	The clone M18/2 recognizes CD18 antigen (integrin beta2 subunit; beta2 integrin), a 95 kDa type I transmembrane protein expressed on all leukocytes.
Host	Rat
Clonality	Monoclonal
Clone	M18/2
Isotype	IgG2a
Target Name	CD18 / LFA1 beta
Species	Mouse
Immunogen	Murine cytotoxic T cell glycoproteins
Conjugation	FITC
Alternate Names	MF17; LAD; CD antigen CD18; MF17; MAC-1; Cell surface adhesion glycoproteins LFA-1/CR3/p150,95 subunit beta; LCAMB; Integrin beta-2; Complement receptor C3 subunit beta; LFA-1; CD18

Application Instructions

Application table	Application	Dilution
	FACS	1 - 2 µg/ml

Application Note * The dilutions indicate recommended starting dilutions and the optimal dilutions or concentrations should be determined by the scientist.

Properties

Form	Liquid
Purification Note	The purified antibody is conjugated with Fluorescein isothiocyanate (FITC) under optimum conditions. The reagent is free of unconjugated FITC.
Buffer	PBS (pH 7.4) and 15 mM Sodium azide
Preservative	15 mM Sodium azide
Concentration	0.5 mg/ml
Storage instruction	Aliquot and store in the dark at 2-8°C. Keep protected from prolonged exposure to light. Avoid repeated freeze/thaw cycles. Suggest spin the vial prior to opening. The antibody solution should be gently mixed before use.

Note

For laboratory research only, not for drug, diagnostic or other use.

Bioinformation

Database links

[GeneID: 16414 Mouse](#)

[Swiss-port # P11835 Mouse](#)

Gene Symbol

Itgb2

Gene Full Name

integrin beta 2

Background

CD18, integrin beta2 subunit, forms heterodimers with four types of CD11 molecule to constitute leukocyte (beta2) integrins: alphaLbeta2 (CD11a/CD18, LFA-1), alphaMbeta2 (CD11b/CD18, Mac-1, CR3), alphaXbeta2 (CD11c/CD18) and alphaDbeta2 (CD11d/CD18). In most cases, the response mediated by the integrin is a composite of the functions of its individual subunits. These integrins are essential for proper leukocyte migration, mediating intercellular contacts.

Function

Integrin alpha-L/beta-2 is a receptor for ICAM1, ICAM2, ICAM3 and ICAM4. Integrins alpha-M/beta-2 and alpha-X/beta-2 are receptors for the iC3b fragment of the third complement component and for fibrinogen. Integrin alpha-X/beta-2 recognizes the sequence G-P-R in fibrinogen alpha-chain. Integrin alpha-M/beta-2 recognizes P1 and P2 peptides of fibrinogen gamma chain. Integrin alpha-M/beta-2 is also a receptor for factor X. Integrin alpha-D/beta-2 is a receptor for ICAM3 and VCAM1. Triggers neutrophil transmigration during lung injury through PTK2B/PYK2-mediated activation. [UniProt]

Research Area

Developmental Biology antibody; Immune System antibody; Signaling Transduction antibody

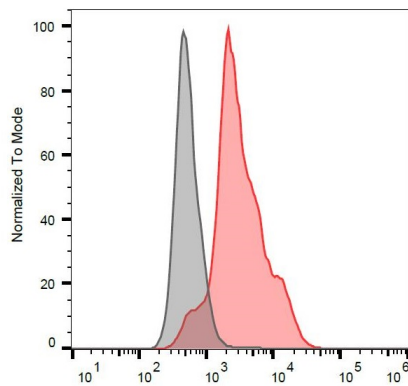
Calculated Mw

85 kDa

PTM

Both Ser-745 and Ser-756 become phosphorylated when T-cells are exposed to phorbol esters (PubMed:11700305). Phosphorylation on Thr-758 (but not on Ser-756) allows interaction with 14-3-3 proteins (PubMed:11700305, PubMed:16301335).

Images

**ARG62755 anti-CD18 / LFA1 beta antibody [M18 / 2] (FITC) FACS image**

Flow Cytometry: Murine splenocytes stained with ARG62755 anti-CD18 / LFA1 beta antibody [M18 / 2] (FITC) at 3 µg/ml dilution (red). Blank sample (grey).