

## ARG62846 anti-CD42b antibody [HIP1]

Package: 100 µg  
Store at: -20°C

### Summary

Product Description	Mouse Monoclonal antibody [HIP1] recognizes CD42b
Tested Reactivity	Hu, NHuPrm
Tested Application	CyTOF®-candidate, FACS, FuncSt, IHC-Fr
Specificity	The clone HIP1 reacts with CD42b (GPIb alpha), a 135-145 kDa membrane glycoprotein expressed on platelets and megakaryocytes. CD42b and CD42c (GPIb beta) are composed in a disulfide linked heterodimer (CD42b/c; 160 kDa); CD42b/c forms a noncovalent complex with CD42a and CD42d. HLDA IV; WS Code P 40
Host	Mouse
Clonality	Monoclonal
Clone	HIP1
Isotype	IgG1
Target Name	CD42b
Immunogen	Peripheral blood mononuclear cells of a patient suffering with CLL.
Conjugation	Un-conjugated
Alternate Names	CD antigen CD42b; Antigen CD42b-alpha; DBPLT3; VWDP; CD42B; GP-Ib alpha; Glycoprotein Ibalpha; BDPLT1; BSS; CD42b-alpha; GPIbA; GPIb-alpha; Platelet glycoprotein Ib alpha chain; BDPLT3; GP1B

### Application Instructions

Application table	Application	Dilution
	CyTOF®-candidate	Assay-dependent
	FACS	1 - 4 µg/ml
	FuncSt	Assay-dependent
	IHC-Fr	Assay-dependent
Application Note	<p>Functional studies: The clone HIP1 inhibits the ristocetin-dependent binding of von Willebrand Factor (vWF) to platelets and ristocetin-induced platelet agglutination.</p> <p>* The dilutions indicate recommended starting dilutions and the optimal dilutions or concentrations should be determined by the scientist.</p>	

### Properties

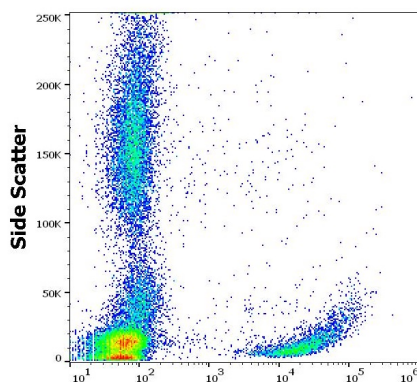
Form	Liquid
Purification	Purified by protein A
Purity	> 95% (by SDS-PAGE)
Buffer	PBS (pH 7.4) and 15 mM Sodium azide

Preservative	15 mM Sodium azide
Concentration	1 mg/ml
Storage instruction	For continuous use, store undiluted antibody at 2-8°C for up to a week. For long-term storage, aliquot and store at -20°C or below. Storage in frost free freezers is not recommended. Avoid repeated freeze/thaw cycles. Suggest spin the vial prior to opening. The antibody solution should be gently mixed before use.
Note	For laboratory research only, not for drug, diagnostic or other use.

## Bioinformation

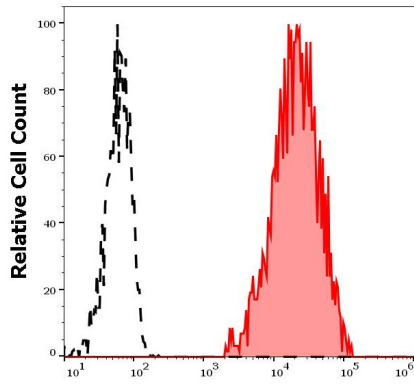
Database links	<a href="#">GeneID: 2811 Human</a> <a href="#">Swiss-port # P07359 Human</a>
Gene Symbol	GP1BA
Gene Full Name	glycoprotein Ib (platelet), alpha polypeptide
Background	CD42b (GPIb alpha) composes together with GPIb beta, GPIX and GPV the GPIb-IX-V receptor complex critical in the process of platelet-rich thrombus formation by tethering the platelet to a thrombogenic surface. CD42b binds to von Willebrand factor (VWF) exposed at a site of vascular injury, as well as to thrombin, coagulation factors XI and XII, high molecular weight kininogen, TSP-1, integrin Mac-1 and P-selectin. The extracellular domain of CD42b by its interactions also contributes to metastasis.
Function	GP-Ib, a surface membrane protein of platelets, participates in the formation of platelet plugs by binding to the A1 domain of vWF, which is already bound to the subendothelium. [UniProt]
Highlight	Related products: <a href="#">CD42b antibodies</a> ; <a href="#">Anti-Mouse IgG secondary antibodies</a> ; Related news: <a href="#">CyTOF-candidate Antibodies</a>
Research Area	Cell Biology and Cellular Response antibody; Immune System antibody
Calculated Mw	72 kDa
PTM	Glycocalicin, which is approximately coextensive with the extracellular part of the molecule, is cleaved off by calpain during platelet lysis.

## Images



ARG62846 anti-CD42b antibody [HIP1] FACS image

Flow Cytometry: Human peripheral blood cells stained with ARG62846 anti-CD42b antibody [HIP1] at 4 µg/ml dilution, followed by APC-conjugated Goat anti-Mouse antibody.



#### ARG62846 anti-CD42b antibody [HIP1] FACS image

Flow Cytometry: Separation of human thrombocytes (red-filled) from CD42b negative lymphocytes (black-dashed). Human peripheral whole blood stained with ARG62846 anti-CD42b antibody [HIP1] at 4 µg/ml dilution, followed by APC-conjugated Goat anti-Mouse antibody.