

**ARG62881**  
**anti-CD52 antibody [HI186]**Package: 100 µg  
Store at: -20°C

### Summary

Product Description	Mouse Monoclonal antibody [HI186] recognizes CD52
Tested Reactivity	Hu
Tested Application	CyTOF®-candidate, FACS, IHC-P
Specificity	The clone HI186 reacts with CD52 (CAMPATH-1), a 21-28 kDa glycoprotein containing a large N-linked carbohydrate moiety; mature CD52 molecule is actually much smaller (approx. 8-9 kDa). CD52 is expressed at high levels on lymphocytes, monocytes/macrophages and in male reproductive tract. HLDA VI; WS Code BP 523 HLDA VI; WS Code T 6T-057
Host	Mouse
Clonality	Monoclonal
Clone	HI186
Isotype	IgG2b
Target Name	CD52
Species	Human
Immunogen	Human tonsil
Conjugation	Un-conjugated
Alternate Names	He5; CAMPATH-1 antigen; Human epididymis-specific protein 5; Cambridge pathology 1 antigen; CDw52; Epididymal secretory protein E5; CDW52; CD antigen CD52

### Application Instructions

Application table	Application	Dilution
	CyTOF®-candidate	Assay-dependent
	FACS	2 µg/ml
	IHC-P	Assay-dependent
Application Note	* The dilutions indicate recommended starting dilutions and the optimal dilutions or concentrations should be determined by the scientist.	

### Properties

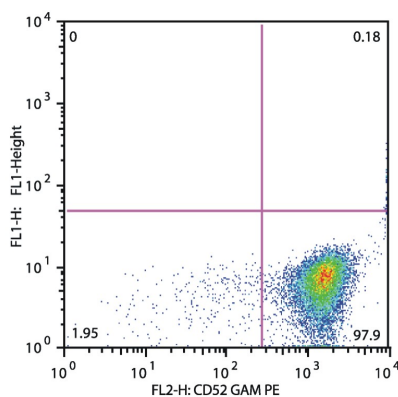
Form	Liquid
Purification	Purified by protein A
Purity	> 95% (by SDS-PAGE)
Buffer	PBS (pH 7.4) and 15 mM Sodium azide
Preservative	15 mM Sodium azide

Concentration	1 mg/ml
Storage instruction	For continuous use, store undiluted antibody at 2-8°C for up to a week. For long-term storage, aliquot and store at -20°C or below. Storage in frost free freezers is not recommended. Avoid repeated freeze/thaw cycles. Suggest spin the vial prior to opening. The antibody solution should be gently mixed before use.
Note	For laboratory research only, not for drug, diagnostic or other use.

## Bioinformation

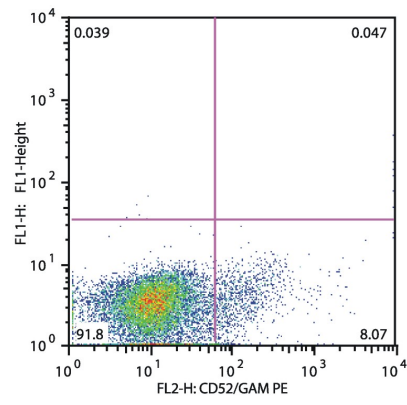
Database links	<a href="#">GeneID: 1043 Human</a> <a href="#">Swiss-port # P31358 Human</a>
Gene Symbol	CD52
Gene Full Name	CD52 molecule
Background	CD52 (CAMPATH-1, HE5) is a highly glycosylated GPI-anchored 21-28 kDa glycopeptide which is present at high levels on lymphocytes, macrophages, epithelial cells of male reproductive tract and mature sperm. Its 12-amino acid backbone carries a complex N-linked carbohydrate moiety, which differs between sperm and leukocyte CD52, as well as the GPI anchor does. CD52 can be acquired by sperm cells from seminal plasma, where it is released by epithelial cells. Although CD52 is not an essential T-cell costimulator, its triggering results in activation of normal human T cells. CD52 is a very good target for antibody/complement-mediated cell lysis.
Function	May play a role in carrying and orienting carbohydrate, as well as having a more specific role. [UniProt]
Highlight	Related products: <a href="#">CD52 antibodies: Anti-Mouse IgG secondary antibodies:</a> Related news: <a href="#">CyTOF-candidate Antibodies</a>
Research Area	Immune System antibody
Calculated Mw	7 kDa

## Images



ARG62881 anti-CD52 antibody [HI186] FACS image

Flow Cytometry: Patient sample with Acute Lymphoblastic Leukemia (CD52 positive cALL) stained with ARG62881 anti-CD52 antibody [HI186], followed by incubation with PE-labelled secondary antibody.



### ARG62881 anti-CD52 antibody [HI186] FACS image

Flow Cytometry: Patient sample with Acute Lymphoblastic Leukemia (CD52 positive cALL) stained with ARG62881 anti-CD52 antibody [HI186], followed by incubation with PE-labelled secondary antibody.