

## ARG62904 anti-CD62L / L-Selectin antibody [LT-TD180]

Package: 100 µg

Store at: -20°C

### Summary

Product Description	Mouse Monoclonal antibody [LT-TD180] recognizes CD62L / L-Selectin
Tested Reactivity	Hu
Tested Application	FACS
Specificity	The clone LT-TD180 reacts with CD62L (L-selectin), a 74-95 kDa single chain type I glycoprotein expressed on most peripheral blood B lymphocytes, T lymphocytes, monocytes and granulocytes; it is also present on a subset of NK cells and certain hematopoietic malignant cells.
Host	Mouse
Clonality	Monoclonal
Clone	LT-TD180
Isotype	IgG1
Target Name	CD62L / L-Selectin
Immunogen	Peripheral blood leukocytes
Conjugation	Un-conjugated
Alternate Names	Leukocyte surface antigen Leu-8; Leukocyte adhesion molecule 1; CD antigen CD62L; PLNHR; LSEL; CD62L; Leukocyte-endothelial cell adhesion molecule 1; L-selectin; LAM1; LNHR; TQ1; CD62 antigen-like family member L; gp90-MEL; Lymph node homing receptor; LYAM1; LECAM1; LEU8; LAM-1

### Application Instructions

Application table	Application	Dilution
	FACS	1 - 5 µg/ml

**Application Note** \* The dilutions indicate recommended starting dilutions and the optimal dilutions or concentrations should be determined by the scientist.

### Properties

Form	Liquid
Purification	Purified from ascites by precipitation methods and ion exchange chromatography.
Purity	> 95% (by SDS-PAGE)
Buffer	PBS (pH 7.4) and 15 mM Sodium azide
Preservative	15 mM Sodium azide
Concentration	1 mg/ml
Storage instruction	For continuous use, store undiluted antibody at 2-8°C for up to a week. For long-term storage, aliquot and store at -20°C or below. Storage in frost free freezers is not recommended. Avoid repeated freeze/thaw cycles. Suggest spin the vial prior to opening. The antibody solution should be gently mixed

before use.

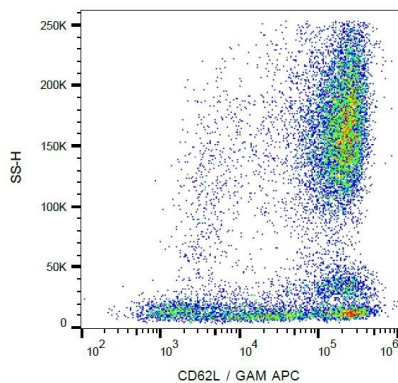
#### Note

For laboratory research only, not for drug, diagnostic or other use.

## Bioinformation

Database links	<a href="#">GeneID: 6402 Human</a> <a href="#">Swiss-port # P14151 Human</a>
Gene Symbol	SELL
Gene Full Name	selectin L
Background	CD62L (L-selectin) is an adhesion glycoprotein that is constitutively expressed on the cell surface of leukocytes and mediates their homing to inflammatory sites and peripheral lymph nodes by enabling rolling along the venular wall. CD62L is also involved in activation-induced neutrophil aggregation. Activation-dependent CD62L shedding, however, counteracts neutrophil rolling. CD62L has also signaling roles including enhance of chemokine receptor expression. Similarly to CD62P, the major ligand of CD62L is PSGL-1 (P-selectin glycoprotein ligand-1).
Function	Cell surface adhesion protein. Mediates the adherence of lymphocytes to endothelial cells of high endothelial venules in peripheral lymph nodes. Promotes initial tethering and rolling of leukocytes in endothelia. [UniProt]
Research Area	Cell Biology and Cellular Response antibody; Developmental Biology antibody; Immune System antibody; Signaling Transduction antibody
Calculated Mw	42 kDa

## Images



ARG62904 anti-CD62L / L-Selectin antibody [LT-TD180] FACS image

Flow Cytometry: Human peripheral blood cells stained with ARG62904 anti-CD62L / L-Selectin antibody [LT-TD180], followed by incubation with APC labelled Goat anti-Mouse secondary antibody.