

ARG62907 anti-CD62L / L-Selectin antibody [DREG56] (FITC)

Package: 100 tests
Store at: 4°C

Summary

Product Description	FITC-conjugated Mouse Monoclonal antibody [DREG56] recognizes CD62L / L-Selectin
Tested Reactivity	Hu
Tested Application	FACS
Specificity	The clone DREG56 recognizes CD62L / L-selectin, a 65-76 kDa cell surface protein, expressed by neutrophils, monocytes, and subsets of T, B, and NK cells, that interacts with specific carbohydrates exposed on activated endothelial cells. HLDA V; WS Code S056
Host	Mouse
Clonality	Monoclonal
Clone	DREG56
Isotype	IgG1
Target Name	CD62L / L-Selectin
Species	Human
Immunogen	PMA-activated human peripheral blood leukocytes
Conjugation	FITC
Alternate Names	Leukocyte surface antigen Leu-8; Leukocyte adhesion molecule 1; CD antigen CD62L; PLNHR; LSEL; CD62L; Leukocyte-endothelial cell adhesion molecule 1; L-selectin; LAM1; LNHR; TQ1; CD62 antigen-like family member L; gp90-MEL; Lymph node homing receptor; LYAM1; LECAM1; LEU8; LAM-1

Application Instructions

Application table	Application	Dilution
	FACS	20 µl / 10 ⁶ cells
Application Note	* The dilutions indicate recommended starting dilutions and the optimal dilutions or concentrations should be determined by the scientist.	

Properties

Form	Liquid
Purification Note	The purified antibody is conjugated with Fluorescein isothiocyanate (FITC) under optimum conditions. The reagent is free of unconjugated FITC and adjusted for direct use. No reconstitution is necessary.
Buffer	PBS, 15 mM Sodium azide and 0.2% (w/v) high-grade protease free BSA
Preservative	15 mM Sodium azide
Stabilizer	0.2% (w/v) high-grade protease free BSA
Storage instruction	Aliquot and store in the dark at 2-8°C. Keep protected from prolonged exposure to light. Avoid repeated freeze/thaw cycles. Suggest spin the vial prior to opening. The antibody solution should be

gently mixed before use.

Note

For laboratory research only, not for drug, diagnostic or other use.

Bioinformation

Database links

[GeneID: 6402 Human](#)

[Swiss-port # P14151 Human](#)

Gene Symbol

SELL

Gene Full Name

selectin L

Background

CD62L (L-selectin) is an adhesion glycoprotein that is constitutively expressed on the cell surface of leukocytes and mediates their homing to inflammatory sites and peripheral lymph nodes by enabling rolling along the venular wall. CD62L is also involved in activation-induced neutrophil aggregation. Activation-dependent CD62L shedding, however, counteracts neutrophil rolling. CD62L has also signaling roles including enhance of chemokine receptor expression. Similarly to CD62P, the major ligand of CD62L is PSGL-1 (P-selectin glycoprotein ligand-1). The level of CD62L expression can be used to help distinguish naive T cells from effector/memory T cells.

Function

Cell surface adhesion protein. Mediates the adherence of lymphocytes to endothelial cells of high endothelial venules in peripheral lymph nodes. Promotes initial tethering and rolling of leukocytes in endothelia. [UniProt]

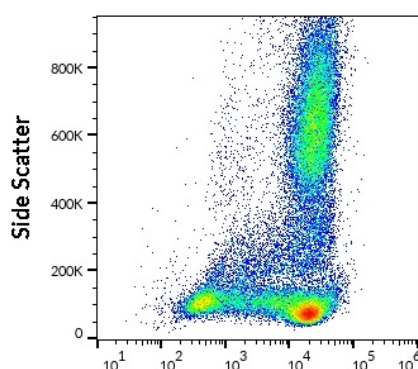
Research Area

Cell Biology and Cellular Response antibody; Developmental Biology antibody; Immune System antibody; Signaling Transduction antibody

Calculated Mw

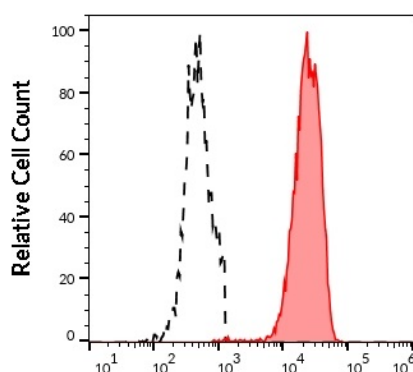
42 kDa

Images



ARG62907 anti-CD62L / L-Selectin antibody [DREG56] (FITC) FACS image

Flow Cytometry: Human peripheral whole blood stained with ARG62907 anti-CD62L / L-Selectin antibody [DREG56] (FITC) (20 µl reagent / 100 µl of peripheral whole blood).



ARG62907 anti-CD62L / L-Selectin antibody [DREG56] (FITC) FACS image

Flow Cytometry: Separation of human neutrophil granulocytes (red-filled) from CD62L negative lymphocytes (black-dashed). Human peripheral whole blood stained with ARG62907 anti-CD62L / L-Selectin antibody [DREG56] (FITC) (20 µl reagent / 100 µl of peripheral whole blood).