

ARG63121
anti-5-bromodeoxyuridine / BrdU antibody [MoBu-1]Package: 100 µg, 50 µg
Store at: -20°C

Summary

Product Description	Mouse Monoclonal antibody [MoBu-1] recognizes 5-bromodeoxyuridine / BrdU
Tested Reactivity	Other
Tested Application	FACS, ICC/IF, IHC-Fr, IHC-P
Specificity	The clone MoBu-1 reacts specifically with BrdU incorporated into DNA during S-phase of a cell cycle. MoBu-1 is also useful for detecting proliferating cells by flow cytometry or immunofluorescence staining. It reacts also specifically with 5-bromouridine (BrU). The clone does not cross-react to EdU (PMID: 23272138).
Host	Mouse
Clonality	Monoclonal
Clone	MoBu-1
Isotype	IgG1
Target Name	5-bromodeoxyuridine / BrdU
Immunogen	5-bromodeoxyuridine conjugated with hemocyanine.
Conjugation	Un-conjugated

Application Instructions

Application table	Application	Dilution
	FACS	1 - 2 µg/ml
	ICC/IF	2 µg/ml
	IHC-Fr	Assay-dependent
	IHC-P	Assay-dependent

Application Note * The dilutions indicate recommended starting dilutions and the optimal dilutions or concentrations should be determined by the scientist.

Properties

Form	Liquid
Purification	Purified from ascites by protein-A affinity chromatography.
Purity	> 95% (by SDS-PAGE)
Buffer	PBS (pH 7.4) and 15 mM Sodium azide
Preservative	15 mM Sodium azide
Concentration	1 mg/ml
Storage instruction	For continuous use, store undiluted antibody at 2-8°C for up to a week. For long-term storage, aliquot and store at -20°C or below. Storage in frost free freezers is not recommended. Avoid repeated

freeze/thaw cycles. Suggest spin the vial prior to opening. The antibody solution should be gently mixed before use.

Note

For laboratory research only, not for drug, diagnostic or other use.

Bioinformation

Background

Bromodeoxyuridine (BrdU) is a thymidine analog which is selectively incorporated into the DNA of proliferating cells to provide a marker for the DNA being replicated. The number of proliferating cells can then be detected in cell lysates, tissue sections or suspensions using an antibody specific for the BrdU.

Highlight

Related products:

[BrdU antibodies](#); [BrdU Duos / Panels](#); [Anti-Mouse IgG secondary antibodies](#);

Related news:

[Neuronal Development Marker](#)

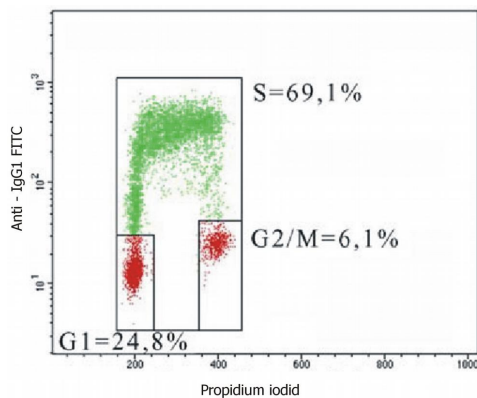
[Choose the Best ZIKA Virus Antibodies](#)

[Fight microcephaly with arigo](#)

Research Area

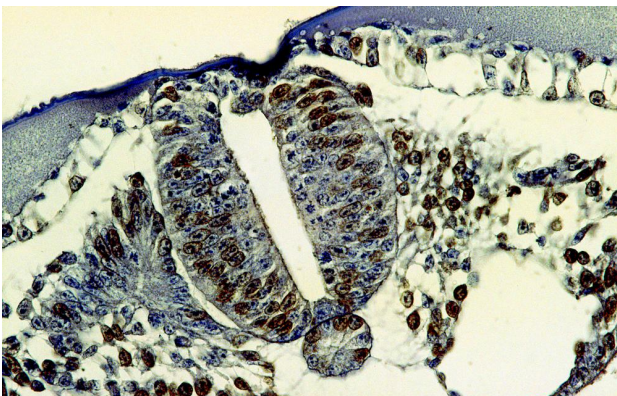
Cell Biology and Cellular Response antibody; Controls and Markers antibody; Gene Regulation antibody; Neuroscience antibody

Images



ARG63121 anti-5-bromodeoxyuridine / BrdU antibody [MoBu-1]
FACS image

Flow Cytometry: 5-bromodeoxyuridin (BrdU) incorporated CEM cells stained with ARG63121 anti-5-bromodeoxyuridine / BrdU antibody [MoBu-1], followed by incubation with FITC-labelled secondary antibody.



ARG63121 anti-5-bromodeoxyuridine / BrdU antibody [MoBu-1] IHC-P image

Immunohistochemistry: Bromodeoxyuridine-labeled cells (chick embryo; paraffin-embedded sections) stained with ARG63121 anti-5-bromodeoxyuridine / BrdU antibody [MoBu-1].