

ARG63122 anti-ATF2 antibody

Package: 100 µg, 50 µg
Store at: -20°C

Summary

Product Description	Goat Polyclonal antibody recognizes ATF2
Tested Reactivity	Hu
Predict Reactivity	Cow, Rat, Dog
Tested Application	WB
Host	Goat
Clonality	Polyclonal
Isotype	IgG
Target Name	ATF2
Species	Human
Immunogen	C-IVMAPSSQSQPSGS
Conjugation	Un-conjugated
Alternate Names	EC 2.3.1.48; Histone acetyltransferase ATF2; Activating transcription factor 2; cAMP-dependent transcription factor ATF-2; Cyclic AMP-dependent transcription factor ATF-2; CREB2; HB16; CREB-2; Cyclic AMP-responsive element-binding protein 2; cAMP-responsive element-binding protein 2; CRE-BP1; cAMP response element-binding protein CRE-BP1; TREB7

Application Instructions

Application table	Application	Dilution
	WB	0.3 - 1 µg/ml

Application Note
WB: Recommend incubate at RT for 1h.
* The dilutions indicate recommended starting dilutions and the optimal dilutions or concentrations should be determined by the scientist.

Properties

Form	Liquid
Purification	Purified from goat serum by antigen affinity chromatography.
Buffer	Tris saline (pH 7.3), 0.02% Sodium azide and 0.5% BSA.
Preservative	0.02% Sodium azide
Stabilizer	0.5% BSA
Concentration	0.5 mg/ml
Storage instruction	For continuous use, store undiluted antibody at 2-8°C for up to a week. For long-term storage, aliquot and store at -20°C or below. Storage in frost free freezers is not recommended. Avoid repeated freeze/thaw cycles. Suggest spin the vial prior to opening. The antibody solution should be gently mixed before use.

Bioinformation

Database links

[GeneID: 1386 Human](#)

[Swiss-port # P15336 Human](#)

Background

This gene encodes a transcription factor that is a member of the leucine zipper family of DNA binding proteins. This protein binds to the cAMP-responsive element (CRE), an octameric palindrome. It forms a homodimer or a heterodimer with c-Jun and stimulates CRE-dependent transcription. This protein is also a histone acetyltransferase (HAT) that specifically acetylates histones H2B and H4 in vitro; thus it may represent a class of sequence-specific factors that activate transcription by direct effects on chromatin components. Several alternatively spliced transcript variants have been found for this gene. [provided by RefSeq, Jan 2012]

Highlight

Related Antibody Duos and Panels:

[ARG30227 Phospho ATF2 Antibody Panel \(Total, pT69, pT71\)](#)

Related products:

[ATF2 antibodies](#); [ATF2 ELISA Kits](#); [ATF2 Duos / Panels](#); [Anti-Goat IgG secondary antibodies](#);

Research Area

Gene Regulation antibody; Immune System antibody

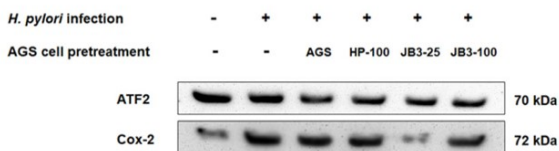
Calculated Mw

55 kDa

PTM

Phosphorylation of Thr-69 by MAPK14 and MAPK11, and at Thr-71 by MAPK1/ERK2, MAPK3/ERK1, MAPK11, MAPK12 and MAPK14 in response to external stimulus like insulin causes increased transcriptional activity. Phosphorylated by PLK3 following hyperosmotic stress. Also phosphorylated and activated by JNK and CaMK4. ATM-mediated phosphorylation at Ser-490 and Ser-498 stimulates its function in DNA damage response. Phosphorylation at Ser-62, Thr-73 and Ser-121 activates its transcriptional activity. Phosphorylation at Thr-69 or Thr-71 enhances its histone acetyltransferase (HAT) activity.

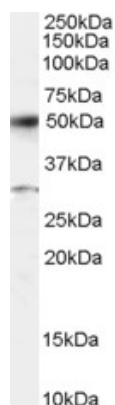
Images



ARG63122 anti-ATF2 antibody WB image

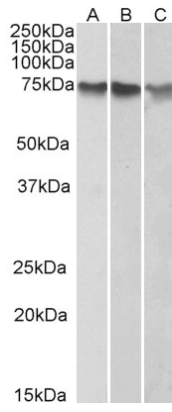
Western blot: AGS cells stained with [ARG56421 anti-COX2 antibody](#), ARG63122 anti-ATF2 antibody and [ARG65352 Donkey anti-Goat IgG antibody \(HRP\)](#).

From Anh Duy Do et al. Front Immunol. (2022), [doi: 10.3389/fimmu.2021.796177](#), Fig. 5.D.



ARG63122 anti-ATF2 antibody WB image

Western Blot: Human Placenta lysate (RIPA buffer, 35 µg total protein per lane) stained with ARG63122 anti-ATF2 antibody at 0.5 µg/ml dilution.



ARG63122 anti-ATF2 antibody WB image

Western Blot: HepG2 (A), K562 (B) and HeLa (C) nuclear lysates (35 μ g protein in RIPA buffer) stained with ARG63122 anti-ATF2 antibody at 1 μ g/ml dilution.