

ARG63144 anti-TRPM7 / LTRPC7 antibody

Package: 100 µg
Store at: -20°C

Summary

Product Description	Goat Polyclonal antibody recognizes TRPM7 / LTRPC7
Tested Reactivity	Hu, Ms
Predict Reactivity	Dog, Rat, Pig
Tested Application	ICC/IF, IHC-P
Host	Goat
Clonality	Polyclonal
Isotype	IgG
Target Name	TRPM7 / LTRPC7
Species	Human
Immunogen	C-TKESESTNSVRLML
Conjugation	Un-conjugated
Alternate Names	Transient receptor potential cation channel subfamily M member 7; CHAK; ALSPDC; LTrpC7; LTRPC7; CHAK1; Channel-kinase 1; TRP-PLIK; EC 2.7.11.1; LTrpC-7; Long transient receptor potential channel 7

Application Instructions

Application table	Application	Dilution
	ICC/IF	10 µg/ml
	IHC-P	4 - 6 µg/ml
Application Note	IHC-P: Antigen Retrieval: Steam tissue section in Citrate buffer (pH 6.0). * The dilutions indicate recommended starting dilutions and the optimal dilutions or concentrations should be determined by the scientist.	

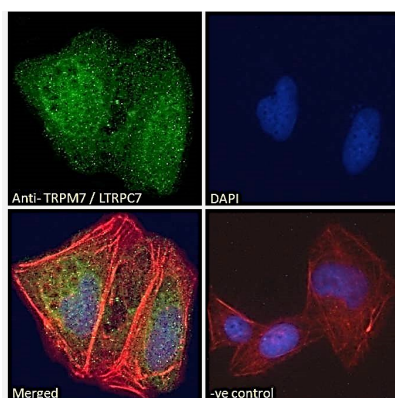
Properties

Form	Liquid
Purification	Purified from goat serum by antigen affinity chromatography.
Buffer	Tris saline (pH 7.3), 0.02% Sodium azide and 0.5% BSA.
Preservative	0.02% Sodium azide
Stabilizer	0.5% BSA
Concentration	0.5 mg/ml
Storage instruction	For continuous use, store undiluted antibody at 2-8°C for up to a week. For long-term storage, aliquot and store at -20°C or below. Storage in frost free freezers is not recommended. Avoid repeated freeze/thaw cycles. Suggest spin the vial prior to opening. The antibody solution should be gently mixed before use.

Bioinformation

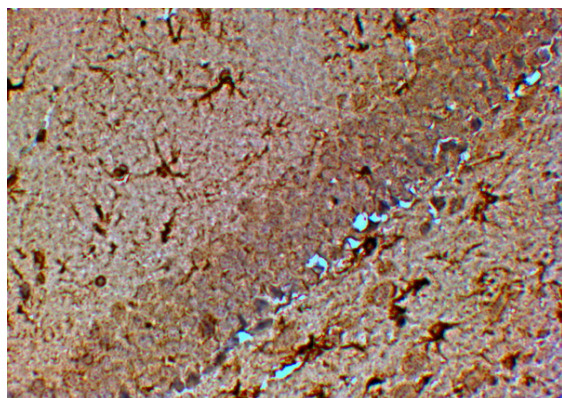
Database links	GeneID: 54822 Human
	GeneID: 58800 Mouse
	Swiss-port # Q923J1 Mouse
	Swiss-port # Q96QT4 Human
Background	The protein encoded by this gene is both an ion channel and a serine/threonine protein kinase. The kinase activity is essential for the ion channel function, which serves to increase intracellular calcium levels and to help regulate magnesium ion homeostasis. Defects in this gene are a cause of amyotrophic lateral sclerosis-parkinsonism/dementia complex of Guam.[provided by RefSeq, May 2010]
Research Area	Neuroscience antibody
Calculated Mw	213 kDa
PTM	Autophosphorylated.

Images



ARG63144 anti-TRPM7 / LTRPC7 antibody ICC/IF image

Immunofluorescence: Paraformaldehyde fixed U2OS cells permeabilized with 0.15% Triton. Cells were stained with ARG63144 anti-TRPM7 / LTRPC7 antibody (green) at 10 µg/ml dilution for 1 hour. DAPI (blue) for nuclear staining. Phalloidin (red) for Actin filaments staining. Negative control: Unimmunized goat IgG (green) at 10 µg/ml dilution.



ARG63144 anti-TRPM7 / LTRPC7 antibody IHC-P image

Immunohistochemistry: paraffin embedded Mouse Hippocampus. (Steamed antigen retrieval with citrate buffer pH 6) stained with ARG63144 anti-TRPM7 / LTRPC7 antibody at 4 µg/ml dilution followed by HRP-staining. Similar results were obtained after antigen retrieval at pH9.