

## ARG63189 anti-ELMO3 antibody

Package: 100 µg  
Store at: -20°C

### Summary

Product Description	Goat Polyclonal antibody recognizes ELMO3
Tested Reactivity	Hu
Predict Reactivity	Dog
Tested Application	IHC-P, WB
Host	Goat
Clonality	Polyclonal
Isotype	IgG
Target Name	ELMO3
Species	Human
Immunogen	TNFnFCYDCSIAEP
Conjugation	Un-conjugated
Alternate Names	ELMO-3; CED12; Engulfment and cell motility protein 3; CED-12

### Application Instructions

Application table	Application	Dilution
	IHC-P	5 - 10 µg/ml
	WB	0.1 - 0.3 µg/ml
Application Note	IHC-P: Antigen Retrieval: Steam tissue section in Citrate buffer (pH 6.0). WB: Recommend incubate at RT for 1h. * The dilutions indicate recommended starting dilutions and the optimal dilutions or concentrations should be determined by the scientist.	

### Properties

Form	Liquid
Purification	Purified from goat serum by antigen affinity chromatography.
Buffer	Tris saline (pH 7.3), 0.02% Sodium azide and 0.5% BSA.
Preservative	0.02% Sodium azide
Stabilizer	0.5% BSA
Concentration	0.5 mg/ml
Storage instruction	For continuous use, store undiluted antibody at 2-8°C for up to a week. For long-term storage, aliquot and store at -20°C or below. Storage in frost free freezers is not recommended. Avoid repeated freeze/thaw cycles. Suggest spin the vial prior to opening. The antibody solution should be gently mixed before use.

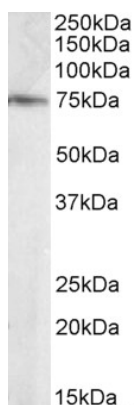
## Note

For laboratory research only, not for drug, diagnostic or other use.

## Bioinformation

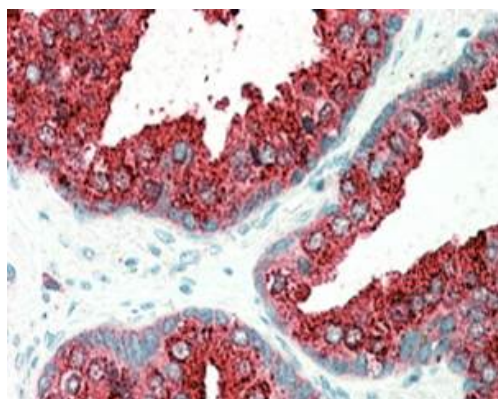
Database links	<a href="#">GeneID: 79767 Human</a> <a href="#">Swiss-port # Q96BJ8 Human</a>
Background	The protein encoded by this gene is similar to a C. elegans protein that functions in phagocytosis of apoptotic cells and in cell migration. Other members of this small family of engulfment and cell motility (ELMO) proteins have been shown to interact with the dedicator of cyto-kinesis 1 protein to promote phagocytosis and effect cell shape changes. [provided by RefSeq, Jul 2008]
Research Area	Cell Biology and Cellular Response antibody; Cell Death antibody; Metabolism antibody
Calculated Mw	81 kDa

## Images



ARG63189 anti-ELMO3 antibody WB image

Western Blot: Human Brain (Hippocampus) lysate (RIPA buffer, 35 µg total protein per lane) stained with ARG63189 anti-ELMO3 antibody at 0.1 µg/ml dilution.



ARG63189 anti-ELMO3 antibody IHC-P image

Immunohistochemistry: paraffin embedded Human Prostate. (Steamed antigen retrieval with citrate buffer pH 6) stained with ARG63189 anti-ELMO3 antibody at 5 µg/ml dilution followed by AP-staining.