

## ARG63212 anti-KLF15 antibody

Package: 100 µg  
Store at: -20°C

### Summary

Product Description	Goat Polyclonal antibody recognizes KLF15
Tested Reactivity	Hu
Predict Reactivity	Ms, Rat, Pig
Tested Application	FACS, WB
Host	Goat
Clonality	Polyclonal
Isotype	IgG
Target Name	KLF15
Species	Human
Immunogen	VDHLLPVDFENFSS-C
Conjugation	Un-conjugated
Alternate Names	Krueppel-like factor 15; Kidney-enriched krueppel-like factor; KKLf

### Application Instructions

Application table	Application	Dilution
	FACS	10 µg/ml
	WB	0.3 - 1 µg/ml
Application Note	WB: Recommend incubate at RT for 1h. * The dilutions indicate recommended starting dilutions and the optimal dilutions or concentrations should be determined by the scientist.	

### Properties

Form	Liquid
Purification	Purified from goat serum by antigen affinity chromatography.
Buffer	Tris saline (pH 7.3), 0.02% Sodium azide and 0.5% BSA.
Preservative	0.02% Sodium azide
Stabilizer	0.5% BSA
Concentration	0.5 mg/ml
Storage instruction	For continuous use, store undiluted antibody at 2-8°C for up to a week. For long-term storage, aliquot and store at -20°C or below. Storage in frost free freezers is not recommended. Avoid repeated freeze/thaw cycles. Suggest spin the vial prior to opening. The antibody solution should be gently mixed before use.

Note

For laboratory research only, not for drug, diagnostic or other use.

Bioinformation

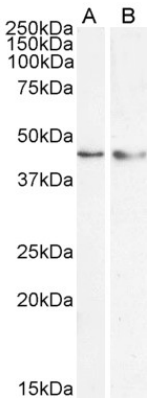
Database links	<a href="#">GeneID: 28999 Human</a> <a href="#">Swiss-port # Q9UIH9 Human</a>
Gene Symbol	KLF15
Gene Full Name	Kruppel-like factor 15
Function	Transcriptional regulator that binds to the GA element of the CLCNKA promoter. Binds to the KCNIP2 promoter and regulates KCNIP2 circadian expression in the heart (By similarity). Is a repressor of CTGF expression, involved in the control of cardiac fibrosis. It is also involved in the control of cardiac hypertrophy acting through the inhibition of MEF2A and GATA4 (By similarity). Involved in podocyte differentiation (By similarity). Inhibits MYOCD activity. Is a negative regulator of TP53 acetylation. Inhibits NF-kappa-B activation through repression of EP300-dependent RELA acetylation. [UniProt]
Research Area	Cell Biology and Cellular Response antibody; Gene Regulation antibody
Calculated Mw	44 kDa

Images



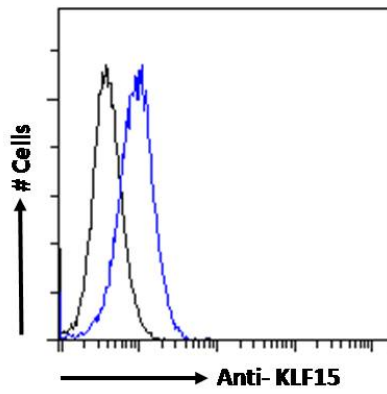
ARG63212 anti-KLF15 antibody WB image

Western Blot: Human Kidney lysate (35 µg protein in RIPA buffer) stained with ARG63212 anti-KLF15 antibody at 0.5 µg/ml dilution.



ARG63212 anti-KLF15 antibody WB image

Western blot: 35 µg of HepG2 nucleus (A) and HeLa (B) cell lysates (in RIPA buffer) stained with ARG63212 anti-KLF15 antibody at 1 µg/ml (A) and 0.5 µg/ml (B) dilutions and incubated at RT for 1 hour.



#### ARG63212 anti-KLF15 antibody FACS image

Flow Cytometry: Paraformaldehyde-fixed HepG2 cells permeabilized with 0.5% Triton. Cells were stained with ARG63212 anti-KLF15 antibody (blue line) at 10 µg/ml dilution for 1 hour, followed by incubation with Alexa FluorR 488 labelled secondary antibody. IgG control: Unimmunized goat IgG (black line).