

ARG63222 anti-KLF8 / BKLF3 antibody

Package: 100 µg
Store at: -20°C

Summary

Product Description	Goat Polyclonal antibody recognizes KLF8 / BKLF3
Tested Reactivity	Hu
Predict Reactivity	Pig
Tested Application	IHC-P, WB
Specificity	This antibody is expected to recognise isoform 1 (NP_009181.2) and isoform 2 (NP_001152768.1).
Host	Goat
Clonality	Polyclonal
Isotype	IgG
Target Name	KLF8 / BKLF3
Species	Human
Immunogen	VDMDKLINNLEVQ-C
Conjugation	Un-conjugated
Alternate Names	Krueppel-like factor 8; BKLF3; Basic krueppel-like factor 3; ZNF741; Zinc finger protein 741

Application Instructions

Application table	Application	Dilution
	IHC-P	3 - 5 µg/ml
	WB	1 - 3 µg/ml
Application Note	WB: Recommend incubate at RT for 1h. IHC-P: Antigen Retrieval: Steam tissue section in Citrate buffer (pH 6.0). * The dilutions indicate recommended starting dilutions and the optimal dilutions or concentrations should be determined by the scientist.	

Properties

Form	Liquid
Purification	Purified from goat serum by antigen affinity chromatography.
Buffer	Tris saline (pH 7.3), 0.02% Sodium azide and 0.5% BSA.
Preservative	0.02% Sodium azide
Stabilizer	0.5% BSA
Concentration	0.5 mg/ml
Storage instruction	For continuous use, store undiluted antibody at 2-8°C for up to a week. For long-term storage, aliquot and store at -20°C or below. Storage in frost free freezers is not recommended. Avoid repeated freeze/thaw cycles. Suggest spin the vial prior to opening. The antibody solution should be gently mixed

before use.

Note

For laboratory research only, not for drug, diagnostic or other use.

Bioinformation

Database links

[GeneID: 11279 Human](#)

[Swiss-port # O95600 Human](#)

Background

This gene encodes a protein which is a member of the Sp/KLF family of transcription factors. Members of this family contain a C-terminal DNA-binding domain with three Kruppel-like zinc fingers. The encoded protein is thought to play an important role in the regulation of epithelial to mesenchymal transition, a process which occurs normally during development but also during metastasis. A pseudogene has been identified on chromosome 16. Alternative splicing results in multiple transcript variants. [provided by RefSeq, Apr 2009]

Research Area

Gene Regulation antibody

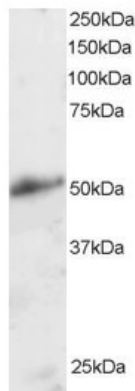
Calculated Mw

39 kDa

PTM

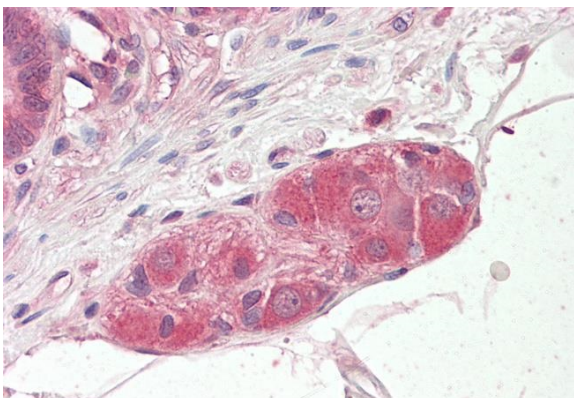
Sumoylation at Lys-67 represses transcriptional activity and reduces cell cycle progression into the G(1) phase. Has no effect on subcellular location.

Images



ARG63222 anti-KLF8 / BKLF3 antibody WB image

Western Blot: Human Kidney lysate (RIPA buffer, 30µg total protein per lane) stained with ARG63222 anti-KLF8 / BKLF3 antibody at 2 µg/ml dilution.



ARG63222 anti-KLF8 / BKLF3 antibody IHC-P image

Immunohistochemistry: Paraffin-embedded Human small intestine tissue. Antigen Retrieval: Steam tissue section in Citrate buffer (pH 6.0). The tissue section was stained with ARG63222 anti-KLF8 / BKLF3 antibody at 3.75 µg/ml dilution followed by AP-staining.