

ARG63229 anti-ELF3 / ERT / ESX antibody

Package: 100 µg
Store at: -20°C

Summary

Product Description	Goat Polyclonal antibody recognizes ELF3 / ERT / ESX
Tested Reactivity	Hu
Tested Application	WB
Host	Goat
Clonality	Polyclonal
Isotype	IgG
Target Name	ELF3 / ERT / ESX
Species	Human
Immunogen	C-SGWKEEEVLQSRN
Conjugation	Un-conjugated
Alternate Names	ERT; Epithelium-specific Ets transcription factor 1; Epithelial-restricted with serine box; ESE-1; ESX; E74-like factor 3; EPR-1; Epithelium-restricted Ets protein ESX; ETS-related transcription factor Elf-3

Application Instructions

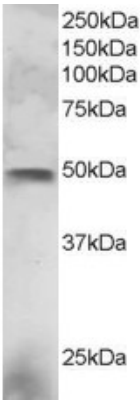
Application table	Application	Dilution
	WB	2 - 4 µg/ml
Application Note	WB: Recommend incubate at RT for 1h. * The dilutions indicate recommended starting dilutions and the optimal dilutions or concentrations should be determined by the scientist.	

Properties

Form	Liquid
Purification	Purified from goat serum by antigen affinity chromatography.
Buffer	Tris saline (pH 7.3), 0.02% Sodium azide and 0.5% BSA.
Preservative	0.02% Sodium azide
Stabilizer	0.5% BSA
Concentration	0.5 mg/ml
Storage instruction	For continuous use, store undiluted antibody at 2-8°C for up to a week. For long-term storage, aliquot and store at -20°C or below. Storage in frost free freezers is not recommended. Avoid repeated freeze/thaw cycles. Suggest spin the vial prior to opening. The antibody solution should be gently mixed before use.
Note	For laboratory research only, not for drug, diagnostic or other use.

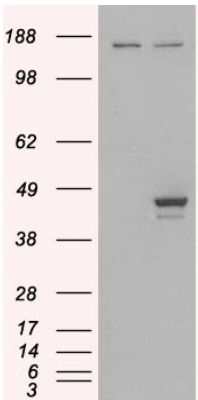
Database links	GeneID: 1999 Human Swiss-port # P78545 Human
Gene Symbol	ELF3
Gene Full Name	E74-like factor 3 (ets domain transcription factor, epithelial-specific)
Function	Transcriptional activator that binds and transactivates ETS sequences containing the consensus nucleotide core sequence GGA[AT]. Acts synergistically with POU2F3 to transactivate the SPRR2A promoter and with RUNX1 to transactivate the ANGPT1 promoter. Also transactivates collagenase, CCL20, CLND7, FLG, KRT8, NOS2, PTGS2, SPRR2B, TGFBR2 and TGM3 promoters. Represses KRT4 promoter activity. Involved in mediating vascular inflammation. May play an important role in epithelial cell differentiation and tumorigenesis. May be a critical downstream effector of the ERBB2 signaling pathway. May be associated with mammary gland development and involution. Plays an important role in the regulation of transcription with TATA-less promoters in preimplantation embryos, which is essential in preimplantation development (By similarity). [UniProt]
Research Area	Gene Regulation antibody
Calculated Mw	41 kDa

Images



ARG63229 anti-ELF3 / ERT / ESX antibody WB image

Western blot: NCI-H460 lysate (RIPA buffer, 30µg total protein per lane) stained with ARG63229 anti-ELF3 / ERT / ESX antibody at 3 µg/ml dilution.



ARG63229 anti-ELF3 / ERT / ESX antibody WB image

Western blot: 1). Mock transfection; 2) ELF3 (RC200631) expressing plasmid transfected HEK293 cell lysate stained with ARG63229 anti-ELF3 / ERT / ESX antibody.