

## ARG63245 anti-KIF4A antibody

Package: 100 µg  
Store at: -20°C

### Summary

Product Description	Goat Polyclonal antibody recognizes KIF4A
Tested Reactivity	Hu, Ms
Predict Reactivity	Cow, Rat, Pig
Tested Application	FACS, ICC/IF, WB
Host	Goat
Clonality	Polyclonal
Isotype	IgG
Target Name	KIF4A
Immunogen	SFFSGCSPIEEEAH
Conjugation	Un-conjugated
Alternate Names	KIF4G1; KIF4; Chromosome-associated kinesin KIF4A; MRX100; Chromokinesin-A

### Application Instructions

Application table	Application	Dilution
	FACS	10 µg/ml
	ICC/IF	10 µg/ml
	WB	1 - 2 µg/ml
Application Note	WB: Recommend incubate at RT for 1h. * The dilutions indicate recommended starting dilutions and the optimal dilutions or concentrations should be determined by the scientist.	

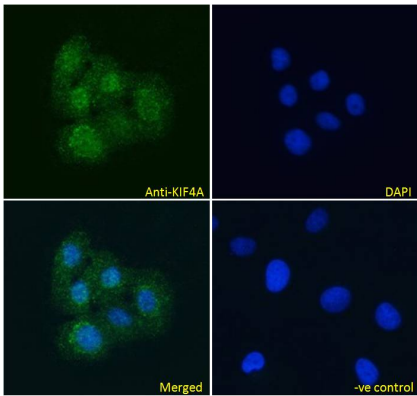
### Properties

Form	Liquid
Purification	Purified from goat serum by antigen affinity chromatography.
Buffer	Tris saline (pH 7.3), 0.02% Sodium azide and 0.5% BSA.
Preservative	0.02% Sodium azide
Stabilizer	0.5% BSA
Concentration	0.5 mg/ml
Storage instruction	For continuous use, store undiluted antibody at 2-8°C for up to a week. For long-term storage, aliquot and store at -20°C or below. Storage in frost free freezers is not recommended. Avoid repeated freeze/thaw cycles. Suggest spin the vial prior to opening. The antibody solution should be gently mixed before use.

Bioinformation

Database links	<a href="#">GeneID: 24137 Human</a> <a href="#">Swiss-port # O95239 Human</a>
Gene Symbol	KIF4A
Gene Full Name	kinesin family member 4A
Background	This gene encodes a member of the kinesin 4 subfamily of kinesin related proteins. The encoded protein is an ATP dependent microtubule-based motor protein that is involved in the intracellular transport of membranous organelles. This protein also associates with condensed chromosome arms and may be involved in maintaining chromosome integrity during mitosis. This protein may also be involved in the organization of the central spindle prior to cytokinesis. A pseudogene of this gene is found on chromosome X.[provided by RefSeq, Mar 2010]
Function	Motor protein that translocates PRC1 to the plus ends of interdigitating spindle microtubules during the metaphase to anaphase transition, an essential step for the formation of an organized central spindle midzone and midbody and for successful cytokinesis. May play a role in mitotic chromosomal positioning and bipolar spindle stabilization. [UniProt]
Research Area	Cell Biology and Cellular Response antibody; Cell Death antibody; Gene Regulation antibody; Signaling Transduction antibody
Calculated Mw	140 kDa

Images



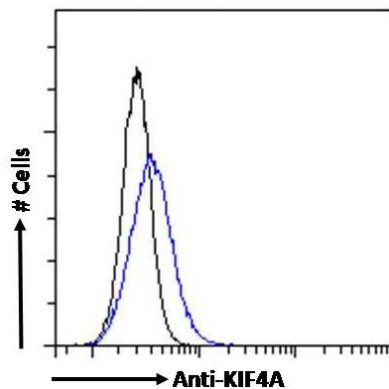
ARG63245 anti-KIF4A antibody ICC/IF image

Immunofluorescence: Paraformaldehyde fixed U2OS cells permeabilized with 0.15% Triton. Cells were stained with ARG63245 anti-KIF4A antibody (green) at 10 µg/ml dilution for 1 hour. DAPI (blue) for nuclear staining. Negative control: Unimmunized goat IgG (green) at 10 µg/ml dilution.



ARG63245 anti-KIF4A antibody WB image

Western blot: 35 µg of NIH/3T3 nucleus (A) and Human ovary (B, negative control) lysates (in RIPA buffer) stained with ARG63245 anti-KIF4A antibody at 2 µg/ml dilution and incubated at RT for 1 hour.



#### ARG63245 anti-KIF4A antibody FACS image

Flow Cytometry: Paraformaldehyde-fixed HEK293 cells permeabilized with 0.5% Triton. Cells were stained with ARG63245 anti-KIF4A antibody (blue line) at 10  $\mu\text{g}/\text{ml}$  dilution for 1 hour, followed by incubation with Alexa FluorR 488 labelled secondary antibody. IgG control: Unimmunized goat IgG (black line).