

ARG63248 anti-TFE3 antibody

Package: 100 µg
Store at: -20°C

Summary

Product Description	Goat Polyclonal antibody recognizes TFE3
Tested Reactivity	Hu
Predict Reactivity	Ms, Cow, Dog
Tested Application	WB
Host	Goat
Clonality	Polyclonal
Isotype	IgG
Target Name	TFE3
Species	Human
Immunogen	SHAAEPARDGVEAS-C
Conjugation	Un-conjugated
Alternate Names	bHLHe33; TFEA; Class E basic helix-loop-helix protein 33; Transcription factor E3; RCCX1; RCCP2

Application Instructions

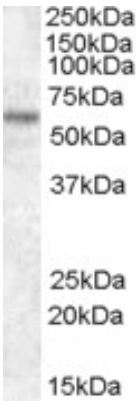
Application table	Application	Dilution
	WB	1 - 3 µg/ml
Application Note	WB: Recommend incubate at RT for 1h. * The dilutions indicate recommended starting dilutions and the optimal dilutions or concentrations should be determined by the scientist.	

Properties

Form	Liquid
Purification	Purified from goat serum by antigen affinity chromatography.
Buffer	Tris saline (pH 7.3), 0.02% Sodium azide and 0.5% BSA.
Preservative	0.02% Sodium azide
Stabilizer	0.5% BSA
Concentration	0.5 mg/ml
Storage instruction	For continuous use, store undiluted antibody at 2-8°C for up to a week. For long-term storage, aliquot and store at -20°C or below. Storage in frost free freezers is not recommended. Avoid repeated freeze/thaw cycles. Suggest spin the vial prior to opening. The antibody solution should be gently mixed before use.
Note	For laboratory research only, not for drug, diagnostic or other use.

Database links	GeneID: 7030 Human Swiss-port # P19532 Human
Background	The microphthalmia transcription factor/transcription factor E (MITF-TFE) family of basic helix-loop-helix leucine zipper (bHLH-Zip) transcription factors includes four family members: MITF, TFE3, TFEB and TFEC. The TFE3 protein encoded by this gene activates transcription through binding to the muE3 motif of the immunoglobulin heavy-chain enhancer. The TFEC protein forms heterodimers with the TFE3 protein and inhibits TFE3-dependent transcription activation. The TFE3 protein interacts with transcription regulators such as E2F3, SMAD3, and LEF-1, and is involved in TGF-beta-induced transcription, playing important roles in cell growth, proliferation, and osteoclast and macrophage differentiation. The TFE3 protein also activates hepatic IRS-2 gene, and induces hexokinase II (HK2) and insulin-induced gene 1 (INSIG1); it participates in insulin signaling and could be a therapeutic target for diabetes. This gene is also involved in chromosomal translocations, resulting in different fusion gene products in papillary renal cell carcinomas and alveolar soft part sarcomas, such as PRCC-TFE3, RCC17-TFE3, PSF-TFE3, NonO (p54nrb)-TFE3 and ASPL-TFE3.[provided by RefSeq, Dec 2009]
Research Area	Gene Regulation antibody; Immune System antibody
Calculated Mw	62 kDa
PTM	Sumoylated; does not affect dimerization with MITF.

Images



ARG63248 anti-TFE3 antibody WB image

Western Blot: HEK293 lysate (35 µg protein in RIPA buffer) stained with ARG63248 anti-TFE3 antibody at 1 µg/ml dilution.