

ARG63250 anti-TRIM28 / KAP1 antibody

Package: 100 µg
Store at: -20°C

Summary

Product Description	Goat Polyclonal antibody recognizes TRIM28 / KAP1
Tested Reactivity	Hu
Predict Reactivity	Ms
Tested Application	FACS, ICC/IF, IHC-P
Host	Goat
Clonality	Polyclonal
Isotype	IgG
Target Name	TRIM28 / KAP1
Species	Human
Immunogen	C-SSQELSGGPGDGP
Conjugation	Un-conjugated
Alternate Names	TIF1-beta; Tripartite motif-containing protein 28; EC 6.3.2.-; KAP1; PPP1R157; TIF1B; RNF96; RING finger protein 96; KRIP-1; Nuclear corepressor KAP-1; Transcription intermediary factor 1-beta; KAP-1; KRAB-interacting protein 1; KRAB-associated protein 1; TF1B; E3 SUMO-protein ligase TRIM28

Application Instructions

Application table	Application	Dilution
	FACS	10 µg/ml
	ICC/IF	10 µg/ml
	IHC-P	2 - 4 µg/ml
	Application Note	
		IHC-P: Antigen Retrieval: Steam tissue section in Tris/EDTA buffer (pH 9.0). * The dilutions indicate recommended starting dilutions and the optimal dilutions or concentrations should be determined by the scientist.

Properties

Form	Liquid
Purification	Purified from goat serum by antigen affinity chromatography.
Buffer	Tris saline (pH 7.3), 0.02% Sodium azide and 0.5% BSA.
Preservative	0.02% Sodium azide
Stabilizer	0.5% BSA
Concentration	0.5 mg/ml
Storage instruction	For continuous use, store undiluted antibody at 2-8°C for up to a week. For long-term storage, aliquot and store at -20°C or below. Storage in frost free freezers is not recommended. Avoid repeated

freeze/thaw cycles. Suggest spin the vial prior to opening. The antibody solution should be gently mixed before use.

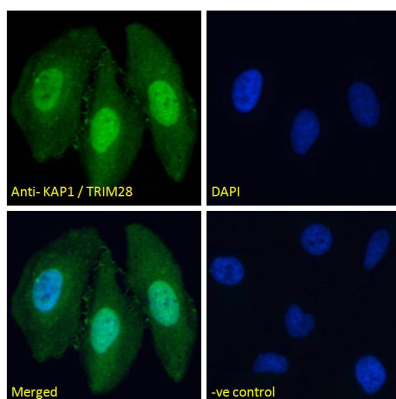
Note

For laboratory research only, not for drug, diagnostic or other use.

Bioinformation

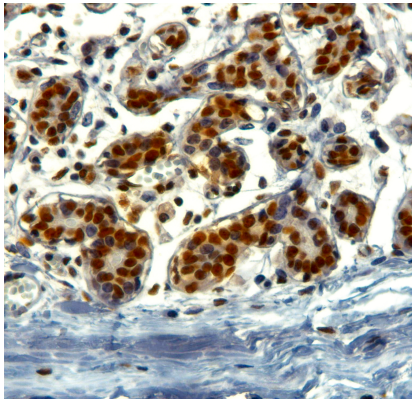
Database links	GeneID: 10155 Human Swiss-port # Q13263 Human
Gene Symbol	TRIM28
Gene Full Name	tripartite motif containing 28
Background	The protein encoded by this gene mediates transcriptional control by interaction with the Kruppel-associated box repression domain found in many transcription factors. The protein localizes to the nucleus and is thought to associate with specific chromatin regions. The protein is a member of the tripartite motif family. This tripartite motif includes three zinc-binding domains, a RING, a B-box type 1 and a B-box type 2, and a coiled-coil region. [provided by RefSeq, Jul 2008]
Research Area	Cancer antibody; Cell Biology and Cellular Response antibody; Cell Death antibody; Gene Regulation antibody
Calculated Mw	89 kDa
PTM	ATM-induced phosphorylation on Ser-824 represses sumoylation leading to the de-repression of expression of a subset of genes involved in cell cycle control and apoptosis in response to genotoxic stress. Dephosphorylation by the phosphatases, PPP1CA and PP1CB forms, allows sumoylation and expression of TRIM28 target genes. Sumoylation/desumoylation events regulate TRIM28-mediated transcriptional repression. Sumoylation is required for interaction with CHD3 and SETDB1 and the corepressor activity. Represses and is repressed by Ser-824 phosphorylation. Enhances the TRIM28 corepressor activity, inhibiting transcriptional activity of a number of genes including GADD45A and CDKN1A/p21. Lys-554, Lys-779 and Lys-804 are the major sites of sumoylation. In response to Dox-induced DNA damage, enhanced phosphorylation on Ser-824 prevents sumoylation and allows de-repression of CDKN1A/p21. Auto-ubiquitinated; enhanced by MAGEA2 and MAGEC2. Citruinated by PADI4.

Images



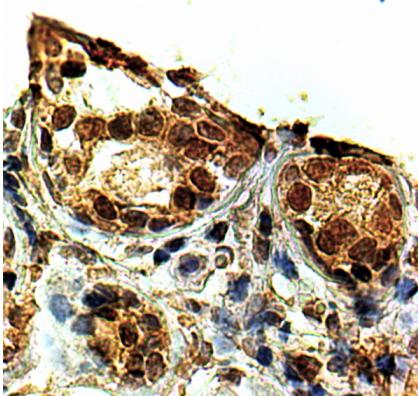
ARG63250 anti-TRIM28 / KAP1 antibody ICC/IF image

Immunofluorescence: Paraformaldehyde fixed HeLa cells permeabilized with 0.15% Triton. Cells were stained with ARG63250 anti-TRIM28 / KAP1 antibody (green) at 10 µg/ml dilution for 1 hour. DAPI (blue) for nuclear staining. Negative control: Unimmunized goat IgG (green) at 10 µg/ml dilution.



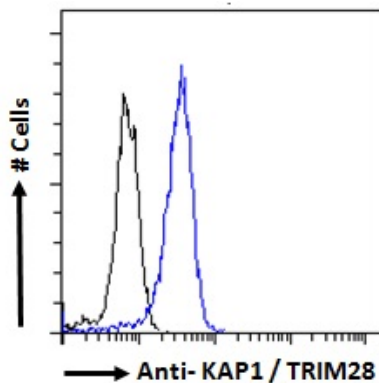
ARG63250 anti-TRIM28 / KAP1 antibody IHC-P image

Immunohistochemistry: Paraffin-embedded Human breast tissue. Antigen Retrieval: Steam tissue section in Tris/EDTA buffer (pH 9.0). The tissue section was stained with ARG63250 anti-TRIM28 / KAP1 antibody at 2 µg/ml dilution followed by HRP-staining.



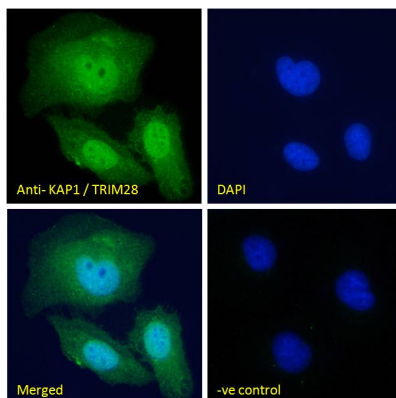
ARG63250 anti-TRIM28 / KAP1 antibody IHC-P image

Immunohistochemistry: Paraffin-embedded Human breast. (Steamed antigen retrieval with citrate buffer pH 9.0) stained with ARG63250 anti-TRIM28 / KAP1 antibody at 2 µg/ml dilution followed by HRP-staining.



ARG63250 anti-TRIM28 / KAP1 antibody FACS image

Flow Cytometry: Paraformaldehyde-fixed HeLa cells permeabilized with 0.5% Triton. Cells were stained with ARG63250 anti-TRIM28 / KAP1 antibody (blue line) at 10 µg/ml dilution for 1 hour, followed by incubation with Alexa FluorR 488 labelled secondary antibody. IgG control: Unimmunized goat IgG (black line).



ARG63250 anti-TRIM28 / KAP1 antibody ICC/IF image

Immunofluorescence: Paraformaldehyde fixed U2OS cells permeabilized with 0.15% Triton. Cells were stained with ARG63250 anti-TRIM28 / KAP1 antibody (green) at 10 µg/ml dilution for 1 hour. DAPI (blue) for nuclear staining. Negative control: Unimmunized goat IgG (green) at 10 µg/ml dilution.