

ARG63270 anti-ALS2CR1 / NIF3L1 antibody

Package: 100 µg
Store at: -20°C

Summary

Product Description	Goat Polyclonal antibody recognizes ALS2CR1 / NIF3L1
Tested Reactivity	Hu
Predict Reactivity	Ms
Tested Application	IHC-P, WB
Specificity	This antibody is expected to recognise both reported isoforms. Variants (NP_001135827.1; NP_068596.2) encode the same isoform.
Host	Goat
Clonality	Polyclonal
Isotype	IgG
Target Name	ALS2CR1 / NIF3L1
Species	Human
Immunogen	C-ILSETDRDPLQVV
Conjugation	Un-conjugated
Alternate Names	CALS-7; MDS015; NIF3-like protein 1; Amyotrophic lateral sclerosis 2 chromosomal region candidate gene 1 protein; ALS2CR1

Application Instructions

Application table	Application	Dilution
	IHC-P	2 - 4 µg/ml
	WB	0.2 - 1 µg/ml
Application Note	IHC-P: Antigen Retrieval: Steam tissue section in Citrate buffer (pH 6.0). WB: Recommend incubate at RT for 1h. * The dilutions indicate recommended starting dilutions and the optimal dilutions or concentrations should be determined by the scientist.	

Properties

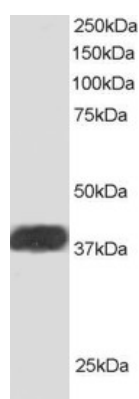
Form	Liquid
Purification	Purified from goat serum by antigen affinity chromatography.
Buffer	Tris saline (pH 7.3), 0.02% Sodium azide and 0.5% BSA.
Preservative	0.02% Sodium azide
Stabilizer	0.5% BSA
Concentration	0.5 mg/ml

Storage instruction	For continuous use, store undiluted antibody at 2-8°C for up to a week. For long-term storage, aliquot and store at -20°C or below. Storage in frost free freezers is not recommended. Avoid repeated freeze/thaw cycles. Suggest spin the vial prior to opening. The antibody solution should be gently mixed before use.
Note	For laboratory research only, not for drug, diagnostic or other use.

Bioinformation

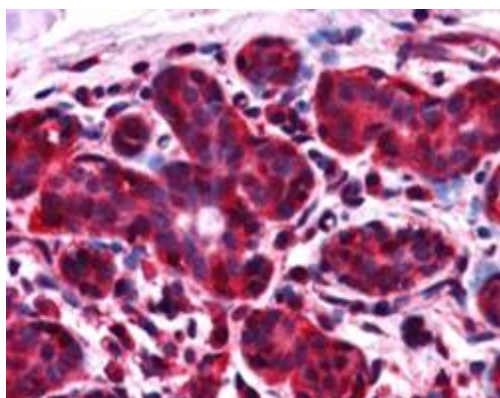
Database links	GeneID: 60491 Human Swiss-port # Q9GZT8 Human
Gene Symbol	NIF3L1
Gene Full Name	NIF3 NGG1 interacting factor 3-like 1 (S. cerevisiae)
Function	May function as a transcriptional corepressor through its interaction with COPS2, negatively regulating the expression of genes involved in neuronal differentiation. [UniProt]
Research Area	Neuroscience antibody
Calculated Mw	42 kDa

Images



ARG63270 anti-ALS2CR1 / NIF3L1 antibody WB image

Western Blot: Human Heart lysate (RIPA buffer, 30ug total protein per lane) stained with ARG63270 anti-ALS2CR1 / NIF3L1 antibody at 1ug/ml dilution.



ARG63270 anti-ALS2CR1 / NIF3L1 antibody IHC-P image

Immunohistochemistry: paraffin embedded Human Breast. (Steamed antigen retrieval with citrate buffer pH 6) stained with ARG63270 anti-ALS2CR1 / NIF3L1 antibody at 2.5 µg/ml dilution followed by AP-staining.