

ARG63277 anti-CBR1 antibody

Package: 100 µg
Store at: -20°C

Summary

Product Description	Goat Polyclonal antibody recognizes CBR1
Tested Reactivity	Hu
Tested Application	ICC/IF, IHC-P, WB
Host	Goat
Clonality	Polyclonal
Isotype	IgG
Target Name	CBR1
Species	Human
Immunogen	C-HGQFVSEKRVEQW
Conjugation	Un-conjugated
Alternate Names	Short chain dehydrogenase/reductase family 21C member 1; 15-hydroxyprostaglandin dehydrogenase [NADP]; SDR21C1; EC 1.1.1.184; NADPH-dependent carbonyl reductase 1; Prostaglandin-E; CBR; 2; hCBR1; EC 1.1.1.189; Prostaglandin 9-ketoreductase; EC 1.1.1.197; Carbonyl reductase [NADPH] 1

Application Instructions

Application table	Application	Dilution
	ICC/IF	10 µg/ml
	IHC-P	1 - 2 µg/ml
	WB	0.1 - 0.3 µg/ml
Application Note	IHC-P: Antigen Retrieval: Microwaved tissue section in Citrate buffer (pH 6.0). WB: Recommend incubate at RT for 1h. * The dilutions indicate recommended starting dilutions and the optimal dilutions or concentrations should be determined by the scientist.	

Properties

Form	Liquid
Purification	Purified from goat serum by antigen affinity chromatography.
Buffer	Tris saline (pH 7.3), 0.02% Sodium azide and 0.5% BSA.
Preservative	0.02% Sodium azide
Stabilizer	0.5% BSA
Concentration	0.5 mg/ml
Storage instruction	For continuous use, store undiluted antibody at 2-8°C for up to a week. For long-term storage, aliquot and store at -20°C or below. Storage in frost free freezers is not recommended. Avoid repeated

freeze/thaw cycles. Suggest spin the vial prior to opening. The antibody solution should be gently mixed before use.

Note

For laboratory research only, not for drug, diagnostic or other use.

Bioinformation

Database links

[GeneID: 873 Human](#)

[Swiss-port # P16152 Human](#)

Background

Carbonyl reductase is one of several monomeric, NADPH-dependent oxidoreductases having wide specificity for carbonyl compounds. This enzyme is widely distributed in human tissues. Another carbonyl reductase gene, CRB3, lies close to this gene on chromosome 21q. [provided by RefSeq, Jul 2008]

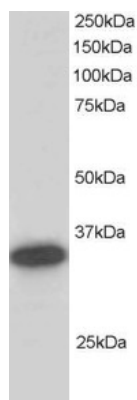
Research Area

Cell Biology and Cellular Response antibody; Metabolism antibody; Signaling Transduction antibody

Calculated Mw

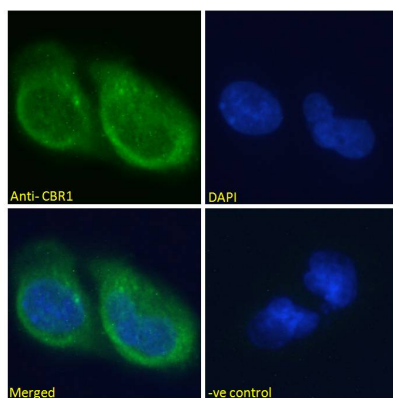
30 kDa

Images



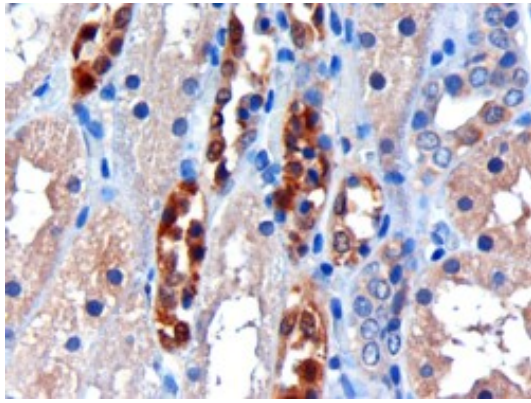
ARG63277 anti-CBR1 antibody WB image

Western Blot: Human Liver lysate (RIPA buffer, 30µg total protein per lane) stained with ARG63277 anti-CBR1 antibody at 0.2 µg/ml dilution.



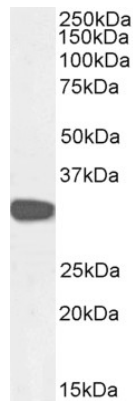
ARG63277 anti-CBR1 antibody ICC/IF image

Immunofluorescence: Paraformaldehyde fixed U251 cells permeabilized with 0.15% Triton. Cells were stained with ARG63277 anti-CBR1 antibody (green) at 10 µg/ml dilution for 1 hour. DAPI (blue) for nuclear staining. Negative control: Unimmunized goat IgG (green) at 10 µg/ml dilution.



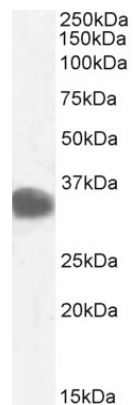
ARG63277 anti-CBR1 antibody IHC-P image

Immunohistochemistry: paraffin embedded Human Kidney.
(Microwaved antigen retrieval with citrate buffer pH 6) stained with
ARG63277 anti-CBR1 antibody at 3 µg/ml dilution followed by HRP-
staining.



ARG63277 anti-CBR1 antibody WB image

Western blot: 35 µg of U251 cell lysate (in RIPA buffer) stained with
ARG63277 anti-CBR1 antibody at 0.1 µg/ml dilution and incubated at
RT for 1 hour.



ARG63277 anti-CBR1 antibody WB image

Western blot: 35 µg of Human kidney lysate (in RIPA buffer) stained
with ARG63277 anti-CBR1 antibody at 0.1 µg/ml dilution and
incubated at RT for 1 hour.