

ARG63358 anti-FBXW2 antibody

Package: 100 µg
Store at: -20°C

Summary

Product Description	Goat Polyclonal antibody recognizes FBXW2
Tested Reactivity	Hu, Ms, Rat
Predict Reactivity	Cow, Dog, Pig
Tested Application	IHC-P, WB
Host	Goat
Clonality	Polyclonal
Isotype	IgG
Target Name	FBXW2
Species	Human
Immunogen	C-KRGSSFLAGEHPG
Conjugation	Un-conjugated
Alternate Names	FBW2; Protein MD6; Fwd2; F-box/WD repeat-containing protein 2; Md6; F-box and WD-40 domain-containing protein 2

Application Instructions

Application table	Application	Dilution
	IHC-P	2 - 3 µg/ml
	WB	0.3 - 1.5 µg/ml
Application Note	IHC-P: Antigen Retrieval: Microwaved tissue section in Citrate buffer (pH 6.0). WB: Recommend incubate at RT for 1h. * The dilutions indicate recommended starting dilutions and the optimal dilutions or concentrations should be determined by the scientist.	

Properties

Form	Liquid
Purification	Purified from goat serum by antigen affinity chromatography.
Buffer	Tris saline (pH 7.3), 0.02% Sodium azide and 0.5% BSA.
Preservative	0.02% Sodium azide
Stabilizer	0.5% BSA
Concentration	0.5 mg/ml
Storage instruction	For continuous use, store undiluted antibody at 2-8°C for up to a week. For long-term storage, aliquot and store at -20°C or below. Storage in frost free freezers is not recommended. Avoid repeated freeze/thaw cycles. Suggest spin the vial prior to opening. The antibody solution should be gently mixed

before use.

Note

For laboratory research only, not for drug, diagnostic or other use.

Bioinformation

Database links

[GeneID: 26190 Human](#)

[GeneID: 311881 Rat](#)

[Swiss-port # B2RZ17 Rat](#)

[Swiss-port # Q9UKT8 Human](#)

Background

F-box proteins are an expanding family of eukaryotic proteins characterized by an approximately 40 amino acid motif, the F box. Some F-box proteins have been shown to be critical for the ubiquitin-mediated degradation of cellular regulatory proteins. In fact, F-box proteins are one of the four subunits of ubiquitin protein ligases, called SCFs. SCF ligases bring ubiquitin conjugating enzymes to substrates that are specifically recruited by the different F-box proteins. Mammalian F-box proteins are classified into three groups based on the presence of either WD-40 repeats, leucine-rich repeats, or the presence or absence of other protein-protein interacting domains. This gene encodes the second identified member of the F-box gene family and contains multiple WD-40 repeats. [provided by RefSeq, Jul 2008]

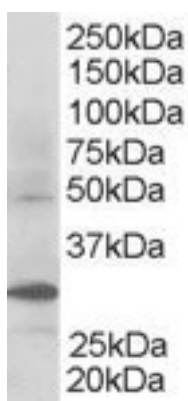
Research Area

Cell Biology and Cellular Response antibody

Calculated Mw

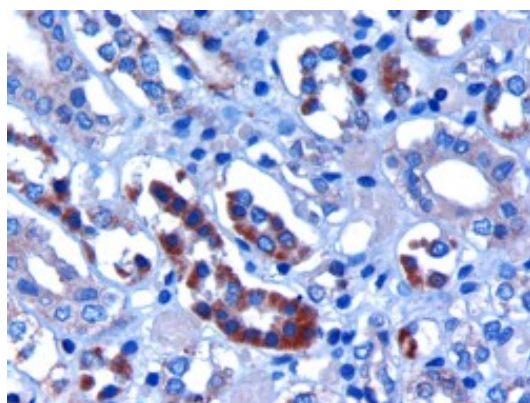
52 kDa

Images



ARG63358 anti-FBXW2 antibody WB image

Western Blot: Human Kidney lysate (RIPA buffer, 30µg total protein per lane) stained with ARG63358 anti-FBXW2 antibody at 0.3 µg/ml dilution.



ARG63358 anti-FBXW2 antibody IHC-P image

Immunohistochemistry: paraffin embedded Human Kidney. (Microwaved antigen retrieval with citrate buffer pH 6) stained with ARG63358 anti-FBXW2 antibody at 3 µg/ml dilution followed by HRP-staining.