

ARG63398 anti-PARD6A / PAR6 antibody

Package: 100 µg
Store at: -20°C

Summary

Product Description	Goat Polyclonal antibody recognizes PARD6A / PAR6
Tested Reactivity	Hu
Tested Application	FACS, IHC-P, WB
Specificity	This antibody is expected to recognise both reported isoforms (NP_058644.1; NP_001032358.1).
Host	Goat
Clonality	Polyclonal
Isotype	IgG
Target Name	PARD6A / PAR6
Species	Human
Immunogen	C-GSRIRGDGSGFSL
Conjugation	Un-conjugated
Alternate Names	Tax interaction protein 40; TIP-40; PAR-6 alpha; PAR6; PAR6alpha; PAR-6A; PAR-6; PAR6C; Partitioning defective 6 homolog alpha; TAX40

Application Instructions

Application table	Application	Dilution
	FACS	10 µg/ml
	IHC-P	5 - 10 µg/ml
	WB	1 - 3 µg/ml
Application Note	IHC-P: Antigen Retrieval: Microwaved tissue section in Tris/EDTA buffer (pH 9.0). WB: Recommend incubate at RT for 1h. * The dilutions indicate recommended starting dilutions and the optimal dilutions or concentrations should be determined by the scientist.	

Properties

Form	Liquid
Purification	Purified from goat serum by antigen affinity chromatography.
Buffer	Tris saline (pH 7.3), 0.02% Sodium azide and 0.5% BSA.
Preservative	0.02% Sodium azide
Stabilizer	0.5% BSA
Concentration	0.5 mg/ml
Storage instruction	For continuous use, store undiluted antibody at 2-8°C for up to a week. For long-term storage, aliquot and store at -20°C or below. Storage in frost free freezers is not recommended. Avoid repeated

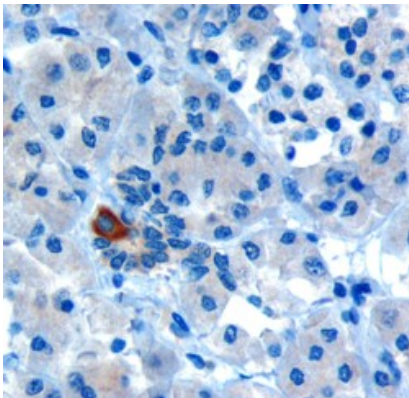
freeze/thaw cycles. Suggest spin the vial prior to opening. The antibody solution should be gently mixed before use.

Note For laboratory research only, not for drug, diagnostic or other use.

Bioinformation

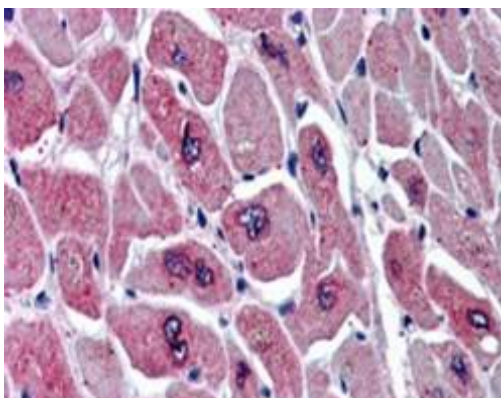
Database links	GeneID: 50855 Human Swiss-port # Q9NPB6 Human
Background	This gene is a member of the PAR6 family and encodes a protein with a PSD95/Discs-large/ZO1 (PDZ) domain and a semi-Cdc42/Rac interactive binding (CRIB) domain. This cell membrane protein is involved in asymmetrical cell division and cell polarization processes as a member of a multi-protein complex. The protein also has a role in the epithelial-to-mesenchymal transition (EMT) that characterizes the invasive phenotype associated with metastatic carcinomas. Alternate transcriptional splice variants, encoding different isoforms, have been characterized. [provided by RefSeq, Jul 2008]
Research Area	Cancer antibody; Cell Biology and Cellular Response antibody; Developmental Biology antibody; Gene Regulation antibody; Signaling Transduction antibody
Calculated Mw	37 kDa
PTM	Phosphorylated by the TGF-beta receptor.

Images



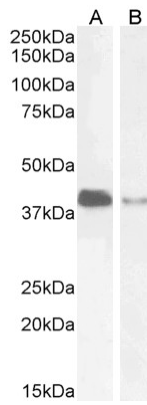
ARG63398 anti-PARD6A / PAR6 antibody IHC-P image

Immunohistochemistry: Paraffin embedded Human Pancreas. (Microwaved antigen retrieval with Tris/EDTA buffer pH9) stained with ARG63398 anti-PARD6A / PAR6 antibody at 10 µg/ml dilution followed by HRP-staining.



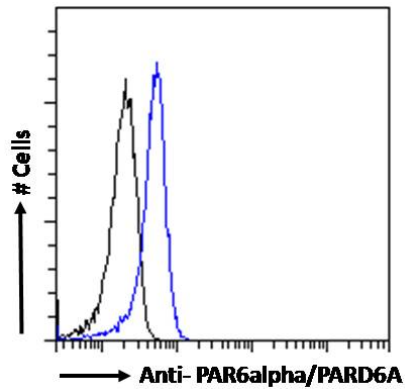
ARG63398 anti-PARD6A / PAR6 antibody IHC-P image

Immunohistochemistry: Paraffin embedded Human Heart. (Steamed antigen retrieval with citrate buffer pH 6) stained with ARG63398 anti-PARD6A / PAR6 antibody at 5 µg/ml dilution followed by AP-staining.



ARG63398 anti-PARD6A / PAR6 antibody WB image

Western blot: 35 µg of Jurkat (A) and U251 (B) cell lysates (in RIPA buffer) stained with ARG63398 anti-PARD6A / PAR6 antibody at 2 µg/ml dilution and incubated at RT for 1 hour.



ARG63398 anti-PARD6A / PAR6 antibody FACS image

Flow Cytometry: Paraformaldehyde-fixed Jurkat cells permeabilized with 0.5% Triton. Cells were stained with ARG63398 anti-PARD6A / PAR6 antibody (blue line) at 10 µg/ml dilution for 1 hour, followed by incubation with Alexa FluorR 488 labelled secondary antibody. IgG control: Unimmunized goat IgG (black line).