

ARG63400 anti-KPNA3 / IPOA4 antibody

Package: 100 µg
Store at: -20°C

Summary

Product Description	Goat Polyclonal antibody recognizes KPNA3 / IPOA4
Tested Reactivity	Hu
Predict Reactivity	Ms, Rat, Cow, Dog
Tested Application	WB
Host	Goat
Clonality	Polyclonal
Isotype	IgG
Target Name	KPNA3 / IPOA4
Species	Human
Immunogen	C-DPTANLQTKENF
Conjugation	Un-conjugated
Alternate Names	Importin subunit alpha-4; SRP4; SRP1; Qip2; SRP1gamma; hSRP1; IPOA4; Karyopherin subunit alpha-3; SRP1-gamma; Importin alpha Q2

Application Instructions

Application table	Application	Dilution
	WB	0.1 - 0.3 µg/ml
Application Note	WB: Recommend incubate at RT for 1h. * The dilutions indicate recommended starting dilutions and the optimal dilutions or concentrations should be determined by the scientist.	

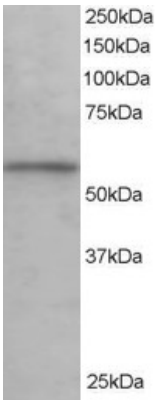
Properties

Form	Liquid
Purification	Purified from goat serum by antigen affinity chromatography.
Buffer	Tris saline (pH 7.3), 0.02% Sodium azide and 0.5% BSA.
Preservative	0.02% Sodium azide
Stabilizer	0.5% BSA
Concentration	0.5 mg/ml
Storage instruction	For continuous use, store undiluted antibody at 2-8°C for up to a week. For long-term storage, aliquot and store at -20°C or below. Storage in frost free freezers is not recommended. Avoid repeated freeze/thaw cycles. Suggest spin the vial prior to opening. The antibody solution should be gently mixed before use.
Note	For laboratory research only, not for drug, diagnostic or other use.

Bioinformation

Database links	GeneID: 3839 Human Swiss-port # O00505 Human
Background	The transport of molecules between the nucleus and the cytoplasm in eukaryotic cells is mediated by the nuclear pore complex (NPC), which consists of 60-100 proteins. Small molecules (up to 70 kD) can pass through the nuclear pore by nonselective diffusion while larger molecules are transported by an active process. The protein encoded by this gene belongs to the importin alpha family, and is involved in nuclear protein import. [provided by RefSeq, Jan 2009]
Research Area	Controls and Markers antibody; Signaling Transduction antibody
Calculated Mw	58 kDa

Images



ARG63400 anti-KPNA3 / IPOA4 antibody WB image

Western Blot: Human Testis lysate (RIPA buffer, 35 µg total protein per lane) stained with ARG63400 anti-KPNA3 / IPOA4 antibody at 0.1 µg/ml dilution.



ARG63400 anti-KPNA3 / IPOA4 antibody WB image

Western blot: 35 µg of HeLa cell lysate (in RIPA buffer) stained with ARG63400 anti-KPNA3 / IPOA4 antibody at 0.1 µg/ml dilution and incubated at RT for 1 hour.