

## ARG63413 anti-RANBP16 / Exportin 7 antibody

Package: 100 µg  
Store at: -20°C

### Summary

Product Description	Goat Polyclonal antibody recognizes RANBP16 / Exportin 7
Tested Reactivity	Hu
Predict Reactivity	Ms, Cow, Dog, Pig
Tested Application	IHC-P, WB
Specificity	This antibody is expected to recognise all the reported isoforms (NP_001093631.1; NP_055839; NP_001093632.1).
Host	Goat
Clonality	Polyclonal
Isotype	IgG
Target Name	RANBP16 / Exportin 7
Species	Human
Immunogen	C-NSTYGVNSNDMMMS
Conjugation	Un-conjugated
Alternate Names	Exportin-7; Exp7; EXP7; Ran-binding protein 16; RANBP16

### Application Instructions

Application table	Application	Dilution
	IHC-P	5 µg/ml
	WB	0.5 - 1 µg/ml
Application Note	WB: Recommend incubate at RT for 1h. IHC-P: Antigen Retrieval: Steam tissue section in Citrate buffer (pH 6.0). * The dilutions indicate recommended starting dilutions and the optimal dilutions or concentrations should be determined by the scientist.	

### Properties

Form	Liquid
Purification	Purified from goat serum by antigen affinity chromatography.
Buffer	Tris saline (pH 7.3), 0.02% Sodium azide and 0.5% BSA.
Preservative	0.02% Sodium azide
Stabilizer	0.5% BSA
Concentration	0.5 mg/ml
Storage instruction	For continuous use, store undiluted antibody at 2-8°C for up to a week. For long-term storage, aliquot and store at -20°C or below. Storage in frost free freezers is not recommended. Avoid repeated

freeze/thaw cycles. Suggest spin the vial prior to opening. The antibody solution should be gently mixed before use.

#### Note

For laboratory research only, not for drug, diagnostic or other use.

## Bioinformation

#### Database links

[GeneID: 23039 Human](#)

[Swiss-port # Q9UIA9 Human](#)

#### Background

The transport of protein and large RNAs through the nuclear pore complexes (NPC) is an energy-dependent and regulated process. The import of proteins with a nuclear localization signal (NLS) is accomplished by recognition of one or more clusters of basic amino acids by the importin-alpha/beta complex; see MIM 600685 and MIM 602738. The small GTPase RAN (MIM 601179) plays a key role in NLS-dependent protein import. RAN-binding protein-16 is a member of the importin-beta superfamily of nuclear transport receptors.[supplied by OMIM, Jul 2002]

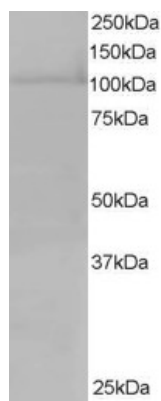
#### Research Area

Controls and Markers antibody; Signaling Transduction antibody

#### Calculated Mw

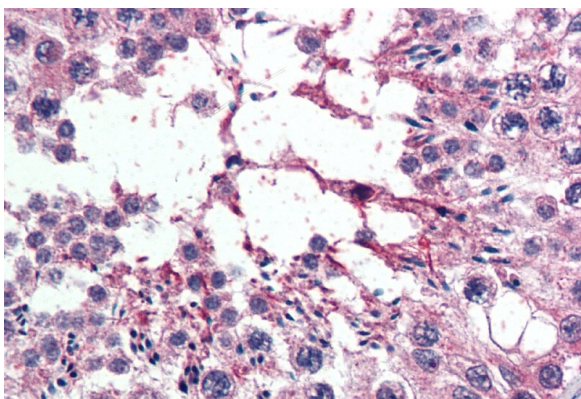
124 kDa

## Images



ARG63413 anti-RANBP16 / Exportin 7 antibody WB image

Western Blot: HeLa lysate (RIPA buffer, 35 µg total protein per lane) stained with ARG63413 anti-RANBP16 / Exportin 7 antibody at 0.5 µg/ml dilution.



ARG63413 anti-RANBP16 / Exportin 7 antibody IHC-P image

Immunohistochemistry: Paraffin-embedded Human testis tissue. Antigen Retrieval: Steam tissue section in Citrate buffer (pH 6.0). The tissue section was stained with ARG63413 anti-RANBP16 / Exportin 7 antibody at 5 µg/ml dilution followed by AP-staining.