

ARG63425
anti-SH3BP1 antibodyPackage: 100 µg
Store at: -20°C**Summary**

Product Description	Goat Polyclonal antibody recognizes SH3BP1
Tested Reactivity	Hu
Tested Application	ICC/IF, IHC-P, WB
Host	Goat
Clonality	Polyclonal
Isotype	IgG
Target Name	SH3BP1
Species	Human
Immunogen	C-PQPRPRSLAETN
Conjugation	Un-conjugated
Alternate Names	SH3 domain-binding protein 1; 3BP-1; ARHGAP43

Application Instructions

Application table	Application	Dilution
	ICC/IF	Assay - dependent
	IHC-P	0.3 - 1 µg/ml
	WB	1 - 3 µg/ml
Application Note	IHC-P: Antigen Retrieval: Microwaved tissue section in Citrate buffer (pH 6.0). WB: Recommend incubate at RT for 1h. * The dilutions indicate recommended starting dilutions and the optimal dilutions or concentrations should be determined by the scientist.	

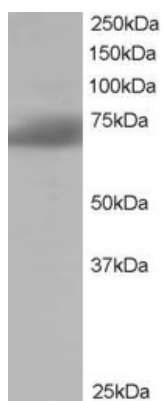
Properties

Form	Liquid
Purification	Purified from goat serum by antigen affinity chromatography.
Buffer	Tris saline (pH 7.3), 0.02% Sodium azide and 0.5% BSA.
Preservative	0.02% Sodium azide
Stabilizer	0.5% BSA
Concentration	0.5 mg/ml
Storage instruction	For continuous use, store undiluted antibody at 2-8°C for up to a week. For long-term storage, aliquot and store at -20°C or below. Storage in frost free freezers is not recommended. Avoid repeated freeze/thaw cycles. Suggest spin the vial prior to opening. The antibody solution should be gently mixed before use.

Bioinformation

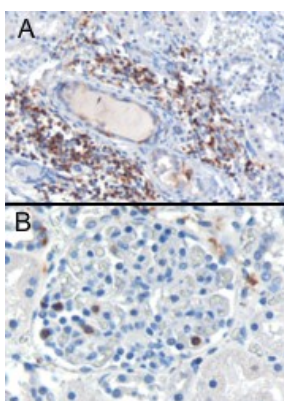
Database links	GeneID: 23616 Human Swiss-port # Q9Y3L3 Human
Gene Symbol	SH3BP1
Gene Full Name	SH3-domain binding protein 1
Function	Binds differentially to the SH3 domains of certain proteins of signal transduction pathways. This protein binds preferentially to the ABL1 proto-oncogene, SRC and GRB2. Shows GAP activity for Rac-related proteins but not for Rho- or Ras-related proteins. It inhibits PDGF-induced membrane ruffling mediated by Rac (By similarity). [UniProt]
Research Area	Signaling Transduction antibody
Calculated Mw	76 kDa

Images



ARG63425 anti-SH3BP1 antibody WB image

Western Blot: Human Brain lysate (RIPA buffer, 35 µg total protein per lane) stained with ARG63425 anti-SH3BP1 antibody at 1 µg/ml dilution.



ARG63425 anti-SH3BP1 antibody IHC-P image

Immunohistochemistry: paraffin embedded Human Kidney. Cytoplasmic staining of lymphocytes A) in the interstitial parenchyma of the kidney. B) in a glomerulus of the kidney. (Microwaved antigen retrieval with citrate buffer pH 6) stained with ARG63425 anti-SH3BP1 antibody at 0.3 µg/ml dilution followed by HRP-staining.