

ARG63448 anti-PPP2R5A antibody

Package: 100 µg
Store at: -20°C

Summary

Product Description	Goat Polyclonal antibody recognizes PPP2R5A
Tested Reactivity	Hu
Predict Reactivity	Cow, Rat, Dog, Pig
Tested Application	IHC-P, WB
Host	Goat
Clonality	Polyclonal
Isotype	IgG
Target Name	PPP2R5A
Species	Human
Immunogen	C-AYNMHSILSNTSAE
Conjugation	Un-conjugated
Alternate Names	PR61A; B56A; PP2A B subunit isoform R5-alpha; PR61alpha; PP2A B subunit isoform PR61-alpha; PP2A B subunit isoform B ¹ -alpha; Serine/threonine-protein phosphatase 2A 56 kDa regulatory subunit alpha isoform; PP2A B subunit isoform B56-alpha

Application Instructions

Application table	Application	Dilution
	IHC-P	5 - 10 µg/ml
	WB	0.5 - 2 µg/ml
Application Note	IHC-P: Antigen Retrieval: Steam tissue section in Citrate buffer (pH 6.0). WB: Recommend incubate at RT for 1h. * The dilutions indicate recommended starting dilutions and the optimal dilutions or concentrations should be determined by the scientist.	

Properties

Form	Liquid
Purification	Purified from goat serum by antigen affinity chromatography.
Buffer	Tris saline (pH 7.3), 0.02% Sodium azide and 0.5% BSA.
Preservative	0.02% Sodium azide
Stabilizer	0.5% BSA
Concentration	0.5 mg/ml
Storage instruction	For continuous use, store undiluted antibody at 2-8°C for up to a week. For long-term storage, aliquot and store at -20°C or below. Storage in frost free freezers is not recommended. Avoid repeated

freeze/thaw cycles. Suggest spin the vial prior to opening. The antibody solution should be gently mixed before use.

Note

For laboratory research only, not for drug, diagnostic or other use.

Bioinformation

Database links

[GeneID: 5525 Human](#)

[Swiss-port # Q15172 Human](#)

Background

The product of this gene belongs to the phosphatase 2A regulatory subunit B family. Protein phosphatase 2A is one of the four major Ser/Thr phosphatases, and it is implicated in the negative control of cell growth and division. It consists of a common heteromeric core enzyme, which is composed of a catalytic subunit and a constant regulatory subunit, that associates with a variety of regulatory subunits. The B regulatory subunit might modulate substrate selectivity and catalytic activity. This gene encodes an alpha isoform of the regulatory subunit B56 subfamily. Alternative transcript variants encoding distinct isoforms have been found for this gene. [provided by RefSeq, Dec 2010]

Research Area

Neuroscience antibody; Signaling Transduction antibody

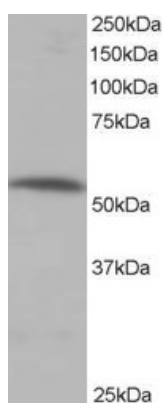
Calculated Mw

56 kDa

PTM

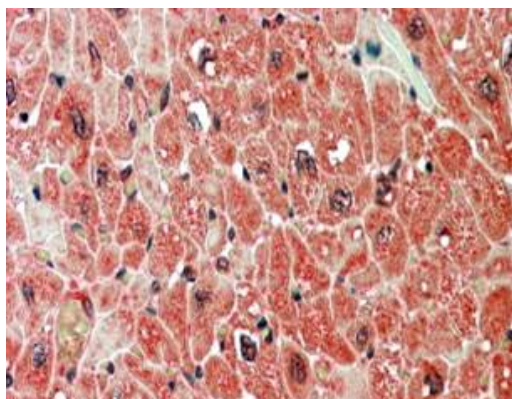
Phosphorylated on serine residues.

Images



ARG63448 anti-PPP2R5A antibody WB image

Western Blot: human muscle lysate (RIPA buffer, 35 µg total protein per lane) stained with ARG63448 anti-PPP2R5A antibody at 0.5 µg/ml dilution.



ARG63448 anti-PPP2R5A antibody IHC-P image

Immunohistochemistry: paraffin embedded Human Heart. (Steamed antigen retrieval with citrate buffer pH 6) stained with ARG63448 anti-PPP2R5A antibody at 5 µg/ml dilution followed by AP-staining.