

ARG63453 anti-CYBR / PSCDBP antibody

Package: 100 µg
Store at: -20°C

Summary

Product Description	Goat Polyclonal antibody recognizes CYBR / PSCDBP
Tested Reactivity	Hu
Predict Reactivity	Dog, Pig
Tested Application	ICC/IF, WB
Host	Goat
Clonality	Polyclonal
Isotype	IgG
Target Name	CYBR / PSCDBP
Species	Human
Immunogen	SLQRLLQHSSNGN-C
Conjugation	Un-conjugated
Alternate Names	CYBR; B3-1; Cytohesin-associated scaffolding protein; Pleckstrin homology Sec7 and coiled-coil domains-binding protein; Cbp HE; PSCDBP; CASP; Cytohesin-binding protein HE; Cytohesin-interacting protein; CYTHIP; Cytohesin binder and regulator; HE

Application Instructions

Application table	Application	Dilution
	ICC/IF	10 µg/ml
	WB	0.3 - 1 µg/ml
Application Note	WB: Recommend incubate at RT for 1h. * The dilutions indicate recommended starting dilutions and the optimal dilutions or concentrations should be determined by the scientist.	

Properties

Form	Liquid
Purification	Purified from goat serum by antigen affinity chromatography.
Buffer	Tris saline (pH 7.3), 0.02% Sodium azide and 0.5% BSA.
Preservative	0.02% Sodium azide
Stabilizer	0.5% BSA
Concentration	0.5 mg/ml
Storage instruction	For continuous use, store undiluted antibody at 2-8°C for up to a week. For long-term storage, aliquot and store at -20°C or below. Storage in frost free freezers is not recommended. Avoid repeated freeze/thaw cycles. Suggest spin the vial prior to opening. The antibody solution should be gently mixed

before use.

Note

For laboratory research only, not for drug, diagnostic or other use.

Bioinformation

Database links

[GeneID: 9595 Human](#)

[Swiss-port # O60759 Human](#)

Background

The protein encoded by this gene contains 2 leucine zipper domains and a putative C-terminal nuclear targeting signal, but does not have any hydrophobic regions. This protein is expressed weakly in resting NK and T cells. The encoded protein modulates the activation of ARF genes by CYTH1. This protein interacts with CYTH1 and SNX27 proteins and may act to sequester CYTH1 protein in the cytoplasm.[provided by RefSeq, Aug 2008]

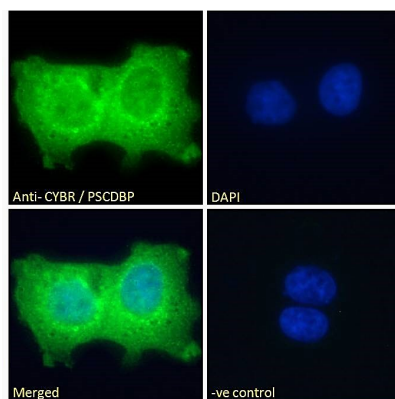
Research Area

Gene Regulation antibody; Immune System antibody; Neuroscience antibody; Signaling Transduction antibody

Calculated Mw

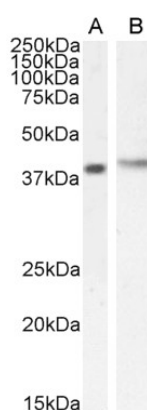
40 kDa

Images



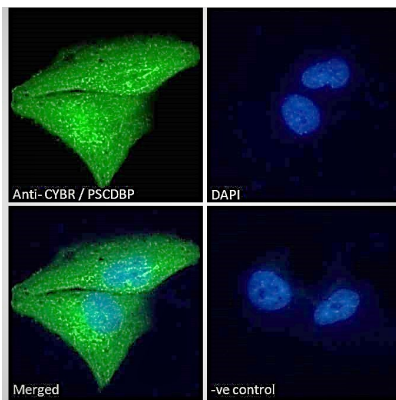
ARG63453 anti-CYBR / PSCDBP antibody ICC/IF image

Immunofluorescence: Paraformaldehyde fixed A431 cells permeabilized with 0.15% Triton. Cells were stained with ARG63453 anti-CYBR / PSCDBP antibody (green) at 10 µg/ml dilution for 1 hour. DAPI (blue) for nuclear staining. Negative control: Unimmunized goat IgG (green) at 10 µg/ml dilution.



ARG63453 anti-CYBR / PSCDBP antibody WB image

Western blot: 35 µg of Jurkat (A) and MOLT-4 (B) cell lysates (in RIPA buffer) stained with ARG63453 anti-CYBR / PSCDBP antibody at 0.5 µg/ml (A) and 1 µg/ml (B) dilutions and incubated at RT for 1 hour.



ARG63453 anti-CYBR / PSCDBP antibody ICC/IF image

Immunofluorescence: Paraformaldehyde fixed U251 cells permeabilized with 0.15% Triton. Cells were stained with ARG63453 anti-CYBR / PSCDBP antibody (green) at 10 µg/ml dilution for 1 hour. DAPI (blue) for nuclear staining. Negative control: Unimmunized goat IgG (green) at 10 µg/ml dilution.