

ARG63462 anti-ELF1 antibody

Package: 100 µg
Store at: -20°C

Summary

Product Description	Goat Polyclonal antibody recognizes ELF1
Tested Reactivity	Hu, Ms
Tested Application	IHC-P, WB
Specificity	This antibody is expected to recognise both reported isoforms.
Host	Goat
Clonality	Polyclonal
Isotype	IgG
Target Name	ELF1
Species	Human
Immunogen	C-AMKQNELLEPNSF
Conjugation	Un-conjugated
Alternate Names	E74-like factor 1; ETS-related transcription factor Elf-1

Application Instructions

Application table	Application	Dilution
	IHC-P	2.5 µg/ml
	WB	0.03 - 0.3 µg/ml
Application Note	WB: Recommend incubate at RT for 1h. IHC-P: Antigen Retrieval: Steam tissue section in Citrate buffer (pH 6.0). * The dilutions indicate recommended starting dilutions and the optimal dilutions or concentrations should be determined by the scientist.	

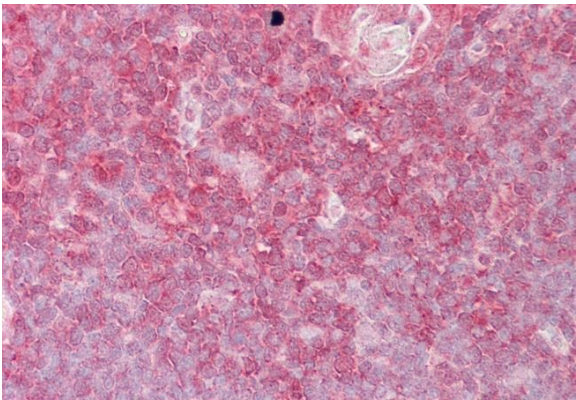
Properties

Form	Liquid
Purification	Purified from goat serum by antigen affinity chromatography.
Buffer	Tris saline (pH 7.3), 0.02% Sodium azide and 0.5% BSA.
Preservative	0.02% Sodium azide
Stabilizer	0.5% BSA
Concentration	0.5 mg/ml
Storage instruction	For continuous use, store undiluted antibody at 2-8°C for up to a week. For long-term storage, aliquot and store at -20°C or below. Storage in frost free freezers is not recommended. Avoid repeated freeze/thaw cycles. Suggest spin the vial prior to opening. The antibody solution should be gently mixed before use.

Bioinformation

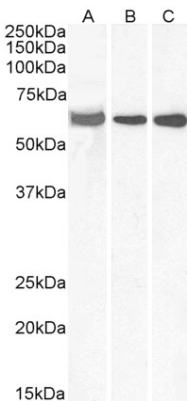
Database links	GeneID: 13709 Mouse GeneID: 1997 Human Swiss-port # P32519 Human Swiss-port # Q60775 Mouse
Background	This gene encodes an E26 transformation-specific related transcription factor. The encoded protein is primarily expressed in lymphoid cells and acts as both an enhancer and a repressor to regulate transcription of various genes. Alternative splicing results in multiple transcript variants. [provided by RefSeq, Feb 2009]
Research Area	Gene Regulation antibody
Calculated Mw	67 kDa

Images



ARG63462 anti-ELF1 antibody IHC-P image

Immunohistochemistry: Paraffin-embedded Human thymus tissue. Antigen Retrieval: Steam tissue section in Citrate buffer (pH 6.0). The tissue section was stained with ARG63462 anti-ELF1 antibody at 2.5 µg/ml dilution followed by AP-staining.



ARG63462 anti-ELF1 antibody WB image

Western blot: 35 µg of Human lymph node (A), Human tonsil (B) and Mouse thymus (C) lysates (in RIPA buffer) stained with ARG63462 anti-ELF1 antibody at 0.3 µg/ml dilution and incubated at RT for 1 hour.



ARG63462 anti-ELF1 antibody WB image

Western blot: 35 µg of Jurkat cell lysate (in RIPA buffer) stained with ARG63462 anti-ELF1 antibody at 0.1 µg/ml dilution and incubated at RT for 1 hour.