

## ARG63466 anti-CREB3L4 / AIBZIP antibody

Package: 100 µg  
Store at: -20°C

### Summary

|                     |   |
|---------------------|---|
| Product Description | Goat Polyclonal antibody recognizes CREB3L4 / AIBZIP  |
| Tested Reactivity   | Hu  |
| Tested Application  | IHC-P, WB   |
| Host                | Goat  |
| Clonality           | Polyclonal  |
| Isotype             | IgG   |
| Target Name         | CREB3L4 / AIBZIP  |
| Species             | Human   |
| Immunogen           | C-PSGRIRSVLHADEM  |
| Conjugation         | Un-conjugated   |
| Alternate Names     | Transcript induced in spermiogenesis protein 40; cAMP-responsive element-binding protein 3-like protein 4; Androgen-induced basic leucine zipper protein; Cyclic AMP-responsive element-binding protein 3-like protein 4; cAMP-responsive element-binding protein 4; CREB4; CREB3; hJAL; Tisp40; ATCE1; JAL; Cyclic AMP-responsive element-binding protein 4; Attaching to CRE-like 1; CREB-4; AibZIP; AIBZIP |

### Application Instructions

| Application table | Application  | Dilution      |
|-------------------|--|---------------|
|                   | IHC-P  | 2 - 4 µg/ml   |
|                   | WB   | 0.5 - 2 µg/ml |
| Application Note  | IHC-P: Antigen Retrieval: Steam tissue section in Citrate buffer (pH 6.0).<br>WB: Recommend incubate at RT for 1h.<br>* The dilutions indicate recommended starting dilutions and the optimal dilutions or concentrations should be determined by the scientist. |               |

### Properties

|                     |   |
|---------------------|---|
| Form                | Liquid  |
| Purification        | Purified from goat serum by antigen affinity chromatography.  |
| Buffer              | Tris saline (pH 7.3), 0.02% Sodium azide and 0.5% BSA.  |
| Preservative        | 0.02% Sodium azide  |
| Stabilizer          | 0.5% BSA  |
| Concentration       | 0.5 mg/ml   |
| Storage instruction | For continuous use, store undiluted antibody at 2-8°C for up to a week. For long-term storage, aliquot and store at -20°C or below. Storage in frost free freezers is not recommended. Avoid repeated |

freeze/thaw cycles. Suggest spin the vial prior to opening. The antibody solution should be gently mixed before use.

#### Note

For laboratory research only, not for drug, diagnostic or other use.

## Bioinformation

#### Database links

[GeneID: 148327 Human](#)

[Swiss-port # Q8TEY5 Human](#)

#### Background

This gene encodes a CREB (cAMP responsive element binding) protein with a transmembrane domain which localizes it to the ER membrane. The encoded protein is a transcriptional activator which contains a dimerization domain, and this protein may function in a number of processing pathways including protein processing. Multiple transcript variants encoding different isoforms have been found for this gene. [provided by RefSeq, Dec 2011]

#### Research Area

Gene Regulation antibody

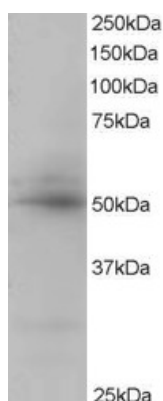
#### Calculated Mw

43 kDa

#### PTM

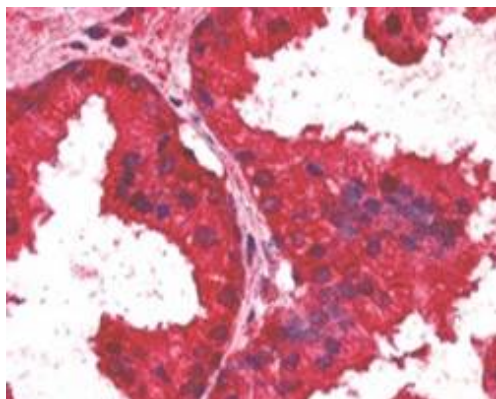
N-glycosylated in the C-terminal region.  
Controlled by regulated intramembrane proteolysis (RIP). Following ER stress a fragment containing the cytoplasmic transcription factor domain is released by proteolysis. The cleavage seems to be performed sequentially by site-1 and site-2 proteases (PS1 and PS2). PS1 cleavage may be suppressed by a determinant in the C-terminal region (By similarity).

## Images



ARG63466 anti-CREB3L4 / AIBZIP antibody WB image

Western blot: Human Placenta lysate (RIPA buffer, 35 µg total protein per lane) stained with ARG63466 anti-CREB3L4 / AIBZIP antibody at 0.5 µg/ml dilution.



ARG63466 anti-CREB3L4 / AIBZIP antibody IHC-P image

Immunohistochemistry: Paraffin embedded Human Prostate. (Steamed antigen retrieval with citrate buffer pH 6) stained with ARG63466 anti-CREB3L4 / AIBZIP antibody at 2.5 µg/ml dilution followed by AP-staining.