

ARG63475 anti-Melanophilin antibody

Package: 100 µg
Store at: -20°C

Summary

Product Description	Goat Polyclonal antibody recognizes Melanophilin
Tested Reactivity	Ms
Predict Reactivity	Rat
Tested Application	ICC/IF, WB
Host	Goat
Clonality	Polyclonal
Isotype	IgG
Target Name	Melanophilin
Species	Mouse
Immunogen	C-ARHIFAKPVMAQQP
Conjugation	Un-conjugated
Alternate Names	Melanophilin; Exophilin-3; Slp homolog lacking C2 domains a; SlaC2-a; Synaptotagmin-like protein 2a; SLAC2-A

Application Instructions

Application table	Application	Dilution
	ICC/IF	0.5 µg/ml
	WB	0.5 - 2 µg/ml
Application Note	WB: Please note that this product may require overnight incubation of primary and high protein loads. * The dilutions indicate recommended starting dilutions and the optimal dilutions or concentrations should be determined by the scientist.	

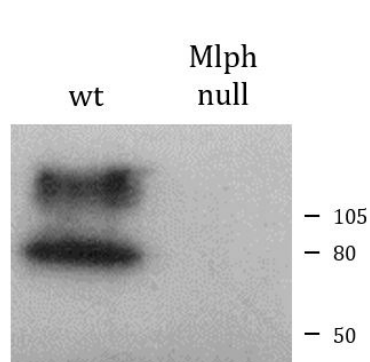
Properties

Form	Liquid
Purification	Purified from goat serum by antigen affinity chromatography.
Buffer	Tris saline (pH 7.3), 0.02% Sodium azide and 0.5% BSA.
Preservative	0.02% Sodium azide
Stabilizer	0.5% BSA
Concentration	0.5 mg/ml
Storage instruction	For continuous use, store undiluted antibody at 2-8°C for up to a week. For long-term storage, aliquot and store at -20°C or below. Storage in frost free freezers is not recommended. Avoid repeated freeze/thaw cycles. Suggest spin the vial prior to opening. The antibody solution should be gently mixed before use.

Bioinformation

Database links	GeneID: 171531 Mouse Swiss-port # Q91V27 Mouse
Gene Symbol	Mlph
Gene Full Name	melanophilin
Background	This gene encodes a member of the exophilin subfamily of Rab effector proteins. The protein forms a ternary complex with the small Ras-related GTPase Rab27A in its GTP-bound form and the motor protein myosin Va. A similar protein complex in mouse functions to tether pigment-producing organelles called melanosomes to the actin cytoskeleton in melanocytes, and is required for visible pigmentation in the hair and skin. A mutation in this gene results in Griscelli syndrome type 3, which is characterized by a silver-gray hair color and abnormal pigment distribution in the hair shaft. Several alternatively spliced transcript variants encoding different isoforms have been found for this gene. [provided by RefSeq, Jul 2013]
Function	Rab effector protein involved in melanosome transport. Serves as link between melanosome-bound RAB27A and the motor protein MYO5A. [UniProt]
Research Area	Neuroscience antibody; Signaling Transduction antibody
Calculated Mw	66 kDa

Images



ARG63475 anti-Melanophilin antibody WB image

Western blot: 200 µg of total melanocyte PNS of wild-type and leaden (Mlph null) mice. The blots were stained with ARG63475 anti-Melanophilin antibody at 0.5 µg/ml dilution. The upper band may represent the stacking-separating gel interface.