

## ARG63482 anti-DOK3 antibody

Package: 100 µg  
Store at: -20°C

### Summary

Product Description	Goat Polyclonal antibody recognizes DOK3
Tested Reactivity	Hu
Predict Reactivity	Ms, Rat, Cow
Tested Application	IHC-P, WB
Host	Goat
Clonality	Polyclonal
Isotype	IgG
Target Name	DOK3
Species	Human
Immunogen	TRERRKGPAAPCDRP
Conjugation	Un-conjugated
Alternate Names	Docking protein 3; Downstream of tyrosine kinase 3; DOKL

### Application Instructions

Application table	Application	Dilution
	IHC-P	Assay - dependent
	WB	2 - 6 µg/ml
Application Note	WB: Recommend incubate at RT for 1h. IHC-P: Antigen Retrieval: Steam tissue section in Citrate buffer (pH 6.0). * The dilutions indicate recommended starting dilutions and the optimal dilutions or concentrations should be determined by the scientist.	

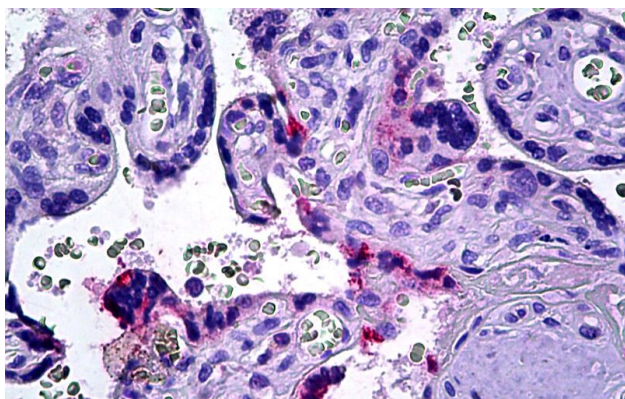
### Properties

Form	Liquid
Purification	Purified from goat serum by antigen affinity chromatography.
Buffer	Tris saline (pH 7.3), 0.02% Sodium azide and 0.5% BSA.
Preservative	0.02% Sodium azide
Stabilizer	0.5% BSA
Concentration	0.5 mg/ml
Storage instruction	For continuous use, store undiluted antibody at 2-8°C for up to a week. For long-term storage, aliquot and store at -20°C or below. Storage in frost free freezers is not recommended. Avoid repeated freeze/thaw cycles. Suggest spin the vial prior to opening. The antibody solution should be gently mixed before use.

## Bioinformation

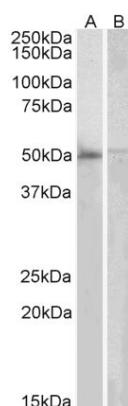
Database links	<a href="#">GeneID: 79930 Human</a> <a href="#">Swiss-port # Q7L591 Human</a>
Gene Symbol	DOK3
Gene Full Name	docking protein 3
Function	DOK proteins are enzymatically inert adaptor or scaffolding proteins. They provide a docking platform for the assembly of multimolecular signaling complexes. DOK3 is a negative regulator of JNK signaling in B-cells through interaction with INPP5D/SHIP1. May modulate ABL1 function (By similarity). [UniProt]
Research Area	Cancer antibody; Signaling Transduction antibody
Calculated Mw	53 kDa
PTM	Constitutively tyrosine-phosphorylated. On IL2 stimulation, phosphorylated on C-terminal tyrosine residues possibly by Src kinases. Can also be phosphorylated by ABL1 kinase (By similarity).

## Images



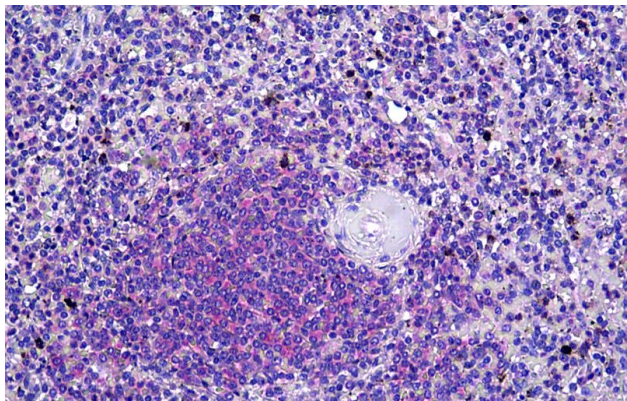
ARG63482 anti-DOK3 antibody IHC-P image

Immunohistochemistry: Paraffin-embedded Human placenta tissue. Antigen Retrieval: Steam tissue section in Citrate buffer (pH 6.0). The tissue section was stained with ARG63482 anti-DOK3 antibody at 6.125 µg/ml dilution followed by AP-staining.



ARG63482 anti-DOK3 antibody WB image

Western blot: 35 µg of Human bone marrow (A) and Peripheral blood lymphocyte (B) lysates (in RIPA buffer) stained with ARG63482 anti-DOK3 antibody at 2 µg/ml dilution and incubated at RT for 1 hour.



ARG63482 anti-DOK3 antibody IHC-P image

Immunohistochemistry: Paraffin-embedded Human spleen tissue.  
Antigen Retrieval: Steam tissue section in Citrate buffer (pH 6.0). The tissue section was stained with ARG63482 anti-DOK3 antibody at 6.125 µg/ml dilution followed by AP-staining.