

ARG63525 anti-CDC42 binding kinase alpha antibody

Package: 100 µg
Store at: -20°C

Summary

Product Description	Goat Polyclonal antibody recognizes CDC42 binding kinase alpha
Tested Reactivity	Hu
Predict Reactivity	Ms, Rat, Cow, Dog
Tested Application	IHC-P
Specificity	This antibody is expected to recognise both reported Human isoforms (NP_055641.3 and NP_003598.2).
Host	Goat
Clonality	Polyclonal
Isotype	IgG
Target Name	CDC42 binding kinase alpha
Species	Human
Immunogen	SGEVRLRQLEQFI-C
Conjugation	Un-conjugated
Alternate Names	DMPK-like alpha; CDC42-binding protein kinase alpha; PK428; Serine/threonine-protein kinase MRCK alpha; Myotonic dystrophy protein kinase-like alpha; MRCK alpha; EC 2.7.11.1; MRCKA; MRCK; Myotonic dystrophy kinase-related CDC42-binding kinase alpha

Application Instructions

Application table	<table> <tr> <th>Application</th><th>Dilution</th></tr> <tr> <td>IHC-P</td><td>3 - 5 µg/ml</td></tr> </table>	Application	Dilution	IHC-P	3 - 5 µg/ml
Application	Dilution				
IHC-P	3 - 5 µg/ml				
Application Note	<p>IHC-P: Antigen Retrieval: Steam tissue section in Citrate buffer (pH 6.0).</p> <p>* The dilutions indicate recommended starting dilutions and the optimal dilutions or concentrations should be determined by the scientist.</p>				

Properties

Form	Liquid
Purification	Purified from goat serum by antigen affinity chromatography.
Buffer	Tris saline (pH 7.3), 0.02% Sodium azide and 0.5% BSA.
Preservative	0.02% Sodium azide
Stabilizer	0.5% BSA
Concentration	0.5 mg/ml
Storage instruction	For continuous use, store undiluted antibody at 2-8°C for up to a week. For long-term storage, aliquot and store at -20°C or below. Storage in frost free freezers is not recommended. Avoid repeated

freeze/thaw cycles. Suggest spin the vial prior to opening. The antibody solution should be gently mixed before use.

Note

For laboratory research only, not for drug, diagnostic or other use.

Bioinformation

Database links

[GeneID: 8476 Human](#)

[Swiss-port # Q5VT25 Human](#)

Background

The protein encoded by this gene is a member of the Serine/Threonine protein kinase family. This kinase contains multiple functional domains. Its kinase domain is highly similar to that of the myotonic dystrophy protein kinase (DMPK). This kinase also contains a Rac interactive binding (CRIB) domain, and has been shown to bind CDC42. It may function as a CDC42 downstream effector mediating CDC42 induced peripheral actin formation, and promoting cytoskeletal reorganization. Multiple alternatively spliced transcript variants have been described, and the full-length nature of two of them has been reported. [provided by RefSeq, Jul 2008]

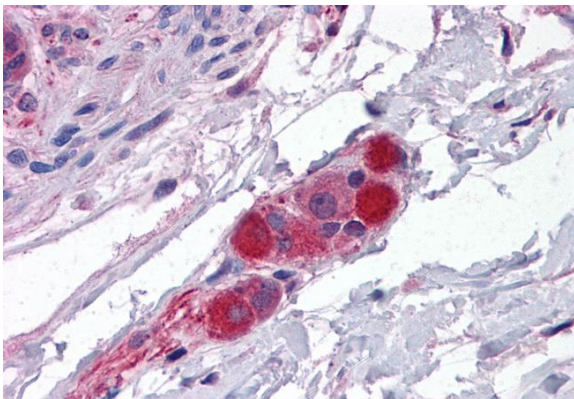
Research Area

Signaling Transduction antibody

Calculated Mw

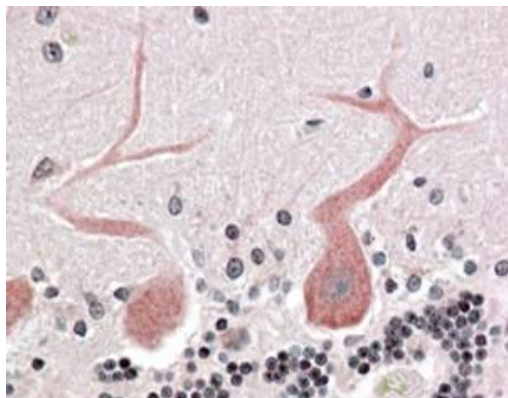
197 kDa

Images



ARG63525 anti-CDC42 binding kinase alpha antibody IHC-P image

Immunohistochemistry: Paraffin-embedded Human small intestine tissue. Antigen Retrieval: Steam tissue section in Citrate buffer (pH 6.0). The tissue section was stained with ARG63525 anti-CDC42 binding kinase alpha antibody at 3.75 µg/ml dilution followed by AP-staining.



ARG63525 anti-CDC42 binding kinase alpha antibody IHC-P image

Immunohistochemistry: Paraffin embedded Human Cerebellum (Steamed antigen retrieval with citrate buffer pH 6) stained with ARG63525 anti-CDC42 binding kinase alpha antibody at 3.8 µg/ml dilution followed by AP-staining.