

ARG63557 anti-GRAF / ARHGAP26 antibody

Package: 100 µg
Store at: -20°C

Summary

Product Description	Goat Polyclonal antibody recognizes GRAF / ARHGAP26
Tested Reactivity	Hu
Predict Reactivity	Ms, Rat, Cow, Dog
Tested Application	IHC-P, WB
Specificity	This antibody is expected to recognise both reported isoforms.
Host	Goat
Clonality	Polyclonal
Isotype	IgG
Target Name	GRAF / ARHGAP26
Species	Human
Immunogen	C-KTGLIPENYVEFL
Conjugation	Un-conjugated
Alternate Names	Rho-type GTPase-activating protein 26; OPHN1L1; Rho GTPase-activating protein 26; OPHN1L; Oligophrenin-1-like protein; GRAF1; GTPase regulator associated with focal adhesion kinase; GRAF

Application Instructions

Application table	Application	Dilution
	IHC-P	3 - 5 µg/ml
	WB	0.3 - 1 µg/ml
Application Note	WB: Recommend incubate at RT for 1h. IHC-P: Antigen Retrieval: Steam tissue section in Citrate buffer (pH 6.0). * The dilutions indicate recommended starting dilutions and the optimal dilutions or concentrations should be determined by the scientist.	

Properties

Form	Liquid
Purification	Purified from goat serum by antigen affinity chromatography.
Buffer	Tris saline (pH 7.3), 0.02% Sodium azide and 0.5% BSA.
Preservative	0.02% Sodium azide
Stabilizer	0.5% BSA
Concentration	0.5 mg/ml
Storage instruction	For continuous use, store undiluted antibody at 2-8°C for up to a week. For long-term storage, aliquot and store at -20°C or below. Storage in frost free freezers is not recommended. Avoid repeated

freeze/thaw cycles. Suggest spin the vial prior to opening. The antibody solution should be gently mixed before use.

Note

For laboratory research only, not for drug, diagnostic or other use.

Bioinformation

Database links

[GeneID: 23092 Human](#)

[Swiss-port # Q9UNA1 Human](#)

Background

Interaction of a cell with the extracellular matrix triggers integrin cell surface receptors to begin signaling cascades that regulate the organization of the actin-cytoskeleton. One of the proteins involved in these cascades is focal adhesion kinase. The protein encoded by this gene is a GTPase activating protein that binds to focal adhesion kinase and mediates the activity of the GTP binding proteins RhoA and Cdc42. Defects in this gene are a cause of juvenile myelomonocytic leukemia (JMML). Two transcript variants encoding different isoforms have been found for this gene. [provided by RefSeq, Mar 2010]

Research Area

Cell Biology and Cellular Response antibody; Neuroscience antibody; Signaling Transduction antibody

Calculated Mw

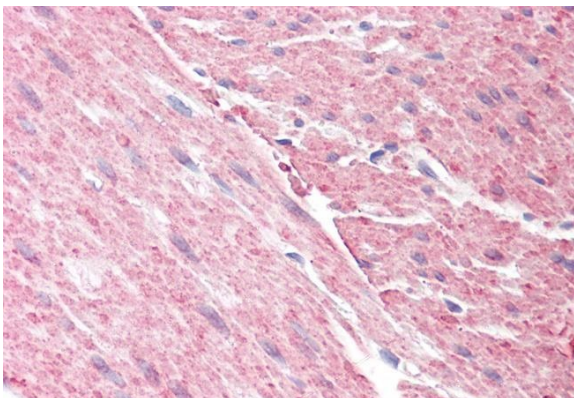
92 kDa

Images



ARG63557 anti-GRAF / ARHGAP26 antibody WB image

Western Blot: Human Heart lysate (35 µg protein in RIPA buffer) with (B) and without (A) blocking with the immunising peptide. stained with ARG63557 anti-GRAF / ARHGAP26 antibody at 0.3 µg/ml dilution.



ARG63557 anti-GRAF / ARHGAP26 antibody IHC-P image

Immunohistochemistry: Paraffin-embedded Human colon tissue. Antigen Retrieval: Steam tissue section in Citrate buffer (pH 6.0). The tissue section was stained with ARG63557 anti-GRAF / ARHGAP26 antibody at 3.75 µg/ml dilution followed by AP-staining.