

ARG63575 anti-MAML1 / Mastermind antibody

Package: 100 µg
Store at: -20°C

Summary

Product Description	Goat Polyclonal antibody recognizes MAML1 / Mastermind
Tested Reactivity	Hu
Predict Reactivity	Ms
Tested Application	IHC-P, WB
Host	Goat
Clonality	Polyclonal
Isotype	IgG
Target Name	MAML1 / Mastermind
Species	Human
Immunogen	VLPTCPMAEFALPR
Conjugation	Un-conjugated
Alternate Names	Mam1; Mastermind-like protein 1; Mam-1

Application Instructions

Application table	Application	Dilution
	IHC-P	2 - 4 µg/ml
	WB	0.1 - 0.3 µg/ml
Application Note	IHC-P: Antigen Retrieval: Steam tissue section in Citrate buffer (pH 6.0). WB: Recommend incubate at RT for 1h. * The dilutions indicate recommended starting dilutions and the optimal dilutions or concentrations should be determined by the scientist.	

Properties

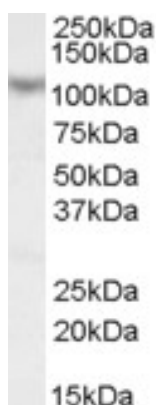
Form	Liquid
Purification	Purified from goat serum by antigen affinity chromatography.
Buffer	Tris saline (pH 7.3), 0.02% Sodium azide and 0.5% BSA.
Preservative	0.02% Sodium azide
Stabilizer	0.5% BSA
Concentration	0.5 mg/ml
Storage instruction	For continuous use, store undiluted antibody at 2-8°C for up to a week. For long-term storage, aliquot and store at -20°C or below. Storage in frost free freezers is not recommended. Avoid repeated freeze/thaw cycles. Suggest spin the vial prior to opening. The antibody solution should be gently mixed before use.

Note For laboratory research only, not for drug, diagnostic or other use.

Bioinformation

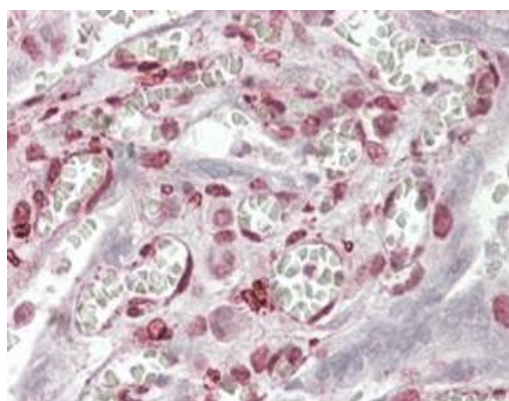
Database links	GeneID: 9794 Human Swiss-port # Q92585 Human
Background	This protein is the human homolog of mastermind, a Drosophila protein that plays a role in the Notch signaling pathway involved in cell-fate determination. There is in vitro evidence that the human homolog forms a complex with the intracellular portion of human Notch receptors and can increase expression of a Notch-induced gene. This evidence supports its proposed function as a transcriptional co-activator in the Notch signaling pathway. [provided by RefSeq, Jul 2008]
Research Area	Developmental Biology antibody; Signaling Transduction antibody
Calculated Mw	108 kDa

Images



ARG63575 anti-MAML1 / Mastermind antibody WB image

Western Blot: Human Skeletal Muscle lysate (35 µg protein in RIPA buffer) stained with ARG63575 anti-MAML1 / Mastermind antibody at 0.1 µg/ml dilution.



ARG63575 anti-MAML1 / Mastermind antibody IHC-P image

Immunohistochemistry: paraffin embedded Human Placenta. (Steamed antigen retrieval with citrate buffer pH 6) stained with ARG63575 anti-MAML1 / Mastermind antibody at 3.8 µg/ml dilution followed by AP-staining.