

## ARG63576 anti-FBL2 / FBXL2 antibody

Package: 100 µg  
Store at: -20°C

### Summary

Product Description	Goat Polyclonal antibody recognizes FBL2 / FBXL2
Tested Reactivity	Hu, Rat
Predict Reactivity	Cow, Dog
Tested Application	IHC-P, WB
Host	Goat
Clonality	Polyclonal
Isotype	IgG
Target Name	FBL2 / FBXL2
Species	Human
Immunogen	VFSNNDEGLINKK-C
Conjugation	Un-conjugated
Alternate Names	F-box and leucine-rich repeat protein 2; FBL2; FBL3; F-box/LRR-repeat protein 2; F-box protein FBL2/FBL3

### Application Instructions

Application table	Application	Dilution
	IHC-P	5 - 10 µg/ml
	WB	0.3 - 1 µg/ml
Application Note	IHC-P: Antigen Retrieval: Steam tissue section in Citrate buffer (pH 6.0). WB: Recommend incubate at RT for 1h. * The dilutions indicate recommended starting dilutions and the optimal dilutions or concentrations should be determined by the scientist.	

### Properties

Form	Liquid
Purification	Purified from goat serum by antigen affinity chromatography.
Buffer	Tris saline (pH 7.3), 0.02% Sodium azide and 0.5% BSA.
Preservative	0.02% Sodium azide
Stabilizer	0.5% BSA
Concentration	0.5 mg/ml
Storage instruction	For continuous use, store undiluted antibody at 2-8°C for up to a week. For long-term storage, aliquot and store at -20°C or below. Storage in frost free freezers is not recommended. Avoid repeated freeze/thaw cycles. Suggest spin the vial prior to opening. The antibody solution should be gently mixed

before use.

#### Note

For laboratory research only, not for drug, diagnostic or other use.

## Bioinformation

#### Database links

[GeneID: 25827 Human](#)

[Swiss-port # Q9UKC9 Human](#)

#### Background

This gene encodes a member of the F-box protein family which is characterized by an approximately 40 amino acid motif, the F-box. The F-box proteins constitute one of the four subunits of ubiquitin protein ligase complex called SCFs (SKP1-cullin-F-box), which function in phosphorylation-dependent ubiquitination. The F-box proteins are divided into 3 classes: Fbws containing WD-40 domains, Fbls containing leucine-rich repeats, and Fbxs containing either different protein-protein interaction modules or no recognizable motifs. The protein encoded by this gene belongs to the Fbls class and, in addition to an F-box, contains 12 tandem leucine-rich repeats. Alternatively spliced transcript variants encoding different isoforms have been found for this gene. [provided by RefSeq, Jan 2010]

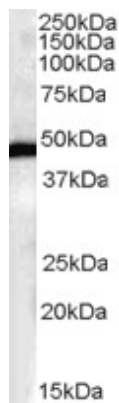
#### Research Area

Gene Regulation antibody

#### Calculated Mw

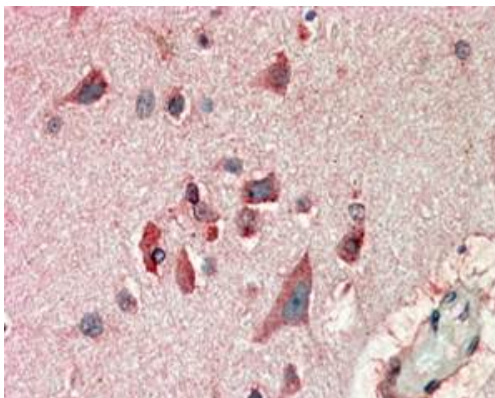
47 kDa

## Images



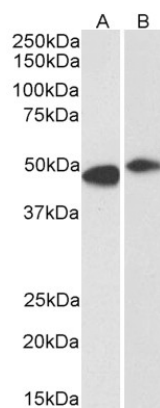
ARG63576 anti-FBL2 / FBXL2 antibody WB image

Western Blot: Human Brain lysates (RIPA buffer, 35 µg total protein per lane) stained with ARG63576 anti-FBL2 / FBXL2 antibody at 0.3 µg/ml dilution.



ARG63576 anti-FBL2 / FBXL2 antibody IHC-P image

Immunohistochemistry: paraffin embedded Human Cerebral Cortex. (Steamed antigen retrieval with citrate buffer pH 6) stained with ARG63576 anti-FBL2 / FBXL2 antibody at 10 µg/ml dilution followed by AP-staining.



#### ARG63576 anti-FBL2 / FBXL2 antibody WB image

Western blot: 35 µg of Human frontal cortex (A) and Rat brain (B) lysates (in RIPA buffer) stained with ARG63576 anti-FBL2 / FBXL2 antibody at 0.3 µg/ml dilution and incubated at RT for 1 hour.