

ARG63586 anti-MSX1 antibody

Package: 100 µg
Store at: -20°C

Summary

Product Description	Goat Polyclonal antibody recognizes MSX1
Tested Reactivity	Hu
Predict Reactivity	Ms, Rat, Cow, Pig
Tested Application	IHC-P, WB
Host	Goat
Clonality	Polyclonal
Isotype	IgG
Target Name	MSX1
Species	Human
Immunogen	TSLPLGVKVEDS-C
Conjugation	Un-conjugated
Alternate Names	HYD1; Msh homeobox 1-like protein; HOX7; Homeobox protein Hox-7; Homeobox protein MSX-1; ECTD3; STHAG1

Application Instructions

Application table	Application	Dilution
	IHC-P	2 - 4 µg/ml
	WB	1 µg/ml
Application Note	<p>IHC-P: Antigen Retrieval: Steam tissue section in Citrate buffer (pH 6.0). WB: Recommend incubate at RT for 1h. * The dilutions indicate recommended starting dilutions and the optimal dilutions or concentrations should be determined by the scientist.</p>	

Properties

Form	Liquid
Purification	Purified from goat serum by antigen affinity chromatography.
Buffer	Tris saline (pH 7.3), 0.02% Sodium azide and 0.5% BSA.
Preservative	0.02% Sodium azide
Stabilizer	0.5% BSA
Concentration	0.5 mg/ml
Storage instruction	For continuous use, store undiluted antibody at 2-8°C for up to a week. For long-term storage, aliquot and store at -20°C or below. Storage in frost free freezers is not recommended. Avoid repeated freeze/thaw cycles. Suggest spin the vial prior to opening. The antibody solution should be gently mixed

before use.

Note

For laboratory research only, not for drug, diagnostic or other use.

Bioinformation

Database links

[GeneID: 4487 Human](#)

[Swiss-port # P28360 Human](#)

Background

This gene encodes a member of the muscle segment homeobox gene family. The encoded protein functions as a transcriptional repressor during embryogenesis through interactions with components of the core transcription complex and other homeoproteins. It may also have roles in limb-pattern formation, craniofacial development, particularly odontogenesis, and tumor growth inhibition. Mutations in this gene, which was once known as homeobox 7, have been associated with nonsyndromic cleft lip with or without cleft palate 5, Witkop syndrome, Wolf-Hirschorn syndrome, and autosomal dominant hypodontia. [provided by RefSeq, Jul 2008]

Research Area

Developmental Biology antibody; Gene Regulation antibody; Neuroscience antibody

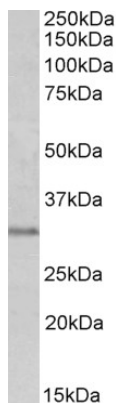
Calculated Mw

31 kDa

PTM

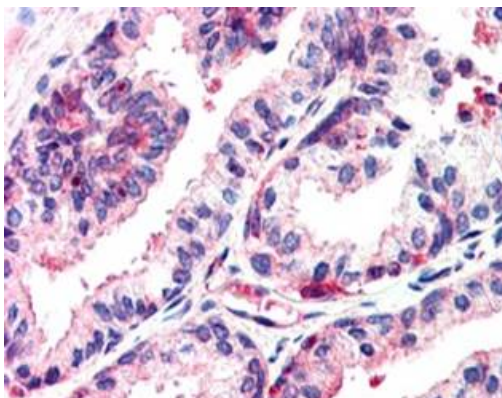
Sumoylated by PIAS1, desumoylated by SENP1.

Images



ARG63586 anti-MSX1 antibody WB image

Western Blot: Human Prostate lysate (35 µg protein in RIPA buffer) stained with ARG63586 anti-MSX1 antibody at 0.3 µg/ml dilution.



ARG63586 anti-MSX1 antibody IHC-P image

Immunohistochemistry: paraffin embedded Human Prostate. (Steamed antigen retrieval with citrate buffer pH 6) stained with ARG63586 anti-MSX1 antibody at 2.5 µg/ml dilution followed by AP-staining.