

ARG63587 anti-KLF3 / BKLF antibody

Package: 100 µg
Store at: -20°C

Summary

Product Description	Goat Polyclonal antibody recognizes KLF3 / BKLF
Tested Reactivity	Hu
Predict Reactivity	Ms, Rat, Cow, Dog, Pig
Tested Application	FACS, ICC/IF, WB
Host	Goat
Clonality	Polyclonal
Isotype	IgG
Target Name	KLF3 / BKLF
Species	Human
Immunogen	LMFDPVPVKQEAMD-C
Conjugation	Un-conjugated
Alternate Names	CACCC-box-binding protein BKLF; Krueppel-like factor 3; BKLF; Basic krueppel-like factor; TEF-2

Application Instructions

Application table	Application	Dilution
	FACS	10 µg/ml
	ICC/IF	10 µg/ml
	WB	1 - 3 µg/ml
Application Note	WB: Recommend incubate at RT for 1h. * The dilutions indicate recommended starting dilutions and the optimal dilutions or concentrations should be determined by the scientist.	

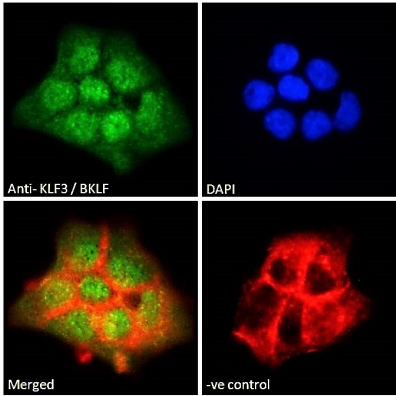
Properties

Form	Liquid
Purification	Purified from goat serum by antigen affinity chromatography.
Buffer	Tris saline (pH 7.3), 0.02% Sodium azide and 0.5% BSA.
Preservative	0.02% Sodium azide
Stabilizer	0.5% BSA
Concentration	0.5 mg/ml
Storage instruction	For continuous use, store undiluted antibody at 2-8°C for up to a week. For long-term storage, aliquot and store at -20°C or below. Storage in frost free freezers is not recommended. Avoid repeated freeze/thaw cycles. Suggest spin the vial prior to opening. The antibody solution should be gently mixed before use.

Bioinformation

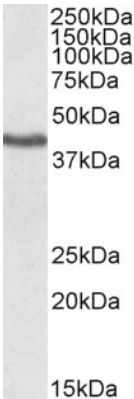
Database links	GeneID: 51274 Human Swiss-port # P57682 Human
Gene Symbol	KLF3
Gene Full Name	Kruppel-like factor 3 (basic)
Function	Binds to the CACCC box of erythroid cell-expressed genes. May play a role in hematopoiesis (By similarity). [UniProt]
Research Area	Cell Biology and Cellular Response antibody; Gene Regulation antibody
Calculated Mw	39 kDa
PTM	Sumoylated with SUMO1. Sumoylation is enhanced by PIAS1, PIAS2alpha and PIAS2beta, and PIAS4, but not by Pc2. Enhances transcriptional repression, but has no effect on DNA binding. Sumoylation on Lys-198 is the major site (By similarity).

Images



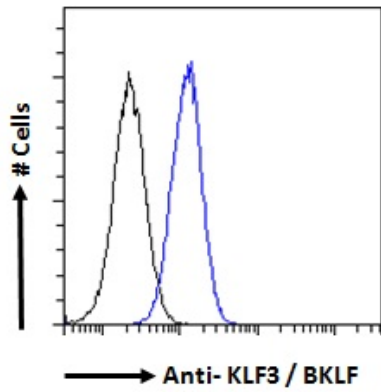
ARG63587 anti-KLF3 / BKLF antibody ICC/IF image

Immunofluorescence: Paraformaldehyde fixed A431 cells permeabilized with 0.15% Triton. Cells were stained with ARG63587 anti-KLF3 / BKLF antibody (green) at 10 µg/ml dilution for 1 hour. DAPI (blue) for nuclear staining. Phalloidin (red) for Actin filaments staining. Negative control: Unimmunized goat IgG (green) at 10 µg/ml dilution.



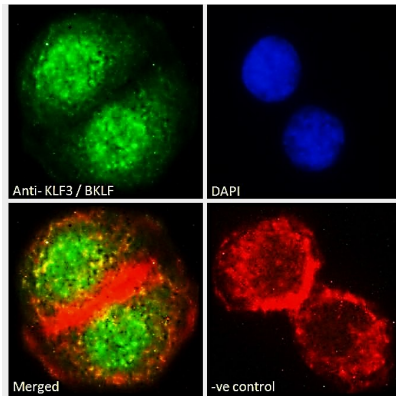
ARG63587 anti-KLF3 / BKLF antibody WB image

Western blot: 35 µg of Human heart lysate (in RIPA buffer) stained with ARG63587 anti-KLF3 / BKLF antibody at 1 µg/ml dilution and incubated at RT for 1 hour.



ARG63587 anti-KLF3 / BKLF antibody FACS image

Flow Cytometry: Paraformaldehyde-fixed A431 cells permeabilized with 0.5% Triton. Cells were stained with ARG63587 anti-KLF3 / BKLF antibody (blue line) at 10 $\mu\text{g}/\text{ml}$ dilution for 1 hour, followed by incubation with Alexa FluorR 488 labelled secondary antibody. IgG control: Unimmunized goat IgG (black line).



ARG63587 anti-KLF3 / BKLF antibody ICC/IF image

Immunofluorescence: Paraformaldehyde fixed A549 cells permeabilized with 0.15% Triton. Cells were stained with ARG63587 anti-KLF3 / BKLF antibody (green) at 10 $\mu\text{g}/\text{ml}$ dilution for 1 hour. DAPI (blue) for nuclear staining. Phalloidin (red) for Actin filaments staining. Negative control: Unimmunized goat IgG (green) at 10 $\mu\text{g}/\text{ml}$ dilution.