

ARG63594 anti-GOLPH2 antibody

Package: 100 µg
Store at: -20°C

Summary

Product Description	Goat Polyclonal antibody recognizes GOLPH2
Tested Reactivity	Hu
Tested Application	IHC-P
Specificity	Both variants (NP_057632.2; NP_808800.1) encode the same isoform
Host	Goat
Clonality	Polyclonal
Isotype	IgG
Target Name	GOLPH2
Species	Human
Immunogen	C-NLLDQREKRNHTL
Conjugation	Un-conjugated
Alternate Names	Golgi phosphoprotein 2; Golgi membrane protein GP73; GOLPH2; bA379P1.3; Golgi membrane protein 1; C9orf155; PSEC0257; HEL46; GP73

Application Instructions

Application table	Application	Dilution
	IHC-P	3 - 6 µg/ml
Application Note	IHC-P: Antigen Retrieval: Steam tissue section in Citrate buffer (pH 6.0). * The dilutions indicate recommended starting dilutions and the optimal dilutions or concentrations should be determined by the scientist.	

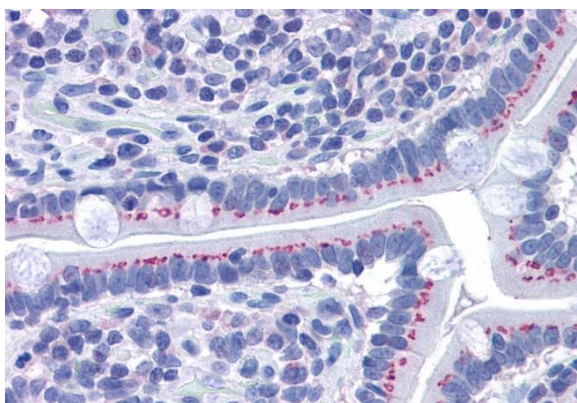
Properties

Form	Liquid
Purification	Purified from goat serum by antigen affinity chromatography.
Buffer	Tris saline (pH 7.3), 0.02% Sodium azide and 0.5% BSA.
Preservative	0.02% Sodium azide
Stabilizer	0.5% BSA
Concentration	0.5 mg/ml
Storage instruction	For continuous use, store undiluted antibody at 2-8°C for up to a week. For long-term storage, aliquot and store at -20°C or below. Storage in frost free freezers is not recommended. Avoid repeated freeze/thaw cycles. Suggest spin the vial prior to opening. The antibody solution should be gently mixed before use.
Note	For laboratory research only, not for drug, diagnostic or other use.

Bioinformation

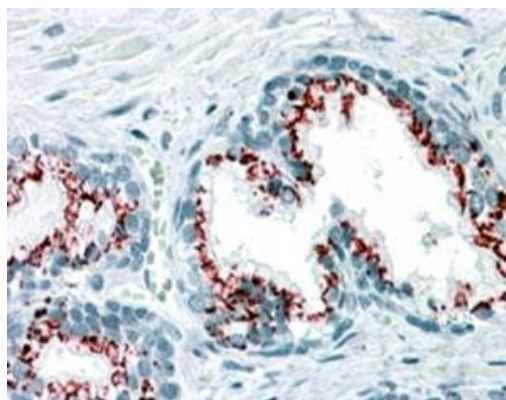
Database links	GeneID: 51280 Human Swiss-port # Q8NBJ4 Human
Background	The Golgi complex plays a key role in the sorting and modification of proteins exported from the endoplasmic reticulum. The protein encoded by this gene is a type II Golgi transmembrane protein. It processes proteins synthesized in the rough endoplasmic reticulum and assists in the transport of protein cargo through the Golgi apparatus. The expression of this gene has been observed to be upregulated in response to viral infection. Alternatively spliced transcript variants encoding the same protein have been described for this gene. [provided by RefSeq, Sep 2009]
Research Area	Signaling Transduction antibody
Calculated Mw	45 kDa
PTM	Glycosylated. Phosphorylation sites are present in the extracellular medium.

Images



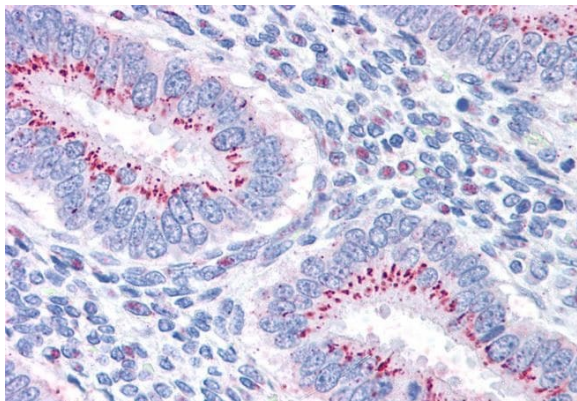
ARG63594 anti-GOLPH2 antibody IHC-P image

Immunohistochemistry: Paraffin-embedded Human small intestine tissue. Antigen Retrieval: Steam tissue section in Citrate buffer (pH 6.0). The tissue section was stained with ARG63594 anti-GOLPH2 antibody at 3.75 µg/ml dilution followed by AP-staining.



ARG63594 anti-GOLPH2 antibody IHC-P image

Immunohistochemistry: paraffin embedded Human Prostate. (Steamed antigen retrieval with citrate buffer pH 6) stained with ARG63594 anti-GOLPH2 antibody at 3.8 µg/ml dilution followed by AP-staining.



ARG63594 anti-GOLPH2 antibody IHC-P image

Immunohistochemistry: Paraffin-embedded Human uterus tissue.
Antigen Retrieval: Steam tissue section in Citrate buffer (pH 6.0). The tissue section was stained with ARG63594 anti-GOLPH2 antibody at 3.75 µg/ml dilution followed by AP-staining.