

## ARG63595 anti-RNF39 / LIRF antibody

Package: 100 µg  
Store at: -20°C

### Summary

Product Description	Goat Polyclonal antibody recognizes RNF39 / LIRF
Tested Reactivity	Hu
Predict Reactivity	Pig, Rat
Tested Application	IHC-P, WB
Specificity	This antibody is expected to recognize 2 of the 3 reported isoforms (NP_079512.1 and NP_739575.1 but not NP_739576.1)
Host	Goat
Clonality	Polyclonal
Isotype	IgG
Target Name	RNF39 / LIRF
Species	Human
Immunogen	CDPRAPLRIVPAES
Conjugation	Un-conjugated
Alternate Names	Protein HZFw; HZF; HZFW; LIRF; RING finger protein 39

### Application Instructions

Application table	Application	Dilution
	IHC-P	10 µg/ml
	WB	1 - 3 µg/ml
Application Note	WB: Recommend incubate at RT for 1h. IHC-P: Antigen Retrieval: Steam tissue section in Citrate buffer (pH 6.0). * The dilutions indicate recommended starting dilutions and the optimal dilutions or concentrations should be determined by the scientist.	

### Properties

Form	Liquid
Purification	Purified from goat serum by antigen affinity chromatography.
Buffer	Tris saline (pH 7.3), 0.02% Sodium azide and 0.5% BSA.
Preservative	0.02% Sodium azide
Stabilizer	0.5% BSA
Concentration	0.5 mg/ml
Storage instruction	For continuous use, store undiluted antibody at 2-8°C for up to a week. For long-term storage, aliquot and store at -20°C or below. Storage in frost free freezers is not recommended. Avoid repeated

freeze/thaw cycles. Suggest spin the vial prior to opening. The antibody solution should be gently mixed before use.

Note

For laboratory research only, not for drug, diagnostic or other use.

## Bioinformation

Database links

[GeneID: 80352 Human](#)

[Swiss-port # Q9H2S5 Human](#)

Background

This gene lies within the major histocompatibility complex class I region on chromosome 6. Studies of a similar rat protein suggest that this gene encodes a protein that plays a role in an early phase of synaptic plasticity. Multiple transcript variants encoding different isoforms have been found for this gene. [provided by RefSeq, Jul 2008]

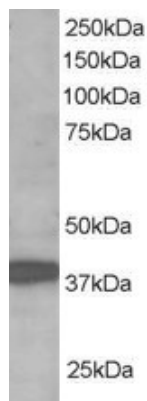
Research Area

Neuroscience antibody

Calculated Mw

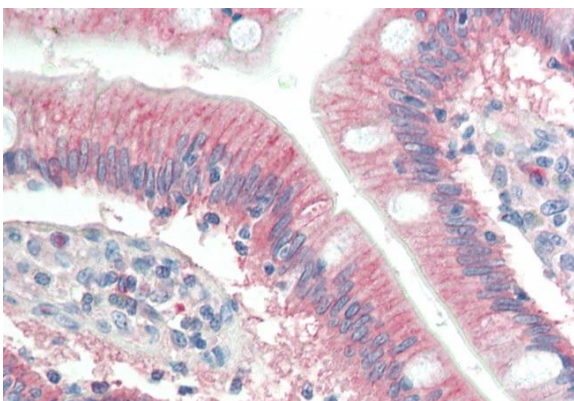
46 kDa

## Images



ARG63595 anti-RNF39 / LIRF antibody WB image

Western Blot: human brain lysate (RIPA buffer, 35 µg total protein per lane) stained with ARG63595 anti-RNF39 / LIRF antibody at 1 µg/ml dilution.



ARG63595 anti-RNF39 / LIRF antibody IHC-P image

Immunohistochemistry: Paraffin-embedded Human small intestine tissue. Antigen Retrieval: Steam tissue section in Citrate buffer (pH 6.0). The tissue section was stained with ARG63595 anti-RNF39 / LIRF antibody at 10 µg/ml dilution followed by AP-staining.