

ARG63605 anti-Pescadillo antibody

Package: 100 µg
Store at: -20°C

Summary

Product Description	Goat Polyclonal antibody recognizes Pescadillo
Tested Reactivity	Hu
Predict Reactivity	Ms, Cow, Pig
Tested Application	IHC-P, WB
Host	Goat
Clonality	Polyclonal
Isotype	IgG
Target Name	Pescadillo
Species	Human
Immunogen	GGLEKKKYERGSA-C
Conjugation	Un-conjugated
Alternate Names	Pescadillo homolog; PES

Application Instructions

Application table	Application	Dilution
	IHC-P	2 - 4 µg/ml
	WB	1 - 3 µg/ml
Application Note	<p>IHC-P: Antigen Retrieval: Steam tissue section in Citrate buffer (pH 6.0). WB: Recommend incubate at RT for 1h. * The dilutions indicate recommended starting dilutions and the optimal dilutions or concentrations should be determined by the scientist.</p>	

Properties

Form	Liquid
Purification	Purified from goat serum by antigen affinity chromatography.
Buffer	Tris saline (pH 7.3), 0.02% Sodium azide and 0.5% BSA.
Preservative	0.02% Sodium azide
Stabilizer	0.5% BSA
Concentration	0.5 mg/ml
Storage instruction	For continuous use, store undiluted antibody at 2-8°C for up to a week. For long-term storage, aliquot and store at -20°C or below. Storage in frost free freezers is not recommended. Avoid repeated freeze/thaw cycles. Suggest spin the vial prior to opening. The antibody solution should be gently mixed before use.

Note

For laboratory research only, not for drug, diagnostic or other use.

Bioinformation

Database links

[GeneID: 23481 Human](#)

[Swiss-port # O00541 Human](#)

Background

This gene encodes a nuclear protein that contains a breast cancer associated gene 1 (BRCA1) C-terminal interaction domain. The encoded protein interacts with BOP1 and WDR12 to form the PeBoW complex, which plays a critical role in cell proliferation via pre-rRNA processing and 60S ribosomal subunit maturation. Expression of this gene may play an important role in breast cancer proliferation and tumorigenicity. Alternatively spliced transcript variants encoding multiple isoforms have been observed for this gene. Pseudogenes of this gene are located on the long arm of chromosome 4 and the short arm of chromosome 9. [provided by RefSeq, Aug 2011]

Research Area

Cancer antibody; Signaling Transduction antibody

Calculated Mw

68 kDa

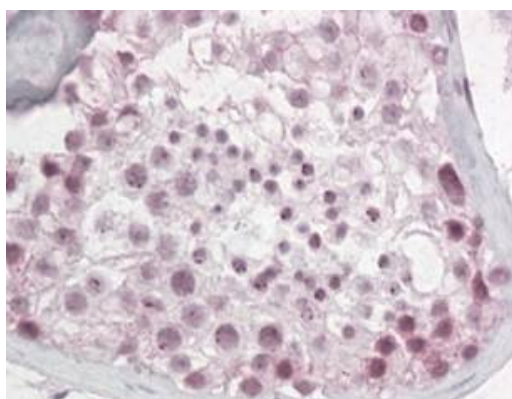
PTM

Sumoylated.

Images

**ARG63605 anti-Pescadillo antibody WB image**

Western Blot: HeLa lysate (35 µg protein in RIPA buffer) stained with ARG63605 anti-Pescadillo antibody at 1 µg/ml dilution.

**ARG63605 anti-Pescadillo antibody IHC-P image**

Immunohistochemistry: paraffin embedded Human Testis. (Steamed antigen retrieval with citrate buffer pH 6) stained with ARG63605 anti-Pescadillo antibody at 3.8 µg/ml dilution followed by AP-staining.