

ARG63635 anti-CRKL antibody

Package: 100 µg
Store at: -20°C

Summary

Product Description	Goat Polyclonal antibody recognizes CRKL
Tested Reactivity	Hu
Predict Reactivity	Ms, Rat
Tested Application	IHC-P, WB
Host	Goat
Clonality	Polyclonal
Isotype	IgG
Target Name	CRKL
Species	Human
Immunogen	C-KIFDPQNPDENE
Conjugation	Un-conjugated
Alternate Names	Crk-like protein

Application Instructions

Application table	Application	Dilution
	IHC-P	2 - 4 µg/ml
	WB	0.01 - 0.03 µg/ml
Application Note	<p>IHC-P: Antigen Retrieval: Steam tissue section in Citrate buffer (pH 6.0). WB: Recommend incubate at RT for 1h. * The dilutions indicate recommended starting dilutions and the optimal dilutions or concentrations should be determined by the scientist.</p>	

Properties

Form	Liquid
Purification	Purified from goat serum by antigen affinity chromatography.
Buffer	Tris saline (pH 7.3), 0.02% Sodium azide and 0.5% BSA.
Preservative	0.02% Sodium azide
Stabilizer	0.5% BSA
Concentration	0.5 mg/ml
Storage instruction	For continuous use, store undiluted antibody at 2-8°C for up to a week. For long-term storage, aliquot and store at -20°C or below. Storage in frost free freezers is not recommended. Avoid repeated freeze/thaw cycles. Suggest spin the vial prior to opening. The antibody solution should be gently mixed before use.

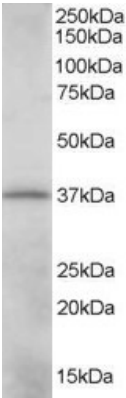
Note

For laboratory research only, not for drug, diagnostic or other use.

Bioinformation

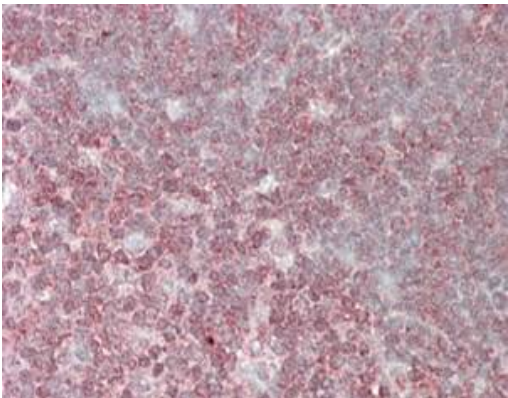
Database links	GeneID: 1399 Human Swiss-port # P46109 Human
Background	This gene encodes a protein kinase containing SH2 and SH3 (src homology) domains which has been shown to activate the RAS and JUN kinase signaling pathways and transform fibroblasts in a RAS-dependent fashion. It is a substrate of the BCR-ABL tyrosine kinase, plays a role in fibroblast transformation by BCR-ABL, and may be oncogenic.[provided by RefSeq, Jan 2009]
Research Area	Cancer antibody; Gene Regulation antibody; Neuroscience antibody; Signaling Transduction antibody
Calculated Mw	34 kDa

Images



ARG63635 anti-CRKL antibody WB image

Western Blot: K562 lysate (35 µg protein in RIPA buffer) stained with ARG63635 anti-CRKL antibody at 0.01 µg/ml dilution.



ARG63635 anti-CRKL antibody IHC-P image

Immunohistochemistry: paraffin embedded Human Thymus. (Steamed antigen retrieval with citrate buffer pH 6) stained with ARG63635 anti-CRKL antibody at 3.8 µg/ml dilution followed by AP-staining.