

ARG63668 anti-TOM1L2 antibody

Package: 100 µg
Store at: -20°C

Summary

Product Description	Goat Polyclonal antibody recognizes TOM1L2
Tested Reactivity	Hu
Predict Reactivity	Ms, Dog
Tested Application	IHC-P, WB
Specificity	This antibody is expected to recognise both reported isoforms.
Host	Goat
Clonality	Polyclonal
Isotype	IgG
Target Name	TOM1L2
Species	Human
Immunogen	CRKKPERSEDALFAL
Conjugation	Un-conjugated
Alternate Names	Target of Myb-like protein 2; TOM1-like protein 2

Application Instructions

Application table	Application	Dilution
	IHC-P	5 - 10 µg/ml
	WB	0.1 - 1 µg/ml
Application Note	IHC-P: Antigen Retrieval: Steam tissue section in Citrate buffer (pH 6.0). WB: Recommend incubate at RT for 1h. * The dilutions indicate recommended starting dilutions and the optimal dilutions or concentrations should be determined by the scientist.	

Properties

Form	Liquid
Purification	Purified from goat serum by antigen affinity chromatography.
Buffer	Tris saline (pH 7.3), 0.02% Sodium azide and 0.5% BSA.
Preservative	0.02% Sodium azide
Stabilizer	0.5% BSA
Concentration	0.5 mg/ml
Storage instruction	For continuous use, store undiluted antibody at 2-8°C for up to a week. For long-term storage, aliquot and store at -20°C or below. Storage in frost free freezers is not recommended. Avoid repeated freeze/thaw cycles. Suggest spin the vial prior to opening. The antibody solution should be gently mixed

before use.

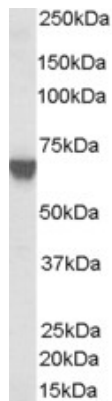
Note

For laboratory research only, not for drug, diagnostic or other use.

Bioinformation

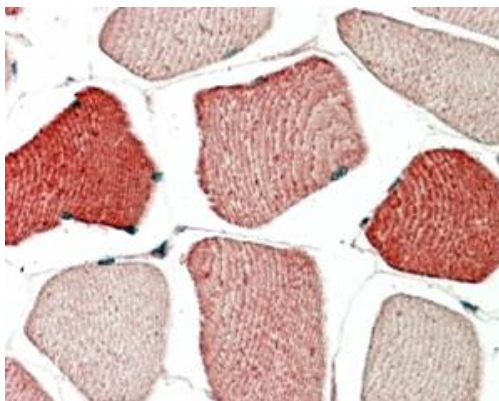
Database links	GeneID: 146691 Human Swiss-port # Q6ZVM7 Human
Gene Symbol	TOM1L2
Gene Full Name	target of myb1 like 2 membrane trafficking protein
Function	Probable role in protein transport. May regulate growth factor-induced mitogenic signaling. [UniProt]
Research Area	Signaling Transduction antibody
Calculated Mw	56 kDa

Images



ARG63668 anti-TOM1L2 antibody WB image

Western Blot: A431 lysate (35 µg protein in RIPA buffer) stained with ARG63668 anti-TOM1L2 antibody at 0.03 µg/ml dilution.



ARG63668 anti-TOM1L2 antibody IHC-P image

Immunohistochemistry: paraffin embedded Human Skeletal Muscle. (Steamed antigen retrieval with citrate buffer pH 6) stained with ARG63668 anti-TOM1L2 antibody at 5 µg/ml dilution followed by AP-staining.