

ARG63685 anti-Prostaglandin dehydrogenase 1 antibody

Package: 100 µg
Store at: -20°C

Summary

Product Description	Goat Polyclonal antibody recognizes Prostaglandin dehydrogenase 1
Tested Reactivity	Hu
Tested Application	IHC-P, WB
Host	Goat
Clonality	Polyclonal
Isotype	IgG
Target Name	Prostaglandin dehydrogenase 1
Species	Human
Immunogen	C-DYDTTPFQAKTQ
Conjugation	Un-conjugated
Alternate Names	15-PGDH; PGDH; Prostaglandin dehydrogenase 1; PGDH1; 15-hydroxyprostaglandin dehydrogenase [NAD; SDR36C1; EC 1.1.1.141; Short chain dehydrogenase/reductase family 36C member 1; PHOAR1

Application Instructions

Application table	Application	Dilution
	IHC-P	2.5 µg/ml
	WB	0.1 - 1 µg/ml

Application Note
WB: Recommend incubate at RT for 1h.
IHC-P: Antigen Retrieval: Steam tissue section in Citrate buffer (pH 6.0).
* The dilutions indicate recommended starting dilutions and the optimal dilutions or concentrations should be determined by the scientist.

Properties

Form	Liquid
Purification	Purified from goat serum by antigen affinity chromatography.
Buffer	Tris saline (pH 7.3), 0.02% Sodium azide and 0.5% BSA.
Preservative	0.02% Sodium azide
Stabilizer	0.5% BSA
Concentration	0.5 mg/ml
Storage instruction	For continuous use, store undiluted antibody at 2-8°C for up to a week. For long-term storage, aliquot and store at -20°C or below. Storage in frost free freezers is not recommended. Avoid repeated freeze/thaw cycles. Suggest spin the vial prior to opening. The antibody solution should be gently mixed before use.

Note

For laboratory research only, not for drug, diagnostic or other use.

Bioinformation

Database links

[GeneID: 3248 Human](#)

[Swiss-port # P15428 Human](#)

Background

This gene encodes a member of the short-chain nonmetalloenzyme alcohol dehydrogenase protein family. The encoded enzyme is responsible for the metabolism of prostaglandins, which function in a variety of physiologic and cellular processes such as inflammation. Mutations in this gene result in primary autosomal recessive hypertrophic osteoarthropathy and craniosteoarthropathy. Multiple transcript variants encoding different isoforms have been found for this gene. [provided by RefSeq, Mar 2009]

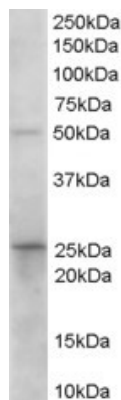
Research Area

Immune System antibody; Signaling Transduction antibody

Calculated Mw

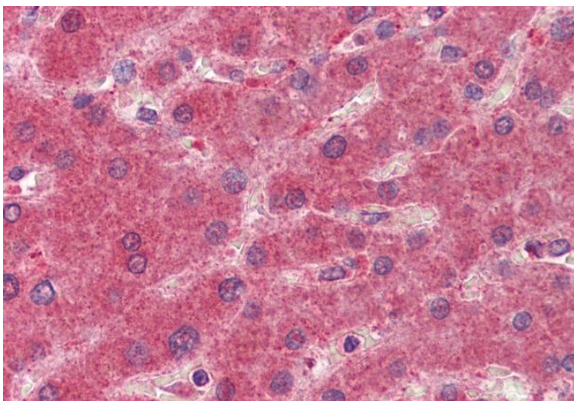
29 kDa

Images



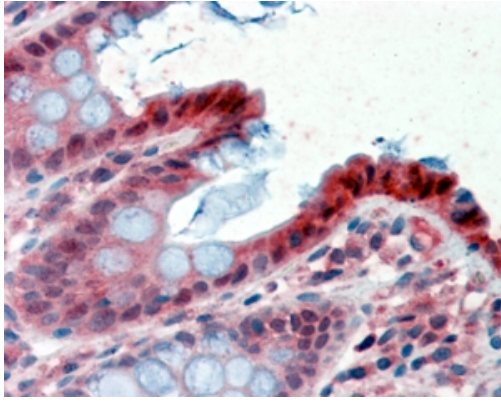
ARG63685 anti-Prostaglandin dehydrogenase 1 antibody WB image

Western Blot: Human Duodenum lysate (35 μ g protein in RIPA buffer) stained with ARG63685 anti-Prostaglandin dehydrogenase 1 antibody at 0.1 μ g/ml dilution.



ARG63685 anti-Prostaglandin dehydrogenase 1 antibody IHC-P image

Immunohistochemistry: Paraffin-embedded Human liver tissue. Antigen Retrieval: Steam tissue section in Citrate buffer (pH 6.0). The tissue section was stained with ARG63685 anti-Prostaglandin dehydrogenase 1 antibody at 2.5 μ g/ml dilution followed by AP-staining.



ARG63685 anti-Prostaglandin dehydrogenase 1 antibody IHC-P image

Immunohistochemistry: paraffin embedded Human Colon. (Steamed antigen retrieval with citrate buffer pH 6) stained with ARG63685 anti-Prostaglandin dehydrogenase 1 antibody at 2.5 $\mu\text{g}/\text{ml}$ dilution followed by AP-staining.