

ARG63687 anti-SLC18A2 / VMAT2 antibody

Package: 100 µg
Store at: -20°C

Summary

Product Description	Goat Polyclonal antibody recognizes SLC18A2 / VMAT2
Tested Reactivity	Hu, Ms
Predict Reactivity	Cow, Rat, Dog, Pig
Tested Application	IHC-P, WB
Host	Goat
Clonality	Polyclonal
Isotype	IgG
Target Name	SLC18A2 / VMAT2
Species	Human
Immunogen	C-SYPIGEDEESES
Conjugation	Un-conjugated
Alternate Names	VAT2; VMAT2; Solute carrier family 18 member 2; SVMT; Synaptic vesicular amine transporter; SVAT; Vesicular amine transporter 2; Monoamine transporter

Application Instructions

Application table	Application	Dilution
	IHC-P	Assay - dependent
	WB	1 - 3 µg/ml
Application Note	WB: Recommend incubate at RT for 1h. IHC-P: Antigen Retrieval: Heat mediation was performed in Citrate buffer (pH 6.0). * The dilutions indicate recommended starting dilutions and the optimal dilutions or concentrations should be determined by the scientist.	

Properties

Form	Liquid
Purification	Purified from goat serum by antigen affinity chromatography.
Buffer	Tris saline (pH 7.3), 0.02% Sodium azide and 0.5% BSA.
Preservative	0.02% Sodium azide
Stabilizer	0.5% BSA
Concentration	0.5 mg/ml
Storage instruction	For continuous use, store undiluted antibody at 2-8°C for up to a week. For long-term storage, aliquot and store at -20°C or below. Storage in frost free freezers is not recommended. Avoid repeated freeze/thaw cycles. Suggest spin the vial prior to opening. The antibody solution should be gently mixed

before use.

Note

For laboratory research only, not for drug, diagnostic or other use.

Bioinformation

Database links

[GeneID: 214084 Mouse](#)

[GeneID: 6571 Human](#)

[Swiss-port # Q05940 Human](#)

[Swiss-port # Q8BRU6 Mouse](#)

Background

The vesicular monoamine transporter acts to accumulate cytosolic monoamines into synaptic vesicles, using the proton gradient maintained across the synaptic vesicular membrane. Its proper function is essential to the correct activity of the monoaminergic systems that have been implicated in several human neuropsychiatric disorders. The transporter is a site of action of important drugs, including reserpine and tetrabenazine (summary by Peter et al., 1993 [PubMed 7905859]). See also SLC18A1 (MIM 193002).[supplied by OMIM, Jan 2011]

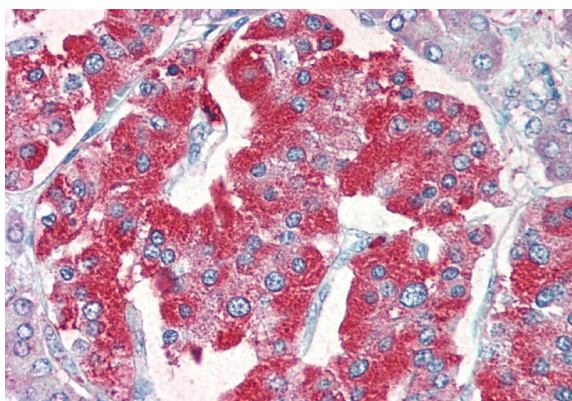
Research Area

Neuroscience antibody

Calculated Mw

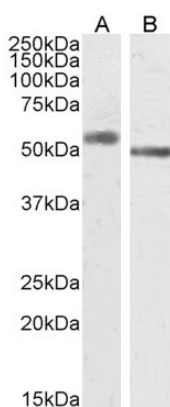
56 kDa

Images



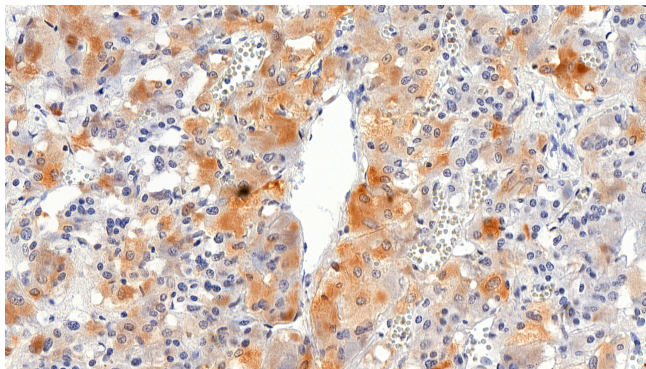
ARG63687 anti-SLC18A2 / VMAT2 antibody IHC-P image

Immunohistochemistry: Paraffin-embedded Human pancreas tissue. Antigen Retrieval: Steam tissue section in Citrate buffer (pH 6.0). The tissue section was stained with ARG63687 anti-SLC18A2 / VMAT2 antibody at 5 µg/ml dilution followed by AP-staining.



ARG63687 anti-SLC18A2 / VMAT2 antibody WB image

Western blot: 35 µg of Human adrenal gland (A) and Mouse brain (B) lysates (in RIPA buffer) stained with ARG63687 anti-SLC18A2 / VMAT2 antibody at 2 µg/ml dilution and incubated at RT for 1 hour.



ARG63687 anti-SLC18A2 / VMAT2 antibody IHC-P image

Immunohistochemistry: Paraffin-embedded Human adrenal gland tissue. Antigen Retrieval: Heat mediation was performed in Citrate buffer (pH 6.0). The tissue section was stained with ARG63687 anti-SLC18A2 / VMAT2 antibody at 2.5 µg/ml dilution followed by HRP-staining.