

ARG63760 anti-DPP10 antibody

Package: 100 µg
Store at: -20°C

Summary

Product Description	Goat Polyclonal antibody recognizes DPP10
Tested Reactivity	Hu
Predict Reactivity	Cow, Dog
Tested Application	IHC-P, WB
Specificity	This antibody is expected to recognise both reported isoforms (NP_065919.2 and NP_001004360.2).
Host	Goat
Clonality	Polyclonal
Isotype	IgG
Target Name	DPP10
Species	Human
Immunogen	C-DEGHNVSEKSKYHL
Conjugation	Un-conjugated
Alternate Names	Inactive dipeptidyl peptidase 10; Dipeptidyl peptidase-like protein 2; DPRP3; DPPY; DPRP-3; Dipeptidyl peptidase IV-related protein 3; DPP X; DPL2; Dipeptidyl peptidase X

Application Instructions

Application table	Application	Dilution
	IHC-P	3 - 5 µg/ml
	WB	0.1 - 0.3 µg/ml
Application Note	WB: Recommend incubate at RT for 1h. IHC-P: Antigen Retrieval: Steam tissue section in Citrate buffer (pH 6.0). * The dilutions indicate recommended starting dilutions and the optimal dilutions or concentrations should be determined by the scientist.	

Properties

Form	Liquid
Purification	Purified from goat serum by antigen affinity chromatography.
Buffer	Tris saline (pH 7.3), 0.02% Sodium azide and 0.5% BSA.
Preservative	0.02% Sodium azide
Stabilizer	0.5% BSA
Concentration	0.5 mg/ml
Storage instruction	For continuous use, store undiluted antibody at 2-8°C for up to a week. For long-term storage, aliquot and store at -20°C or below. Storage in frost free freezers is not recommended. Avoid repeated

freeze/thaw cycles. Suggest spin the vial prior to opening. The antibody solution should be gently mixed before use.

Note

For laboratory research only, not for drug, diagnostic or other use.

Bioinformation

Database links

[GeneID: 57628 Human](#)

[Swiss-port # Q8N608 Human](#)

Background

This gene encodes a single-pass type II membrane protein that is a member of the S9B family in clan SC of the serine proteases. This protein has no detectable protease activity, most likely due to the absence of the conserved serine residue normally present in the catalytic domain of serine proteases. However, it does bind specific voltage-gated potassium channels and alters their expression and biophysical properties. Mutations in this gene have been associated with asthma. Alternate transcriptional splice variants, encoding different isoforms, have been characterized. [provided by RefSeq, Jul 2008]

Research Area

Cell Biology and Cellular Response antibody

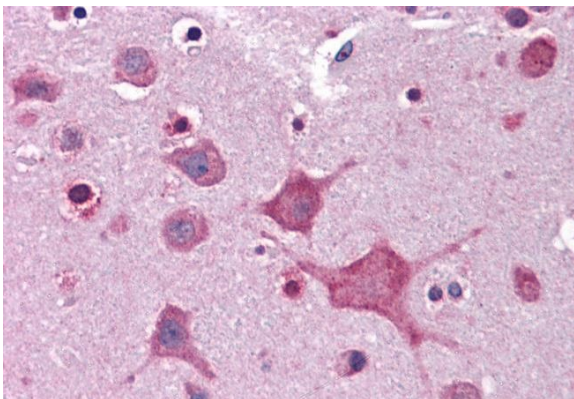
Calculated Mw

91 kDa

PTM

N-glycosylation is important for cell surface expression, specially at Asn-257, which is crucial.

Images



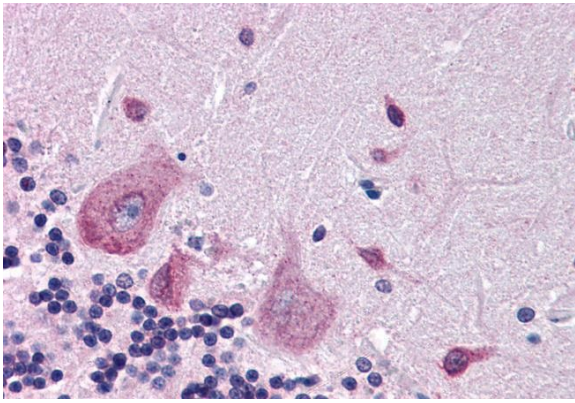
ARG63760 anti-DPP10 antibody IHC-P image

Immunohistochemistry: Paraffin-embedded Human cortex tissue. Antigen Retrieval: Steam tissue section in Citrate buffer (pH 6.0). The tissue section was stained with ARG63760 anti-DPP10 antibody at 3.75 µg/ml dilution followed by AP-staining.



ARG63760 anti-DPP10 antibody WB image

Western blot: 35 µg of Human bone marrow lysate (in RIPA buffer) stained with ARG63760 anti-DPP10 antibody at 0.1 µg/ml dilution and incubated at RT for 1 hour.



ARG63760 anti-DPP10 antibody IHC-P image

Immunohistochemistry: Paraffin-embedded Human cerebellum tissue. Antigen Retrieval: Steam tissue section in Citrate buffer (pH 6.0). The tissue section was stained with ARG63760 anti-DPP10 antibody at 3.75 µg/ml dilution followed by AP-staining.