

## ARG63774 anti-CD32B antibody

Package: 100 µg  
Store at: -20°C

### Summary

Product Description	Goat Polyclonal antibody recognizes CD32B
Tested Reactivity	Hu
Tested Application	IHC-P, WB
Specificity	This antibody is expected to recognise all reported isoforms (NP_001002273.1; NP_001002274.1; NP_001002275.1; NP_003992.3; NP_001177757.1).
Host	Goat
Clonality	Polyclonal
Isotype	IgG
Target Name	CD32B
Species	Human
Immunogen	C-PDALEEPDDQNRI
Conjugation	Un-conjugated
Alternate Names	Fc-gamma-RIIc; Fc-gamma RII-c; CD32; CD antigen CD32; CD32B; IgG Fc receptor II-c; Low affinity immunoglobulin gamma Fc region receptor II-c; FCG2; IGFR2; FcRII-c; FCGR2; CDw32

### Application Instructions

Application table	Application	Dilution
	IHC-P	Assay - dependent
	WB	0.3 - 1 µg/ml
Application Note	WB: Recommend incubate at RT for 1h. IHC-P: Antigen Retrieval: Steam tissue section in Citrate buffer (pH 6.0). * The dilutions indicate recommended starting dilutions and the optimal dilutions or concentrations should be determined by the scientist.	

### Properties

Form	Liquid
Purification	Purified from goat serum by antigen affinity chromatography.
Buffer	Tris saline (pH 7.3), 0.02% Sodium azide and 0.5% BSA.
Preservative	0.02% Sodium azide
Stabilizer	0.5% BSA
Concentration	0.5 mg/ml
Storage instruction	For continuous use, store undiluted antibody at 2-8°C for up to a week. For long-term storage, aliquot and store at -20°C or below. Storage in frost free freezers is not recommended. Avoid repeated

freeze/thaw cycles. Suggest spin the vial prior to opening. The antibody solution should be gently mixed before use.

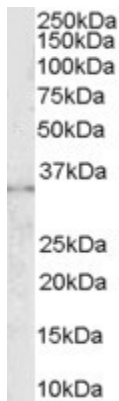
Note For laboratory research only, not for drug, diagnostic or other use.

## Bioinformation

---

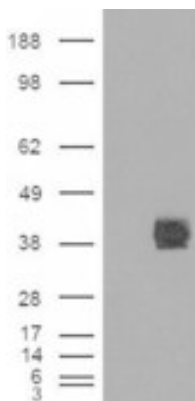
Database links	<a href="#">GeneID: 2213 Human</a> <a href="#">Swiss-port # P31994 Human</a>
Background	The protein encoded by this gene is a low affinity receptor for the Fc region of immunoglobulin gamma complexes. The encoded protein is involved in the phagocytosis of immune complexes and in the regulation of antibody production by B-cells. Variations in this gene may increase susceptibility to systemic lupus erythematosus (SLE). Several transcript variants encoding different isoforms have been found for this gene. [provided by RefSeq, Jun 2010]
Research Area	Developmental Biology antibody; Immune System antibody
Calculated Mw	36 kDa
PTM	Phosphorylated by the SRC-type Tyr-kinases LYN and BLK.

## Images



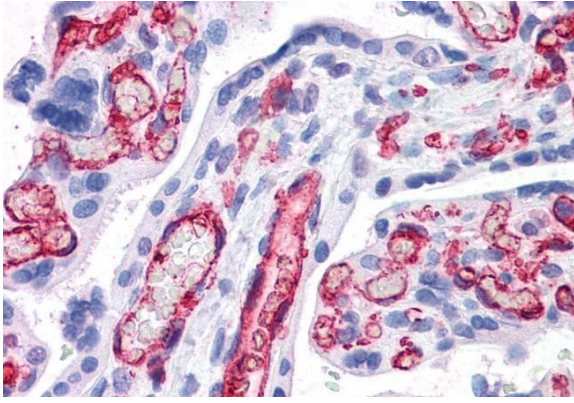
ARG63774 anti-CD32B antibody WB image

Western blot: K562 lysate (35 µg protein in RIPA buffer) stained with ARG63774 anti-CD32B antibody at 0.3 µg/ml dilution.



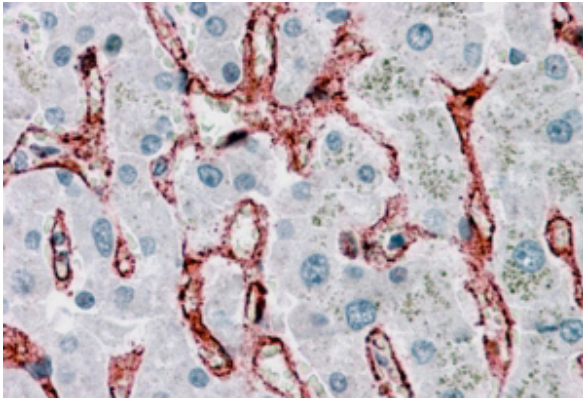
ARG63774 anti-CD32B antibody WB image

Western blot: 1). Mock transfection; 2) CD32 (RC211982) expressing plasmid transfected HEK293 cell lysate stained with ARG63774 anti-CD32B antibody.



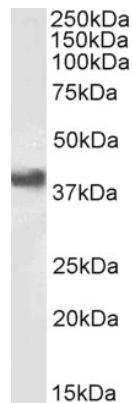
ARG63774 anti-CD32B antibody IHC-P image

Immunohistochemistry: Paraffin-embedded Human placenta tissue. Antigen Retrieval: Steam tissue section in Citrate buffer (pH 6.0). The tissue section was stained with ARG63774 anti-CD32B antibody at 3.75  $\mu\text{g}/\text{ml}$  dilution followed by AP-staining.



ARG63774 anti-CD32B antibody IHC-P image

Immunohistochemistry: Paraffin embedded Human Liver. (Steamed antigen retrieval with citrate buffer pH 6) stained with ARG63774 anti-CD32B antibody at 3.8  $\mu\text{g}/\text{ml}$  dilution followed by AP-staining.



ARG63774 anti-CD32B antibody WB image

Western blot: 35  $\mu\text{g}$  of Daudi cell lysate (in RIPA buffer) stained with ARG63774 anti-CD32B antibody at 1  $\mu\text{g}/\text{ml}$  dilution and incubated at RT for 1 hour.