

ARG63799 anti-LRP5 antibody

Package: 100 µg
Store at: -20°C

Summary

Product Description	Goat Polyclonal antibody recognizes LRP5
Tested Reactivity	Hu
Predict Reactivity	Ms, Rat
Tested Application	IHC-P, WB
Host	Goat
Clonality	Polyclonal
Isotype	IgG
Target Name	LRP5
Species	Human
Immunogen	C-ERVEKTTGDKRT
Conjugation	Un-conjugated
Alternate Names	HBM; LRP-5; LRP7; OPS; OPTA1; BMND1; LR3; VBCH2; OPPG; Low-density lipoprotein receptor-related protein 5; EVR4; EVR1

Application Instructions

Application table	Application	Dilution
	IHC-P	2 - 4 µg/ml
	WB	1 - 3 µg/ml
Application Note	WB: Recommend incubate at RT for 1h. IHC-P: Antigen Retrieval: Steam tissue section in Citrate buffer (pH 6.0). * The dilutions indicate recommended starting dilutions and the optimal dilutions or concentrations should be determined by the scientist.	

Properties

Form	Liquid
Purification	Purified from goat serum by antigen affinity chromatography.
Buffer	Tris saline (pH 7.3), 0.02% Sodium azide and 0.5% BSA.
Preservative	0.02% Sodium azide
Stabilizer	0.5% BSA
Concentration	0.5 mg/ml
Storage instruction	For continuous use, store undiluted antibody at 2-8°C for up to a week. For long-term storage, aliquot and store at -20°C or below. Storage in frost free freezers is not recommended. Avoid repeated freeze/thaw cycles. Suggest spin the vial prior to opening. The antibody solution should be gently mixed

before use.

Note

For laboratory research only, not for drug, diagnostic or other use.

Bioinformation

Database links

[GeneID: 4041 Human](#)

[Swiss-port # O75197 Human](#)

Background

This gene encodes a transmembrane low-density lipoprotein receptor that binds and internalizes ligands in the process of receptor-mediated endocytosis. This protein also acts as a co-receptor with Frizzled protein family members for transducing signals by Wnt proteins and was originally cloned on the basis of its association with type 1 diabetes mellitus in humans. This protein plays a key role in skeletal homeostasis and many bone density related diseases are caused by mutations in this gene. Mutations in this gene also cause familial exudative vitreoretinopathy. [provided by RefSeq, Nov 2009]

Research Area

Cell Biology and Cellular Response antibody; Developmental Biology antibody; Metabolism antibody; Neuroscience antibody; Signaling Transduction antibody

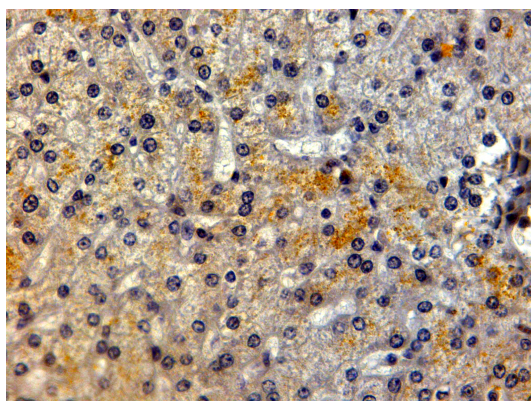
Calculated Mw

179 kDa

PTM

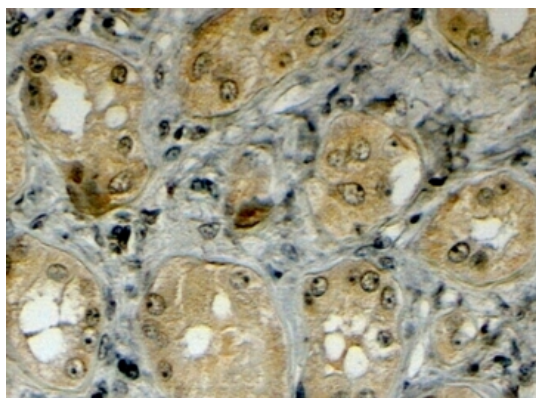
Phosphorylation of cytoplasmic PPPSP motifs regulates the signal transduction of the Wnt signaling pathway through acting as a docking site for AXIN1.

Images



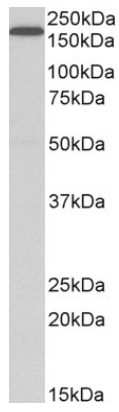
ARG63799 anti-LRP5 antibody IHC-P image

Immunohistochemistry: Paraffin-embedded Human liver tissue.
Antigen Retrieval: Steam tissue section in Citrate buffer (pH 6.0). The tissue section was stained with ARG63799 anti-LRP5 antibody at 2 µg/ml dilution followed by HRP-staining.



ARG63799 anti-LRP5 antibody IHC-P image

Immunohistochemistry: paraffin embedded Human Kidney.
(Steamed antigen retrieval with citrate buffer pH 6) stained with ARG63799 anti-LRP5 antibody at 4 µg/ml dilution followed by HRP-staining.



ARG63799 anti-LRP5 antibody WB image

Western blot: 35 µg of HepG2 cell lysate (in RIPA buffer) stained with ARG63799 anti-LRP5 antibody at 1 µg/ml dilution and incubated at RT for 1 hour.