

## ARG63801 anti-SH2D1A / SAP antibody

Package: 100 µg  
Store at: -20°C

### Summary

|                     |   |
|---------------------|---|
| Product Description | Goat Polyclonal antibody recognizes SH2D1A / SAP  |
| Tested Reactivity   | Hu  |
| Predict Reactivity  | Ms, Rat   |
| Tested Application  | IP, WB  |
| Host                | Goat  |
| Clonality           | Polyclonal  |
| Isotype             | IgG   |
| Target Name         | SH2D1A / SAP  |
| Species             | Human   |
| Immunogen           | C-HKRYFRKIKN  |
| Conjugation         | Un-conjugated   |
| Alternate Names     | SLAM-associated protein; T-cell signal transduction molecule SAP; IMD5; EBVS; Duncan disease SH2-protein; Signaling lymphocytic activation molecule-associated protein; SAP/SH2D1A; DSHP; SH2 domain-containing protein 1A; MTCP1; XLPD; LYP; XLPD1; SAP; XLP |

### Application Instructions

|                   |  |                   |
|-------------------|--|-------------------|
| Application table | Application  | Dilution          |
|                   | IP   | Assay - dependent |
|                   | WB   | 0.3 - 1 µg/ml     |
| Application Note  | WB: Recommend incubate at RT for 1h.<br>* The dilutions indicate recommended starting dilutions and the optimal dilutions or concentrations should be determined by the scientist. |                   |

### Properties

|                     |  |
|---------------------|--|
| Form                | Liquid   |
| Purification        | Purified from goat serum by antigen affinity chromatography.   |
| Buffer              | Tris saline (pH 7.3), 0.02% Sodium azide and 0.5% BSA.   |
| Preservative        | 0.02% Sodium azide   |
| Stabilizer          | 0.5% BSA   |
| Concentration       | 0.5 mg/ml  |
| Storage instruction | For continuous use, store undiluted antibody at 2-8°C for up to a week. For long-term storage, aliquot and store at -20°C or below. Storage in frost free freezers is not recommended. Avoid repeated freeze/thaw cycles. Suggest spin the vial prior to opening. The antibody solution should be gently mixed |

before use.

#### Note

For laboratory research only, not for drug, diagnostic or other use.

## Bioinformation

#### Database links

[GeneID: 4068 Human](#)

[Swiss-port # O60880 Human](#)

#### Background

This gene encodes a protein that plays a major role in the bidirectional stimulation of T and B cells. This protein contains an SH2 domain and a short tail. It associates with the signaling lymphocyte-activation molecule, thereby acting as an inhibitor of this transmembrane protein by blocking the recruitment of the SH2-domain-containing signal-transduction molecule SHP-2 to its docking site. This protein can also bind to other related surface molecules that are expressed on activated T, B and NK cells, thereby modifying signal transduction pathways in these cells. Mutations in this gene cause lymphoproliferative syndrome X-linked type 1 or Duncan disease, a rare immunodeficiency characterized by extreme susceptibility to infection with Epstein-Barr virus, with symptoms including severe mononucleosis and malignant lymphoma. Multiple transcript variants encoding different isoforms have been found for this gene. [provided by RefSeq, Jul 2008]

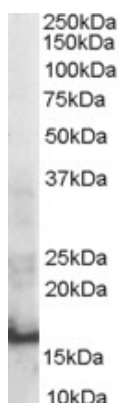
#### Research Area

Cell Biology and Cellular Response antibody; Immune System antibody

#### Calculated Mw

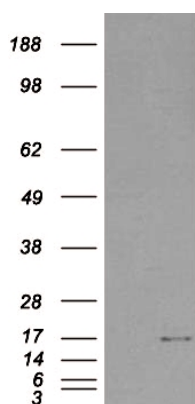
14 kDa

## Images



ARG63801 anti-SH2D1A / SAP antibody WB image

Western Blot: Human Thymus lysate (RIPA buffer, 30µg total protein per lane) stained with ARG63801 anti-SH2D1A / SAP antibody at 0.3 µg/ml dilution.



ARG63801 anti-SH2D1A / SAP antibody WB image

Western Blot: 1). Mock transfection; 2) SH2D1A (RC204723) expressing plasmid transfected HEK293 cell lysate stained with ARG63801 anti-SH2D1A / SAP antibody