

ARG63811 anti-RAE1 antibody

Package: 100 µg
Store at: -20°C

Summary

Product Description	Goat Polyclonal antibody recognizes RAE1
Tested Reactivity	Hu
Predict Reactivity	Ms, Rat, Cow, Dog, Pig
Tested Application	IHC-P, WB
Specificity	NP_003601and NP_001015885 represent identical proteins.
Host	Goat
Clonality	Polyclonal
Isotype	IgG
Target Name	RAE1
Species	Human
Immunogen	C-NAAEELKPRNKK
Conjugation	Un-conjugated
Alternate Names	MRNP41; dJ481F12.3; mRNA-associated protein mrnp 41; Mnrp41; MIG14; dJ800J21.1; Rae1 protein homolog; mRNA export factor

Application Instructions

Application table	Application	Dilution
	IHC-P	3 - 6 µg/ml
	WB	0.1 - 0.3 µg/ml
Application Note	WB: Recommend incubate at RT for 1h. IHC-P: Antigen Retrieval: Steam tissue section in Citrate buffer (pH 6.0). * The dilutions indicate recommended starting dilutions and the optimal dilutions or concentrations should be determined by the scientist.	

Properties

Form	Liquid
Purification	Purified from goat serum by antigen affinity chromatography.
Buffer	Tris saline (pH 7.3), 0.02% Sodium azide and 0.5% BSA.
Preservative	0.02% Sodium azide
Stabilizer	0.5% BSA
Concentration	0.5 mg/ml
Storage instruction	For continuous use, store undiluted antibody at 2-8°C for up to a week. For long-term storage, aliquot and store at -20°C or below. Storage in frost free freezers is not recommended. Avoid repeated

freeze/thaw cycles. Suggest spin the vial prior to opening. The antibody solution should be gently mixed before use.

Note

For laboratory research only, not for drug, diagnostic or other use.

Bioinformation

Database links

[GeneID: 8480 Human](#)

[Swiss-port # P78406 Human](#)

Background

Mutations in the *Schizosaccharomyces pombe* Rae1 and *Saccharomyces cerevisiae* Gle2 genes have been shown to result in accumulation of poly(A)-containing mRNA in the nucleus, suggesting that the encoded proteins are involved in RNA export. The protein encoded by this gene is a homolog of yeast Rae1. It contains four WD40 motifs, and has been shown to localize to distinct foci in the nucleoplasm, to the nuclear rim, and to meshwork-like structures throughout the cytoplasm. This gene is thought to be involved in nucleocytoplasmic transport, and in directly or indirectly attaching cytoplasmic mRNPs to the cytoskeleton. Alternatively spliced transcript variants encoding the same protein have been found for this gene. [provided by RefSeq, Jul 2008]

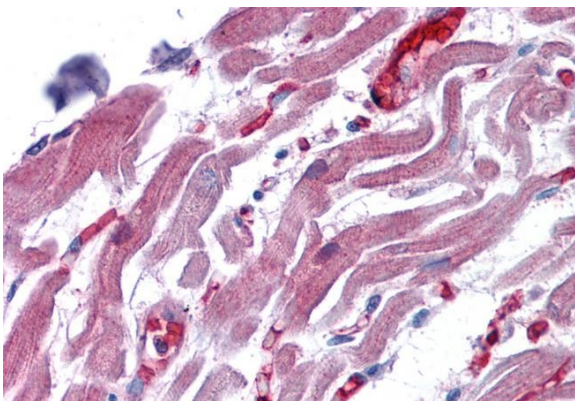
Research Area

Cell Biology and Cellular Response antibody; Controls and Markers antibody; Gene Regulation antibody; Signaling Transduction antibody

Calculated Mw

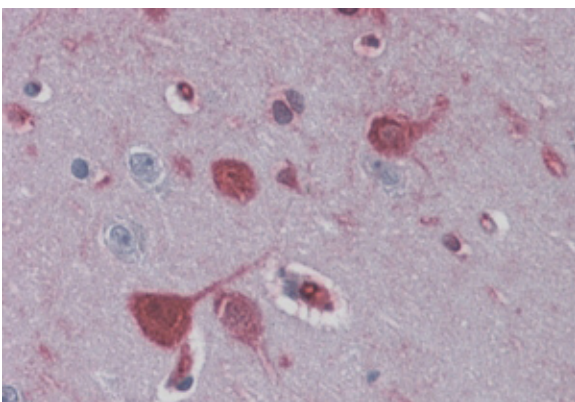
41 kDa

Images



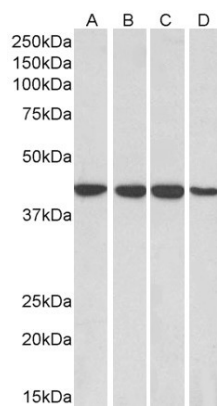
ARG63811 anti-RAE1 antibody IHC-P image

Immunohistochemistry: Paraffin-embedded Human heart tissue. Antigen Retrieval: Steam tissue section in Citrate buffer (pH 6.0). The tissue section was stained with ARG63811 anti-RAE1 antibody at 3.75 µg/ml dilution followed by AP-staining.



ARG63811 anti-RAE1 antibody IHC-P image

Immunohistochemistry: paraffin embedded Human Brain Cortex. (Steamed antigen retrieval with citrate buffer pH 6) stained with ARG63811 anti-RAE1 antibody at 3.8 µg/ml dilution followed by AP-staining.



ARG63811 anti-RAE1 antibody WB image

Western blot: 35 µg of HepG2 (A), HeLa (B), Jurkat (C) and MCF7 (D) lysates (in RIPA buffer) stained with ARG63811 anti-RAE1 antibody at 0.1 µg/ml dilution and incubated at RT for 1 hour.