

ARG63815 anti-TRPC6 antibody

Package: 100 µg
Store at: -20°C

Summary

Product Description	Goat Polyclonal antibody recognizes TRPC6
Tested Reactivity	Hu
Predict Reactivity	Cow, Dog, Pig
Tested Application	FACS, WB
Host	Goat
Clonality	Polyclonal
Isotype	IgG
Target Name	TRPC6
Species	Human
Immunogen	C-EKLSMEPNQEETN
Conjugation	Un-conjugated
Alternate Names	FSGS2; Transient receptor protein 6; TrpC6; Short transient receptor potential channel 6; TRP-6; TRP6

Application Instructions

Application table	Application	Dilution
	FACS	10 µg/ml
	WB	0.3 - 1 µg/ml
Application Note	WB: Recommend incubate at RT for 1h. * The dilutions indicate recommended starting dilutions and the optimal dilutions or concentrations should be determined by the scientist.	

Properties

Form	Liquid
Purification	Purified from goat serum by antigen affinity chromatography.
Buffer	Tris saline (pH 7.3), 0.02% Sodium azide and 0.5% BSA.
Preservative	0.02% Sodium azide
Stabilizer	0.5% BSA
Concentration	0.5 mg/ml
Storage instruction	For continuous use, store undiluted antibody at 2-8°C for up to a week. For long-term storage, aliquot and store at -20°C or below. Storage in frost free freezers is not recommended. Avoid repeated freeze/thaw cycles. Suggest spin the vial prior to opening. The antibody solution should be gently mixed before use.

Bioinformation

Database links [GeneID: 7225 Human](#)

[Swiss-port # Q9Y210 Human](#)

Background The protein encoded by this gene forms a receptor-activated calcium channel in the cell membrane. The channel is activated by diacylglycerol and is thought to be under the control of a phosphatidylinositol second messenger system. Activation of this channel occurs independently of protein kinase C and is not triggered by low levels of intracellular calcium. Defects in this gene are a cause of focal segmental glomerulosclerosis 2 (FSGS2). [provided by RefSeq, Mar 2009]

Research Area Signaling Transduction antibody

Calculated Mw 106 kDa

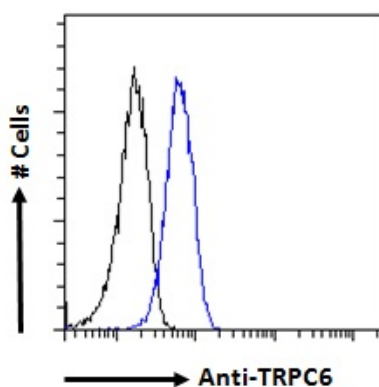
PTM Phosphorylated by FYN, leading to an increase of TRPC6 channel activity.

Images



ARG63815 anti-TRPC6 antibody WB image

Western blot: 35 µg of A549 cell lysate (in RIPA buffer) stained with ARG63815 anti-TRPC6 antibody at 1 µg/ml dilution and incubated at RT for 1 hour.



ARG63815 anti-TRPC6 antibody FACS image

Flow Cytometry: Paraformaldehyde-fixed A549 cells permeabilized with 0.5% Triton. Cells were stained with ARG63815 anti-TRPC6 antibody (blue line) at 10 µg/ml dilution for 1 hour, followed by incubation with Alexa FluorR 488 labelled secondary antibody. IgG control: Unimmunized goat IgG (black line).