

ARG63841 anti-CBX1 / HP1 beta antibody

Package: 100 µg
Store at: -20°C

Summary

Product Description	Goat Polyclonal antibody recognizes CBX1 / HP1 beta
Tested Reactivity	Hu
Predict Reactivity	Ms, Rat, Cow, Dog
Tested Application	IHC-P, WB
Specificity	Variants (NP_006798.1; NP_001120700.1) encode the same protein.
Host	Goat
Clonality	Polyclonal
Isotype	IgG
Target Name	CBX1 / HP1 beta
Species	Human
Immunogen	C-QSQKTAHETDKSE
Conjugation	Un-conjugated
Alternate Names	MOD1; Chromobox protein homolog 1; HP1 beta; M31; HP1Hs-beta; Modifier 1 protein; Heterochromatin protein p25; HP1-BETA; Heterochromatin protein 1 homolog beta; CBX; HP1Hsbeta; p25beta

Application Instructions

Application table	Application	Dilution
	IHC-P	2 - 3 µg/ml
	WB	0.3 - 1.0 µg/ml
Application Note	IHC-P: Antigen Retrieval: Steam tissue section in Citrate buffer (pH 6.0). WB: Recommend incubate at RT for 1h. * The dilutions indicate recommended starting dilutions and the optimal dilutions or concentrations should be determined by the scientist.	

Properties

Form	Liquid
Purification	Purified from goat serum by antigen affinity chromatography.
Buffer	Tris saline (pH 7.3), 0.02% Sodium azide and 0.5% BSA.
Preservative	0.02% Sodium azide
Stabilizer	0.5% BSA
Concentration	0.5 mg/ml

Storage instruction	For continuous use, store undiluted antibody at 2-8°C for up to a week. For long-term storage, aliquot and store at -20°C or below. Storage in frost free freezers is not recommended. Avoid repeated freeze/thaw cycles. Suggest spin the vial prior to opening. The antibody solution should be gently mixed before use.
Note	For laboratory research only, not for drug, diagnostic or other use.

Bioinformation

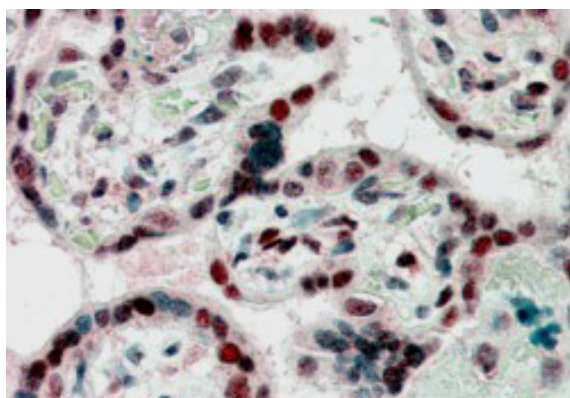
Database links	GeneID: 10951 Human Swiss-port # P83916 Human
Background	<p>This gene encodes a highly conserved nonhistone protein, which is a member of the heterochromatin protein family. The protein is enriched in the heterochromatin and associated with centromeres. The protein has a single N-terminal chromodomain which can bind to histone proteins via methylated lysine residues, and a C-terminal chromo shadow-domain (CSD) which is responsible for the homodimerization and interaction with a number of chromatin-associated nonhistone proteins. The protein may play an important role in the epigenetic control of chromatin structure and gene expression. Several related pseudogenes are located on chromosomes 1, 3, and X. Multiple alternatively spliced variants, encoding the same protein, have been identified. [provided by RefSeq, Jul 2008]</p>
Research Area	Gene Regulation antibody
Calculated Mw	21 kDa
PTM	Not phosphorylated. Ubiquitinated.

Images



ARG63841 anti-CBX1 / HP1 beta antibody WB image

Western blot: A431 lysate (35 µg protein in RIPA buffer) stained with ARG63841 anti-CBX1 / HP1 beta antibody at 0.3 µg/ml dilution.



ARG63841 anti-CBX1 / HP1 beta antibody IHC-P image

Immunohistochemistry: Paraffin embedded Human Placenta. (Steamed antigen retrieval with citrate buffer pH 6) stained with ARG63841 anti-CBX1 / HP1 beta antibody at 2.5 µg/ml dilution followed by AP-staining.