

ARG63842 anti-NHERF2 antibody

Package: 100 µg
Store at: -20°C

Summary

Product Description	Goat Polyclonal antibody recognizes NHERF2
Tested Reactivity	Hu
Tested Application	IHC-P, WB
Specificity	Please note that this variant has an extra insertion of 11 residues compared to NP_004776.3. The immunizing peptide represents this insertion.
Host	Goat
Clonality	Polyclonal
Isotype	IgG
Target Name	NHERF2
Species	Human
Immunogen	C-DGSAWKQDPFQ
Conjugation	Un-conjugated
Alternate Names	Tyrosine kinase activator protein 1; NHE3RF2; E3KARP; Na; +; OCTS2; NHERF-2; Solute carrier family 9 isoform A3 regulatory factor 2; Sodium-hydrogen exchanger regulatory factor 2; NHE3 kinase A regulatory protein E3KARP; NHERF2; SIP-1; SIP1; TKA-1; SRY-interacting protein 1

Application Instructions

Application table	Application	Dilution
	IHC-P	1 - 2 µg/ml
	WB	0.3 - 1 µg/ml
Application Note	IHC-P: Antigen Retrieval: Microwaved tissue section in Tris/EDTA buffer (pH 9.0). WB: Recommend incubate at RT for 1h. * The dilutions indicate recommended starting dilutions and the optimal dilutions or concentrations should be determined by the scientist.	

Properties

Form	Liquid
Purification	Purified from goat serum by antigen affinity chromatography.
Buffer	Tris saline (pH 7.3), 0.02% Sodium azide and 0.5% BSA.
Preservative	0.02% Sodium azide
Stabilizer	0.5% BSA
Concentration	0.5 mg/ml
Storage instruction	For continuous use, store undiluted antibody at 2-8°C for up to a week. For long-term storage, aliquot

and store at -20°C or below. Storage in frost free freezers is not recommended. Avoid repeated freeze/thaw cycles. Suggest spin the vial prior to opening. The antibody solution should be gently mixed before use.

Note

For laboratory research only, not for drug, diagnostic or other use.

Bioinformation

Database links

[GeneID: 9351 Human](#)

[Swiss-port # Q15599 Human](#)

Background

This gene encodes a member of the NHERF family of PDZ scaffolding proteins. These proteins mediate many cellular processes by binding to and regulating the membrane expression and protein-protein interactions of membrane receptors and transport proteins. The encoded protein plays a role in intestinal sodium absorption by regulating the activity of the sodium/hydrogen exchanger 3, and may also regulate the cystic fibrosis transmembrane regulator (CFTR) ion channel. Alternatively spliced transcript variants encoding multiple isoforms have been observed for this gene. [provided by RefSeq, Nov 2011]

Research Area

Signaling Transduction antibody

Calculated Mw

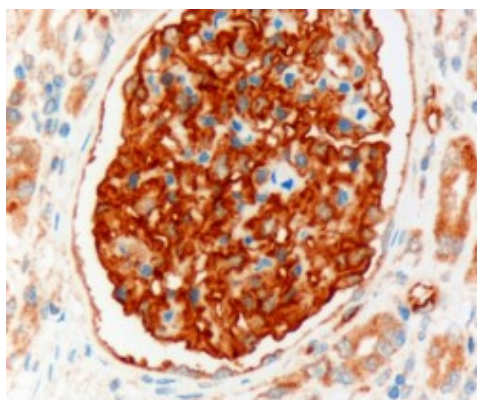
37 kDa

Images



ARG63842 anti-NHERF2 antibody WB image

Western Blot: human kidney lysate (35 µg protein in RIPA buffer) stained with ARG63842 anti-NHERF2 (isoform a) antibody at 0.3 µg/ml dilution.



ARG63842 anti-NHERF2 antibody IHC-P image

Immunohistochemistry: paraffin embedded Human Kidney. (Microwaved antigen retrieval with Tris/EDTA buffer pH9) stained with ARG63842 anti-NHERF2 (isoform a) antibody at 3 µg/ml dilution followed by HRP-staining.